

COPY

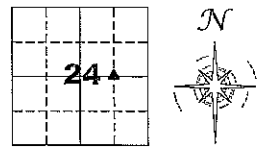
Jones County Marie Krutzfield Recorder
 Fee Book 2011 2242
 09/02/2011 @0255PM # Pages 1
 ZSC SEC COR CERT
 Total Fees: \$0.00

PREPARED BY
 CLARENCE J. WALTON, JONES COUNTY ENGINEER'S OFFICE, 19501 HWY. 64, ANAMOSA, IOWA, 52205 (319) 462-3785

UNITED STATES PUBLIC LAND
 SURVEY CORNER CERTIFICATE
 LAND SURVEY MONUMENTS SITUATED IN SECTION 24, TOWNSHIP 84 NORTH,
 RANGE 2 WEST OF THE 5TH PRINCIPAL MERIDIAN, JONES COUNTY, IOWA.

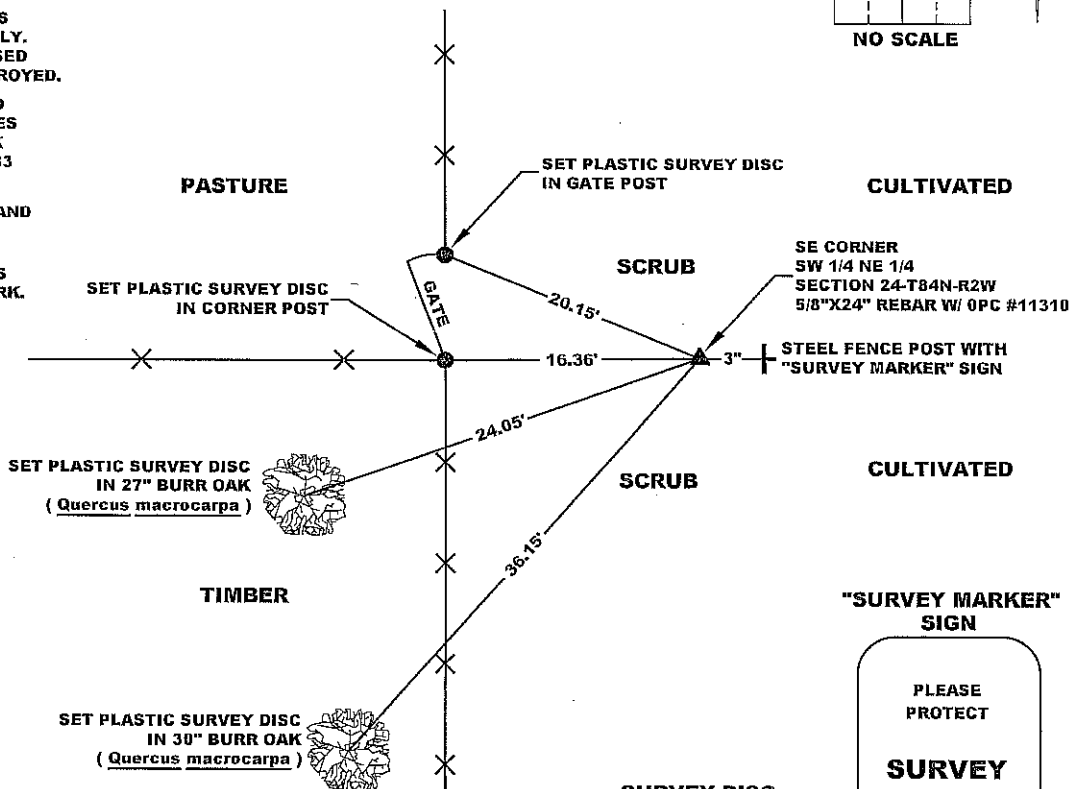
STATE PLANE COORDINATE
 NAD 83 IOWA NORTH
 N 3498550.75
 E 5594630.65

CORNER SECTION TOWNSHIP RANGE
 SE CORNER 24 T84N R2W
 SW 1/4 NE 1/4



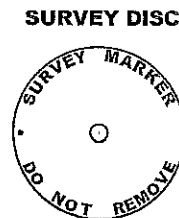
NOTES:

- 1) THE STATE PLANE COORDINATES AS SHOWN ARE FOR CONVENIENCE ONLY. THE TIES AS SHOWN SHOULD BE USED TO REPLACE THE CORNER, IF DESTROYED.
- 2) COORDINATES AS SHOWN ARE GRID COORDINATES AND BASED ON JONES COUNTY G.P.S. CONTROL NETWORK WHICH IN TURN IS BASED ON NAD 83 IOWA NORTH DATUM.
- 3) ALL MEASUREMENTS ARE IN FEET AND DECIMALS THEREOF.
- 4) * GRID DISTANCE, BASED ON JONES COUNTY G.P.S. CONTROL NETWORK.



LEGEND

- OPC ORANGE PLASTIC CAP
- () RECORDED AS

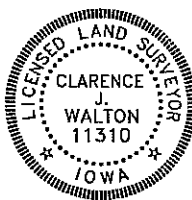


PLEASE PROTECT
SURVEY MARKER
 IF LOCATION OF THIS MARK IS ENDANGERED PLEASE CONTACT JONES COUNTY ENGINEER'S OFFICE 319-462-3785

PREVIOUSLY RECORDED IN N/A

MONUMENT DESCRIPTION AND HOW ESTABLISHED SET 5/8"X24" REBAR W/ ORANGE PLASTIC CAP #11310 3" ABOVE PRESENT GROUND SURFACE ON LINE AND EQUIDISTANT BETWEEN THE CENTER OF SECTION 24-T84N-R2W (REFER TO TIES RECORDED IN RECORDER'S DOCUMENT 2008 2263) AND THE E 1/4 CORNER OF SAID SECTION 24 (REFER TO TIES RECORDED IN RECORDER'S DOCUMENT 2005 2259). SET STEEL FENCE POST WITH "SURVEY MARKER" SIGN FACING WEST AND BEING 3" EAST OF THE REBAR AS A WITNESS.

FIELD BOOK 375, PAGE 151. DATE OF SURVEY: 8/31/11



I hereby certify that this land surveying document and the related survey work was performed by me or under my direct personal supervision and that I am a duly registered Land Surveyor under the laws of the State of Iowa.
 Signed: *Clarence J. Walton* 9/2/11
 Clarence J. Walton, L.S.
 My Registration Renewal Date is December 31, 2011
 Iowa License Number 11310
 Pages or sheets covered by this seal: 1 of 1.

- A. THERE IS NO CERTIFICATE FOR THE CORNER ON FILE WITH THE RECORDER OF THE COUNTY IN WHICH THE CORNER IS LOCATED.
- B. THE CORNER MONUMENT HAS BEEN REPLACED OR MODIFIED.
- C. THE SURVEYOR IN RESPONSIBLE CHARGE OF THE LAND SURVEYING ACCEPTS A CORNER POSITION THAT DIFFERS FROM THAT SHOWN IN THE PUBLIC RECORDS OF THE COUNTY IN WHICH THE CORNER IS LOCATED.
- D. THE REFERENCE TIES REFERRED TO IN AN EXISTING PUBLIC RECORD NO LONGER EXIST.
- E. EXISTING CORNER TIES UPDATED.

CORNERS TO BE INDEXED

CORNER	SECTION	TOWNSHIP	RANGE
SE CORNER	24	84N	2W
SW 1/4 NE 1/4	24	84N	2W
SW CORNER	24	84N	2W
SE 1/4 NE 1/4	24	84N	2W
NW CORNER	24	84N	2W
NE 1/4 SE 1/4	24	84N	2W
NE CORNER	24	84N	2W
NW 1/4 SE 1/4	24	84N	2W

JONES COUNTY ENGINEER'S OFFICE



19501 HWY. 64, ANAMOSA, IOWA 52205
 (319) 462-3785