

2005 2259

FILED  
RECORDERS OFFICE  
JONES COUNTY IOWA

05 JUN 29 AM 9:59

MARIE KRUTZFIELD  
RECORDER *No Fee*

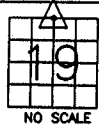
J.D. Tjepkes, LS. JONES COUNTY ENGINEER'S OFFICE, 19501 HWY. 64, ANAMOSA, IOWA, 52205 (319)462-3785

# UNITED STATES PUBLIC LAND SURVEY CORNER CERTIFICATE

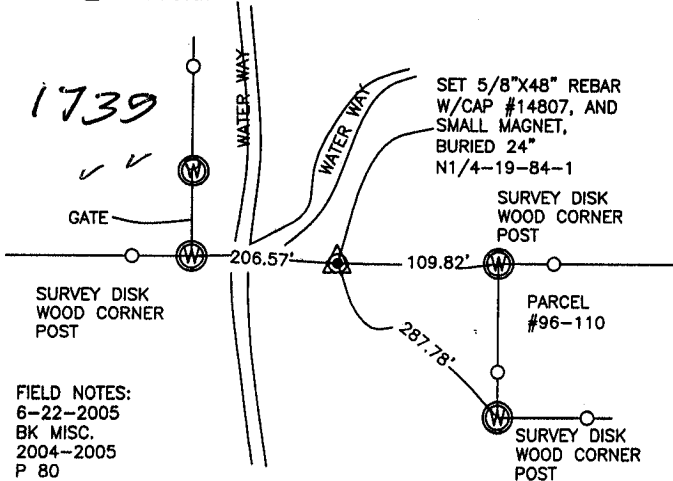
LAND SURVEY MONUMENTS SITUATED IN SECTION 19, TOWNSHIP 84  
NORTH, RANGE 1 WEST OF THE 5TH P.M., JONES COUNTY, IOWA

### CORNERS TO BE INDEXED

CORNER SECTION TOWNSHIP RANGE  
N1/4 19 84N 1W



OFFICE FILE NO.  
84119c\_062805.tif



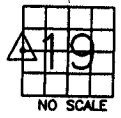
FIELD NOTES:  
6-22-2005  
BK MISC.  
2004-2005  
P 80

PREVIOUSLY RECORDED IN BOOK NA, PAGE NA  
MONUMENT DESCRIPTION AND HOW ESTABLISHED

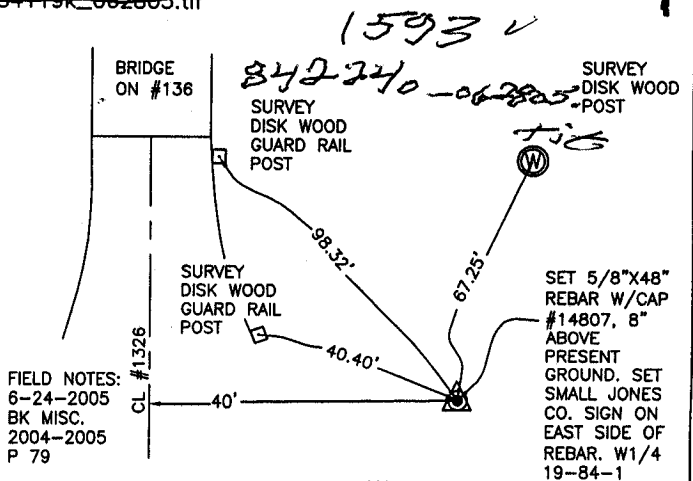
PER PARCEL #96-110, BY LS DILLON (6581) RECORDED IN JONES COUNTY  
RECORDER'S OFFICE IN BOOK "M" P 29, RESET 5/8"X48" REBAR W/CAP  
#14807 AND MAGNET BURIED 24" IN CULTIVATED FIELD. TIES AS INDICATED  
FOR N1/4 SECTION 19 T84N R1W.

### CORNERS TO BE INDEXED

CORNER SECTION TOWNSHIP RANGE  
W1/4 19 84N 1W



OFFICE FILE NO.  
84119k\_062805.tif



FIELD NOTES:  
6-24-2005  
BK MISC.  
2004-2005  
P 79

PREVIOUSLY RECORDED IN BOOK NA, PAGE NA  
MONUMENT DESCRIPTION AND HOW ESTABLISHED

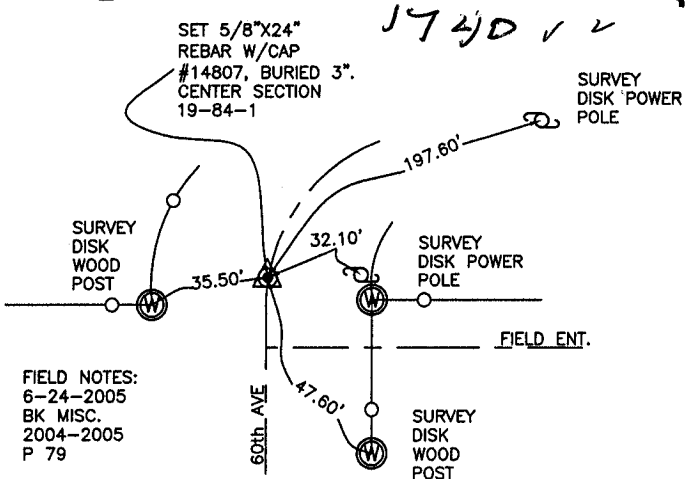
PER TIES ON FILE AT JONES CO. ENGINEER'S OFFICE FROM I.D.O.T. PROJECT  
#FN-814 (DATED 1951), FOUND R.R. RAIL BURIED 40" IN FORESLOPE OF  
#136. SET 5/8"X48" REBAR W/CAP #14807, 8" ABOVE PRESENT GROUND.  
NEW TIES AS INDICATED FOR W1/4 SECTION 19 T84N R1W.

### CORNERS TO BE INDEXED

CORNER SECTION TOWNSHIP RANGE  
CENTER 19 84N 1W



OFFICE FILE NO.  
84119m\_062805.tif



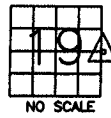
FIELD NOTES:  
6-24-2005  
BK MISC.  
2004-2005  
P 79

PREVIOUSLY RECORDED IN BOOK NA, PAGE NA  
MONUMENT DESCRIPTION AND HOW ESTABLISHED

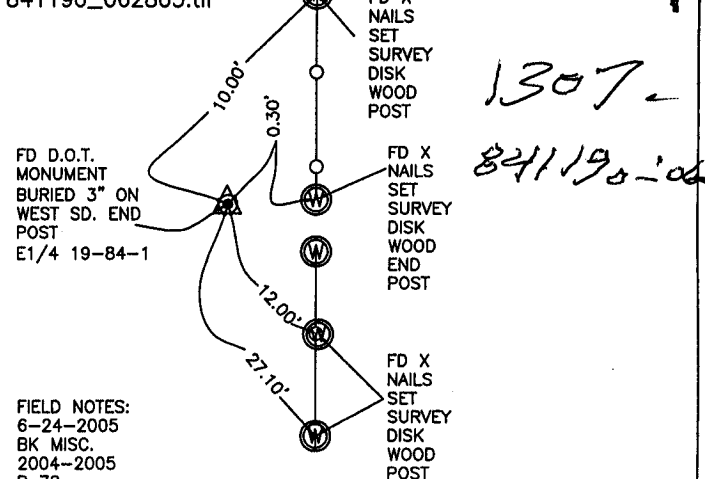
SET 5/8"X24" REBAR, BURIED 3", ON EAST-WEST CENTER LINE  
SECTION 19 AND CENTERLINE ROAD SPLIT NORTH-SOUTH PER  
ROAD RECORD. TIES AS INDICATED FOR CENTER SECTION 19  
T84N R1W.

### CORNERS TO BE INDEXED

CORNER SECTION TOWNSHIP RANGE  
E1/4 19 84N 1W



OFFICE FILE NO.  
84119o\_062805.tif



FIELD NOTES:  
6-24-2005  
BK MISC.  
2004-2005  
P 78

PREVIOUSLY RECORDED IN BOOK NA, PAGE NA  
MONUMENT DESCRIPTION AND HOW ESTABLISHED

PER OLD TIES ON FILE AT JONES COUNTY ENGINEER'S OFFICE, FROM I.D.O.T.  
PROJECT # F-64(8)--20-53, FOUND DOT MONUMENT BURIED 3" ON WEST  
SIDE OF END POST. TIES AS INDICATED FOR E1/4 SECTION 19 T84N R1W.

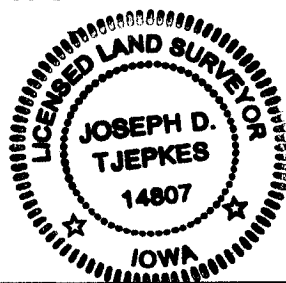
I hereby declare that this plat, survey or report  
was made by me or under my direct personal  
supervision and that I am a duly registered Land  
Surveyor under the laws of the State of Iowa.

Signed:

*Joseph D. Tjepkes* 6.28.05

Joseph D. Tjepkes L.S. Iowa Reg. No. 14807  
My Registration Renewal Date is December 31, 2006

SEAL



J.D. Tjepkes LS 14807  
JONES COUNTY  
ENGINEER'S OFFICE

19501 HWY. 64,  
ANAMOSA, IOWA,  
52205 (319)462-3785

# THIS IS NOT A CERTIFICATION

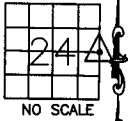
JONES COUNTY ENGINEER'S OFFICE, 19501 HWY. 64, ANAMOSA, IOWA, 52205 (319)462-3785

## UNITED STATES PUBLIC LAND SURVEY CORNER CERTIFICATE

LAND SURVEY MONUMENTS SITUATED IN SECTION 24, TOWNSHIP 84  
NORTH, RANGE 2 WEST OF THE 5TH P.M., JONES COUNTY, IOWA

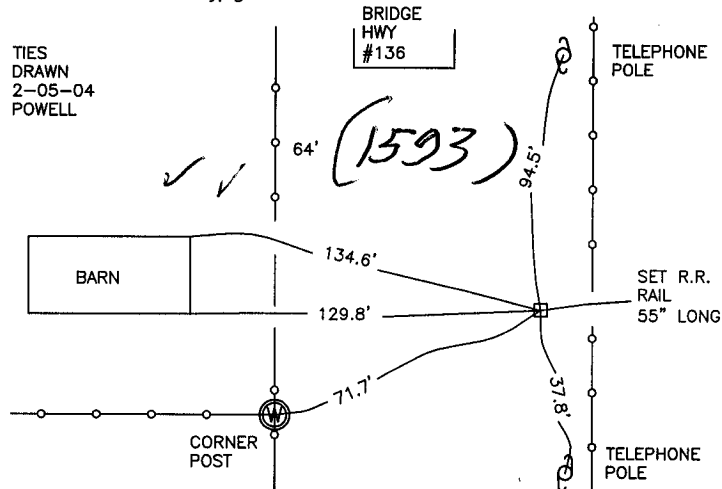
**CORNERS TO BE INDEXED**

CORNER	SECTION	TOWNSHIP	RANGE
E1/4	24	84N	2W



OFFICE FILE NO.

84224o\_020504.jpg

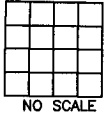


PREVIOUSLY RECORDED IN BOOK \_\_\_\_\_, PAGE \_\_\_\_\_  
MONUMENT DESCRIPTION AND HOW ESTABLISHED \_\_\_\_\_

TIES ON RECORD IN JONES CO. ENGINEER'S OFFICE, REF:  
JONES CO. PROJ. FN-814, IDOT, DATED 1951

**CORNERS TO BE INDEXED**

CORNER	SECTION	TOWNSHIP	RANGE
--------	---------	----------	-------

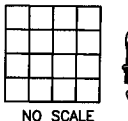


OFFICE FILE NO.

PREVIOUSLY RECORDED IN BOOK \_\_\_\_\_, PAGE \_\_\_\_\_  
MONUMENT DESCRIPTION AND HOW ESTABLISHED \_\_\_\_\_

**CORNERS TO BE INDEXED**

CORNER	SECTION	TOWNSHIP	RANGE
--------	---------	----------	-------

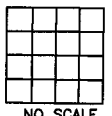


OFFICE FILE NO.

PREVIOUSLY RECORDED IN BOOK \_\_\_\_\_, PAGE \_\_\_\_\_  
MONUMENT DESCRIPTION AND HOW ESTABLISHED \_\_\_\_\_

**CORNERS TO BE INDEXED**

CORNER	SECTION	TOWNSHIP	RANGE
--------	---------	----------	-------



OFFICE FILE NO.

PREVIOUSLY RECORDED IN BOOK \_\_\_\_\_, PAGE \_\_\_\_\_  
MONUMENT DESCRIPTION AND HOW ESTABLISHED \_\_\_\_\_

~~I hereby declare that this plat, survey or report was made by me or under my direct personal supervision and that I am a duly registered Land Surveyor under the laws of the State of Iowa.~~

Signed: \_\_\_\_\_

SEAL

JONES COUNTY  
ENGINEER'S OFFICE

19501 HWY. 64,  
ANAMOSA, IOWA,  
52205 (319)462-3785

*R*