

COPY

Jones County Marie Krutzfield Recorder  
 Fee Book 2011 2243  
 09/02/2011 @0257PM # Pages 1  
 ZSC SEC COR CERT  
 Total Fees: \$0.00

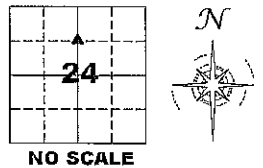
PREPARED BY  
 CLARENCE J. WALTON, JONES COUNTY ENGINEER'S OFFICE, 19501 HWY. 64, ANAMOSA, IOWA, 52205 (319) 462-3785

# UNITED STATES PUBLIC LAND SURVEY CORNER CERTIFICATE

LAND SURVEY MONUMENTS SITUATED IN SECTION 24, TOWNSHIP 84 NORTH,  
 RANGE 2 WEST OF THE 5TH PRINCIPAL MERIDIAN, JONES COUNTY, IOWA.

STATE PLANE COORDINATE  
 NAD 83 IOWA NORTH  
 N 3499838.23  
 E 5593266.10

CORNER SECTION TOWNSHIP RANGE  
 NW CORNER 24 T84N R2W  
 SW 1/4 NE 1/4

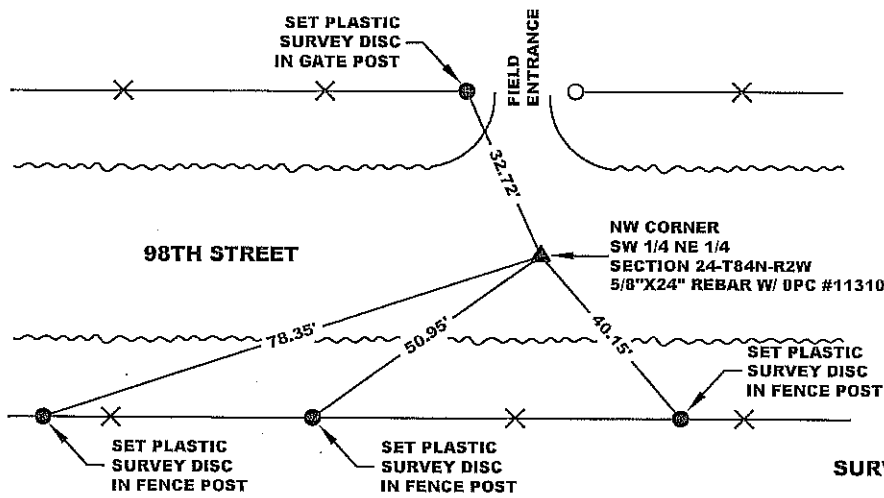


NO SCALE

NOTES:

- 1) THE STATE PLANE COORDINATES AS SHOWN ARE FOR CONVENIENCE ONLY. THE TIES AS SHOWN SHOULD BE USED TO REPLACE THE CORNER, IF DESTROYED.
- 2) COORDINATES AS SHOWN ARE GRID COORDINATES AND BASED ON JONES COUNTY G.P.S. CONTROL NETWORK WHICH IN TURN IS BASED ON NAD 83 IOWA NORTH DATUM.
- 3) ALL MEASUREMENTS ARE IN FEET AND DECIMALS THEREOF.
- 4) \* GRID DISTANCE, BASED ON JONES COUNTY G.P.S. CONTROL NETWORK.

CULTIVATED



"SURVEY MARKER" SIGN

PLEASE PROTECT

**SURVEY MARKER**

IF LOCATION OF THIS MARK IS ENDANGERED PLEASE CONTACT JONES COUNTY ENGINEER'S OFFICE 319-462-3785

SURVEY DISC



LEGEND

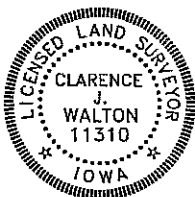
- OPC ORANGE PLASTIC CAP
- ( ) RECORDED AS

PASTURE

PREVIOUSLY RECORDED IN N/A

MONUMENT DESCRIPTION AND HOW ESTABLISHED SET 5/8"X24" REBAR W/ ORANGE PLASTIC CAP #11310 8" BELOW PRESENT ROAD SURFACE ON LINE AND EQUIDISTANT BETWEEN THE CENTER OF SECTION 24-T84N-R2W (REFER TO TIES RECORDED IN RECORDER'S DOCUMENT 2008 2263) AND THE N1/4 CORNER OF SAID SECTION 24 (Ibid.).

FIELD BOOK 375, PAGE 150. DATE OF SURVEY: 8/31/11



I hereby certify that this land surveying document and the related survey work was performed by me or under my direct personal supervision and that I am a duly registered Land Surveyor under the laws of the State of Iowa.

Signed: *Clarence J. Walton* 9/2/11  
 Clarence J. Walton, L.S.  
 My Registration Renewal Date is December 31, 2011  
 Iowa License Number 11310  
 Pages or sheets covered by this seal: 1 of 1.

- A. THERE IS NO CERTIFICATE FOR THE CORNER ON FILE WITH THE RECORDER OF THE COUNTY IN WHICH THE CORNER IS LOCATED.
- B. THE CORNER MONUMENT HAS BEEN REPLACED OR MODIFIED.
- C. THE SURVEYOR IN RESPONSIBLE CHARGE OF THE LAND SURVEYING ACCEPTS A CORNER POSITION THAT DIFFERS FROM THAT SHOWN IN THE PUBLIC RECORDS OF THE COUNTY IN WHICH THE CORNER IS LOCATED.
- D. THE REFERENCE TIES REFERRED TO IN AN EXISTING PUBLIC RECORD NO LONGER EXIST.
- E. EXISTING CORNER TIES UPDATED.

CORNERS TO BE INDEXED

CORNER	SECTION	TOWNSHIP	RANGE
NW CORNER	24	84N	2W
SW 1/4 NE 1/4	24	84N	2W
NE CORNER	24	84N	2W
SE 1/4 NW 1/4	24	84N	2W
SE CORNER	24	84N	2W
NE 1/4 NW 1/4	24	84N	2W
SW CORNER	24	84N	2W
NW 1/4 SE 1/4	24	84N	2W

JONES COUNTY ENGINEER'S OFFICE



19501 HWY. 64, ANAMOSA, IOWA 52205  
 (319) 462-3785