

Marie Krutzfield, Recorder  
 Jones County, Iowa

PREPARED BY  
 CLARENCE J. WALTON, JONES COUNTY ENGINEER'S OFFICE, 19501 HWY. 64, ANAMOSA, IOWA, 52205 (319) 462-3785

# UNITED STATES PUBLIC LAND SURVEY CORNER CERTIFICATE

LAND SURVEY MONUMENTS SITUATED IN SECTION 24, TOWNSHIP 84 NORTH,  
 RANGE 2 WEST OF THE 5TH PRINCIPAL MERIDIAN, JONES COUNTY, IOWA.

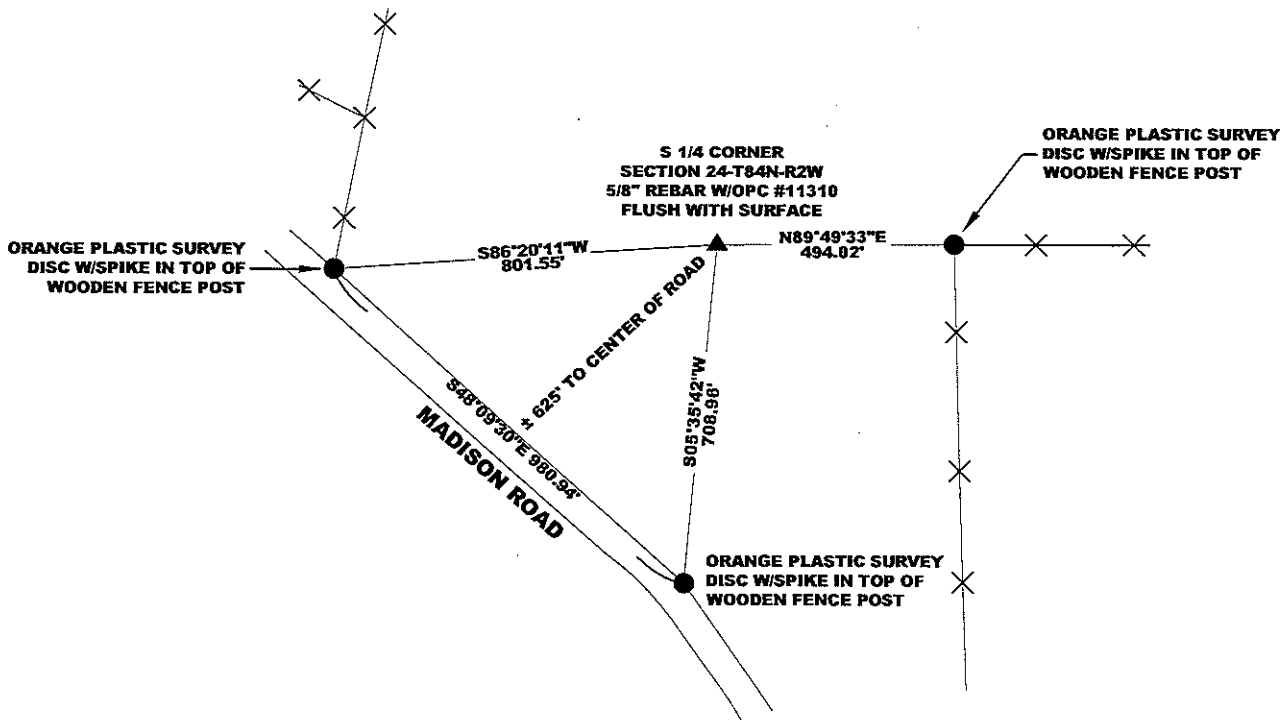
CORNER SECTION TOWNSHIP RANGE  
 S 1/4 24 84N 2W



**OFFICE FILE NO.**

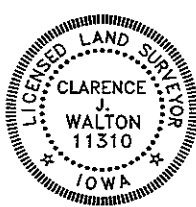
STATE PLANE COORDINATE  
 NAD 83 IOWA NORTH  
 N 3495885.08  
 E 5593386.79

NOTE:  
 THE STATE PLANE COORDINATE AS  
 INDICATED IS FOR CONVENIENCE ONLY.  
 THE TIES AS SHOWN SHOULD BE USED TO  
 REPLACE THE CORNER, IF DESTROYED



OPC - ORANGE PLASTIC CAP  
 ( ) - RECORDED AS

PREVIOUSLY RECORDED IN BOOK N/A, PAGE N/A  
 MONUMENT DESCRIPTION AND HOW ESTABLISHED OLD SURVEY RECORDED IN SURVEYOR'S RECORD (OLDEST RECORD BOOK) IN THE JONES COUNTY RECORDER'S OFFICE ON PAGE 205 INDICATES THAT A STONE MONUMENTED THIS CORNER. PROBED AREA BUT FOUND NOTHING. NO OTHER EVIDENCE OF CORNER'S LOCATION FOUND. SET 5/8" REBAR W/ORANGE PLASTIC CAP ON LINE AND EQUIDISTANT FROM FOUND SW CORNER AND FOUND SE CORNER OF SECTION 24-T84N-R2W. SET WITNESS POST USING A STEEL POST WITH YELLOW "JONES COUNTY" SIGN.



I hereby certify that this land surveying document and the related survey work was performed by me or under my direct personal supervision and that I am a duly registered Land Surveyor under the laws of the State of Iowa.

Signed: *Clarence J. Walton* 7/30/08  
 Clarence J. Walton, L.S.  
 My Registration Renewal Date is December 31, 2009  
 Iowa License Number 11310  
 Pages or sheets covered by this seal: 1 of 1.

- A. THERE IS NO CERTIFICATE FOR THE CORNER ON FILE WITH THE RECORDER OF THE COUNTY IN WHICH THE CORNER IS LOCATED.
- B. THE CORNER MONUMENT HAS BEEN REPLACED OR MODIFIED.
- C. THE SURVEYOR IN RESPONSIBLE CHARGE OF THE LAND SURVEYING ACCEPTS A CORNER POSITION THAT DIFFERS FROM THAT SHOWN IN THE PUBLIC RECORDS OF THE COUNTY IN WHICH THE CORNER IS LOCATED.
- D. THE REFERENCE TIES REFERRED TO IN AN EXISTING PUBLIC RECORD NO LONGER EXIST.

**CORNERS TO BE INDEXED**

CORNER	SECTION	TOWNSHIP	RANGE
S 1/4 CORNER	24	84N	2W
N 1/4 CORNER	25	84N	2W

**JONES COUNTY ENGINEER'S OFFICE**



19501 HWY. 64, ANAMOSA, IOWA 52205  
 (319) 462-3785