

2006 2041

FILED
RECORDERS OFFICE
JONES COUNTY IOWA

06 MAY 30 AM 8:06

MARKIE KRUTZFIELD
RECORDER 7.00 PM

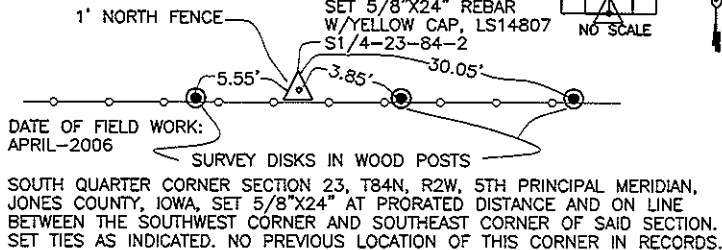
J.D. TJEPKES LS, 23428 RIDGE RD. ANAMOSA, IOWA, 52205 (319)462-6067

UNITED STATES PUBLIC LAND SURVEY CORNER CERTIFICATE

LAND SURVEY MONUMENTS SITUATED IN SECTION 23, TOWNSHIP 84
NORTH, RANGE 2 WEST OF THE 5TH P.M., JONES COUNTY, IOWA

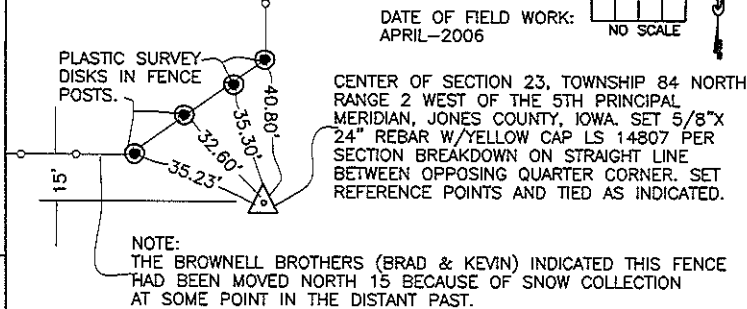
CORNERS TO BE INDEXED

CORNER	SECTION	TOWNSHIP	RANGE
S1/4	23	84N	2W

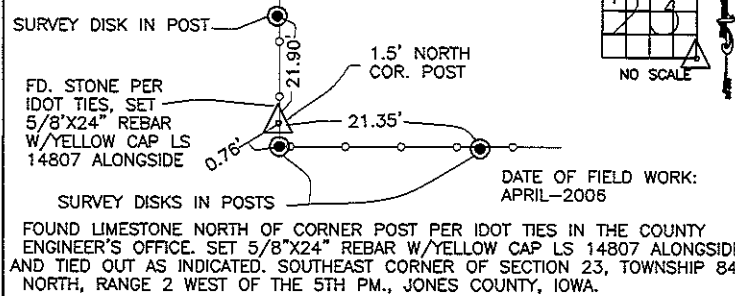


CORNERS TO BE INDEXED

CORNER	SECTION	TOWNSHIP	RANGE
CENTER	23	84N	2W

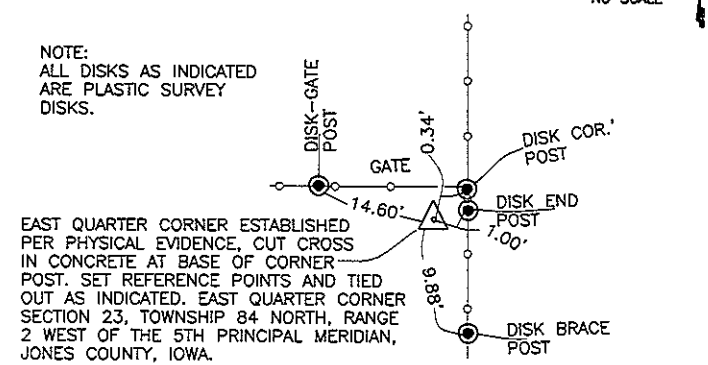


CORNER	SECTION	TOWNSHIP	RANGE
SE	23	84N	2W



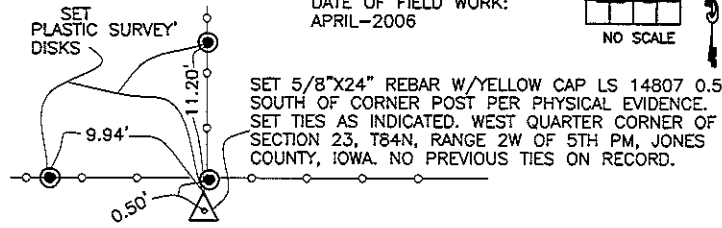
CORNERS TO BE INDEXED

CORNER	SECTION	TOWNSHIP	RANGE
E1/4	23	84N	2W



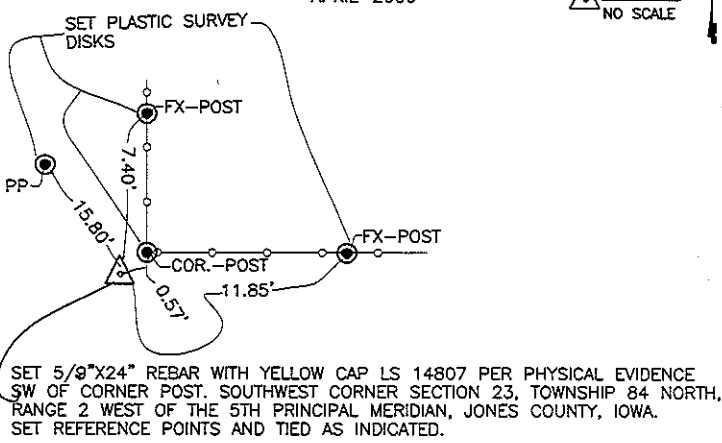
CORNERS TO BE INDEXED

CORNER	SECTION	TOWNSHIP	RANGE
W1/4	23	84N	2W



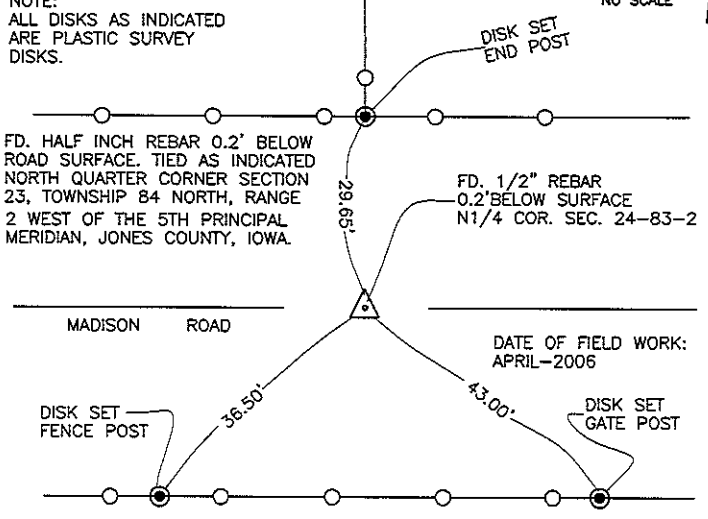
CORNERS TO BE INDEXED

CORNER	SECTION	TOWNSHIP	RANGE
SW	23	84N	2W



CORNERS TO BE INDEXED

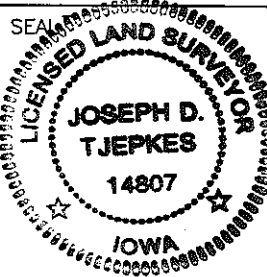
CORNER	SECTION	TOWNSHIP	RANGE
N1/4	23	84N	2W



I hereby declare that this plat, survey or report was made by me or under my direct personal supervision and that I am a duly registered Land Surveyor under the laws of the State of Iowa.

Signed: *[Signature]* 5-29-06

Joseph D. Tjepkes L.S. Iowa Reg. No. 14807
My Registration Renewal Date is December 31, 2006



J.D. TJEPKES LS 14807
23428 RIDGE ROAD
ANAMOSA, IOWA 52205

THIS IS NOT A CERTIFICATION

JONES COUNTY ENGINEER'S OFFICE, 19501 HWY. 64, ANAMOSA, IOWA, 52205 (319)462-3785

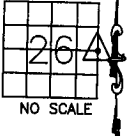
UNITED STATES PUBLIC LAND SURVEY CORNER CERTIFICATE

LAND SURVEY MONUMENTS SITUATED IN SECTION 26, TOWNSHIP 84
NORTH, RANGE 2 WEST OF THE 5TH P.M., JONES COUNTY, IOWA

CORNERS TO BE INDEXED

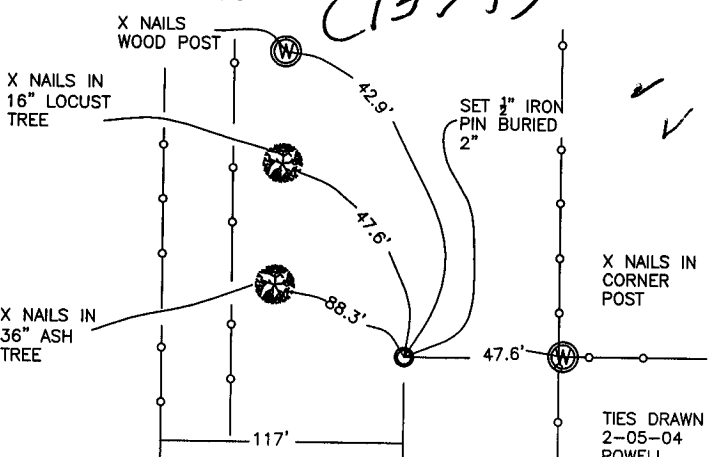
CORNER E1/4	SECTION 26	TOWNSHIP 84N	RANGE 2W
----------------	---------------	-----------------	-------------

OFFICE FILE NO. 84226o_020504.jpg



NO SCALE

(1594)

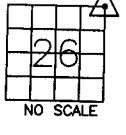


PREVIOUSLY RECORDED IN BOOK _____, PAGE _____
MONUMENT DESCRIPTION AND HOW ESTABLISHED _____
TIES ON RECORD IN JONES CO. ENGINEER'S OFFICE, REF:
PROJECT # F-641(3) IDOT, FOUND 3"X9"16" LIMESTONE 4"
DEEP. SET 1/2" IRON PIN BESIDE STONE BURIED 2". DATED
7-22-76

CORNERS TO BE INDEXED

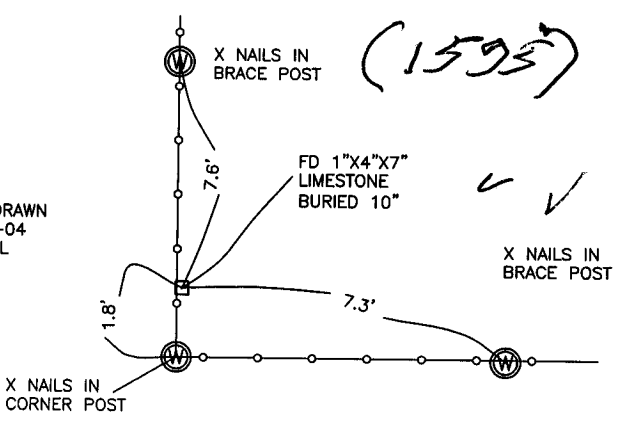
CORNER NE	SECTION 26	TOWNSHIP 84N	RANGE 2W
--------------	---------------	-----------------	-------------

OFFICE FILE NO. 84226e_020504.jpg



NO SCALE

(1595)

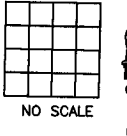


PREVIOUSLY RECORDED IN BOOK _____, PAGE _____
MONUMENT DESCRIPTION AND HOW ESTABLISHED _____
TIES ON RECORD IN JONES CO. ENGINEER'S OFFICE, REF: TO
PROJECT #F-64-1(3)--20-53, IDOT. FOUND 1"X4"X7"
LIMESTONE BURIED 10". DATED 7-23-76

CORNERS TO BE INDEXED

CORNER	SECTION	TOWNSHIP	RANGE
--------	---------	----------	-------

OFFICE FILE NO. _____



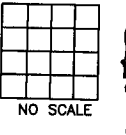
NO SCALE

PREVIOUSLY RECORDED IN BOOK _____, PAGE _____
MONUMENT DESCRIPTION AND HOW ESTABLISHED _____

CORNERS TO BE INDEXED

CORNER	SECTION	TOWNSHIP	RANGE
--------	---------	----------	-------

OFFICE FILE NO. _____



NO SCALE

PREVIOUSLY RECORDED IN BOOK _____, PAGE _____
MONUMENT DESCRIPTION AND HOW ESTABLISHED _____

~~I hereby declare that this plat, survey or report was made by me or under my direct personal supervision and that I am a duly registered Land Surveyor under the laws of the State of Iowa.~~

Signed: _____

SEAL

JONES COUNTY
ENGINEER'S OFFICE

19501 HWY. 64,
ANAMOSA, IOWA,
52205 (319)462-3785