

2006 2776

FILED  
RECORDERS OFFICE  
JONES COUNTY IOWA

06 JUL 21 AM 11:21

MARKIE KRUTZFIELD  
RECORDER

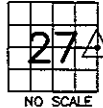
J.D. TJEPKES, LS. JONES COUNTY ENGINEER'S OFFICE, 19501 HWY. 64, ANAMOSA, IOWA, 52205 (319)462-3785

# UNITED STATES PUBLIC LAND SURVEY CORNER CERTIFICATE

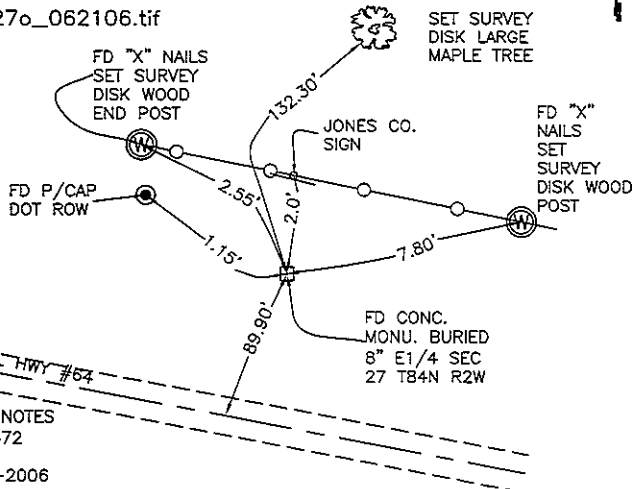
LAND SURVEY MONUMENTS SITUATED IN SECTION 27, TOWNSHIP 84  
NORTH, RANGE 2 WEST OF THE 5TH P.M., JONES COUNTY, IOWA

### CORNERS TO BE INDEXED

CORNER SECTION TOWNSHIP RANGE  
E1/4 27 84N 2W



OFFICE FILE NO.  
84227o\_062106.tif



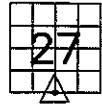
FIELD NOTES  
BK #372  
P 80  
6-05-2006

PREVIOUSLY RECORDED IN BOOK NA, PAGE NA  
MONUMENT DESCRIPTION AND HOW ESTABLISHED \_\_\_\_\_

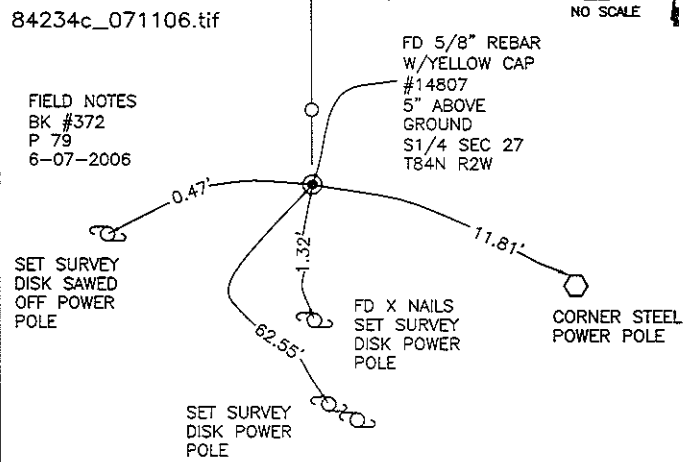
PER NOTES FROM IDOT PROJECT FN-64-1(3)--21-53, DATED 1-19-1979,  
AND TIES ON RECORD AT JONES COUNTY ENGINEER'S OFFICE, FOUND  
CONCRETE MONUMENT BURIED 8". RETIED AS INDICATED E1/4 SECTION 27  
T84N R2W.

### CORNERS TO BE INDEXED

CORNER SECTION TOWNSHIP RANGE  
S1/4 27 84N 2W



OFFICE FILE NO.  
84234c\_071106.tif



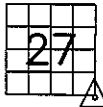
FIELD NOTES  
BK #372  
P 79  
6-07-2006

PREVIOUSLY RECORDED IN BOOK NA, PAGE NA  
MONUMENT DESCRIPTION AND HOW ESTABLISHED \_\_\_\_\_

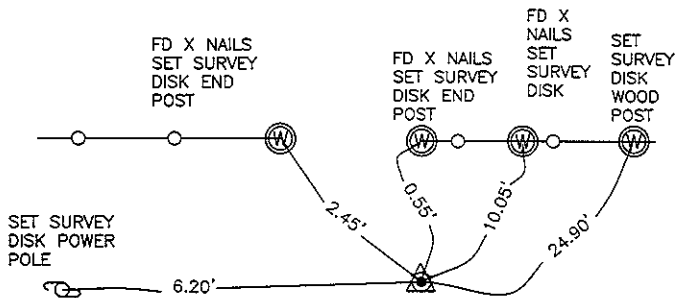
PER TIES FOUND 5/8"x24" REBAR W/YELLOW CAP #14807,  
5" ABOVE PRESENT GROUND. RETIED AS INDICATED.  
S1/4 CORNER SECTION 27 T84N R2W.

### CORNERS TO BE INDEXED

CORNER SECTION TOWNSHIP RANGE  
SE COR 27 84N 2W



OFFICE FILE NO.  
84234e\_071106.tif



FIELD NOTES  
BK #372  
P 79  
6-07-2006

PREVIOUSLY RECORDED IN BOOK NA, PAGE NA  
MONUMENT DESCRIPTION AND HOW ESTABLISHED \_\_\_\_\_

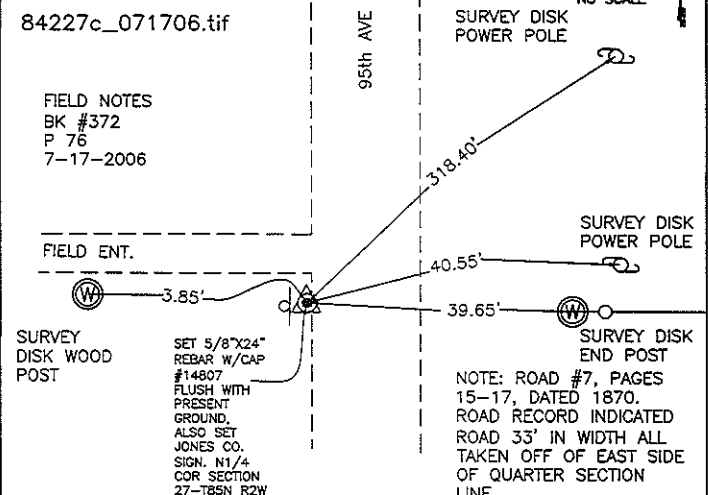
PER TIES ON RECORD AT JONES COUNTY ENGINEER'S OFFICE  
FOUND LIMESTONE BURIED 8". RETIED AS INDICATED. SE CORNER  
SECTION 27 T84N R2W.

### CORNERS TO BE INDEXED

CORNER SECTION TOWNSHIP RANGE  
N1/4 COR 27 84N 2W



OFFICE FILE NO.  
84227c\_071706.tif




FIELD NOTES  
BK #372  
P 76  
7-17-2006

PREVIOUSLY RECORDED IN BOOK NA, PAGE NA  
MONUMENT DESCRIPTION AND HOW ESTABLISHED \_\_\_\_\_

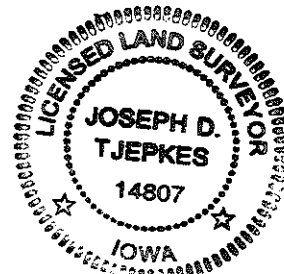
PER PHYSICAL EVIDENCE AND PLAT OF SURVEY ON FILE AT JONES COUNTY  
RECORDER'S OFFICE BOOK "H" PAGE 77 & 81 FILED BY LS #6581  
(DILLON), NO TIES ON FILE. SET 5/8"x24" REBAR W/CAP #14807 AND  
SMALL JONES COUNTY SIGN. TIES AS INDICATED FOR N1/4 CORNER  
SECTION 27 T85N R2W.

I hereby declare that this plat, survey or report was made by me or under my direct personal supervision and that I am a duly registered Land Surveyor under the laws of the State of Iowa.

Signed:  7-21-06

Joseph D. Tjepkes L.S. Iowa Reg. No. 14807  
My Registration Renewal Date is December 31, 2006

SEAL



J.D. TJEPKES LS 14807  
JONES COUNTY  
ENGINEER'S OFFICE

19501 HWY. 64,  
ANAMOSA, IOWA,  
52205 (319)462-3785

# THIS IS NOT A CERTIFICATION

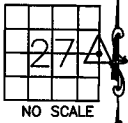
JONES COUNTY ENGINEER'S OFFICE, 19501 HWY. 64, ANAMOSA, IOWA, 52205 (319)462-3785

## UNITED STATES PUBLIC LAND SURVEY CORNER CERTIFICATE

LAND SURVEY MONUMENTS SITUATED IN SECTION 27, TOWNSHIP 84  
NORTH, RANGE 2 WEST OF THE 5TH P.M., JONES COUNTY, IOWA

**CORNERS TO BE INDEXED**

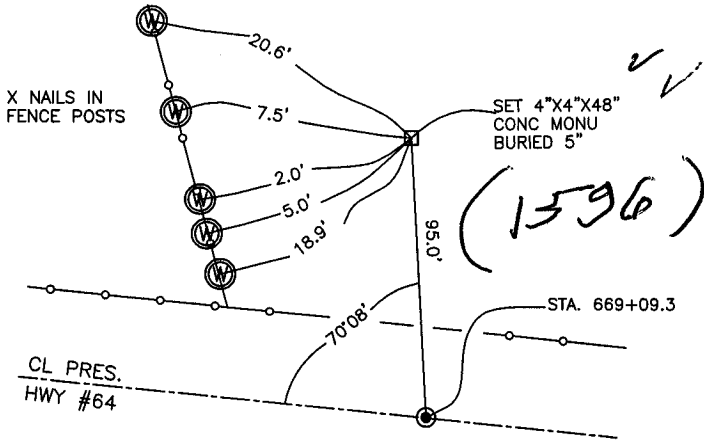
CORNER SECTION TOWNSHIP RANGE  
E1/4 27 84N 2W



OFFICE FILE NO.

84227o\_020504.jpg

TIES DRAWN  
2-05-04  
POWELL

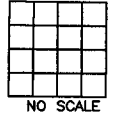


PREVIOUSLY RECORDED IN BOOK \_\_\_\_\_, PAGE \_\_\_\_\_  
MONUMENT DESCRIPTION AND HOW ESTABLISHED \_\_\_\_\_

TIES ON RECORD IN JONES CO. ENGINEER'S OFFICE. REF:  
PROJECT # F-641(3), IDOT. SET 4"X4"X48" CONCRETE  
MONUMENT BURIED 5". DATED 7-21-76

**CORNERS TO BE INDEXED**

CORNER SECTION TOWNSHIP RANGE

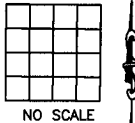


OFFICE FILE NO.

PREVIOUSLY RECORDED IN BOOK \_\_\_\_\_, PAGE \_\_\_\_\_  
MONUMENT DESCRIPTION AND HOW ESTABLISHED \_\_\_\_\_

**CORNERS TO BE INDEXED**

CORNER SECTION TOWNSHIP RANGE

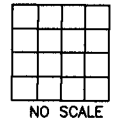


OFFICE FILE NO.

PREVIOUSLY RECORDED IN BOOK \_\_\_\_\_, PAGE \_\_\_\_\_  
MONUMENT DESCRIPTION AND HOW ESTABLISHED \_\_\_\_\_

**CORNERS TO BE INDEXED**

CORNER SECTION TOWNSHIP RANGE



OFFICE FILE NO.

PREVIOUSLY RECORDED IN BOOK \_\_\_\_\_, PAGE \_\_\_\_\_  
MONUMENT DESCRIPTION AND HOW ESTABLISHED \_\_\_\_\_

~~I hereby declare that this plat, survey or report was made by me or under my direct personal supervision and that I am a duly registered Land Surveyor under the laws of the State of Iowa.~~

Signed: \_\_\_\_\_

SEAL

JONES COUNTY  
ENGINEER'S OFFICE

19501 HWY. 64,  
ANAMOSA, IOWA,  
52205 (319)462-3785

J