

J.D. TJEPKES, LS. JONES COUNTY ENGINEER'S OFFICE, 19501 HWY. 64, ANAMOSA, IOWA, 52205 (319)462-3785

UNITED STATES PUBLIC LAND SURVEY CORNER CERTIFICATE

LAND SURVEY MONUMENTS SITUATED IN SECTION 35, TOWNSHIP 85
NORTH, RANGE 2 WEST OF THE 5TH P.M., JONES COUNTY, IOWA

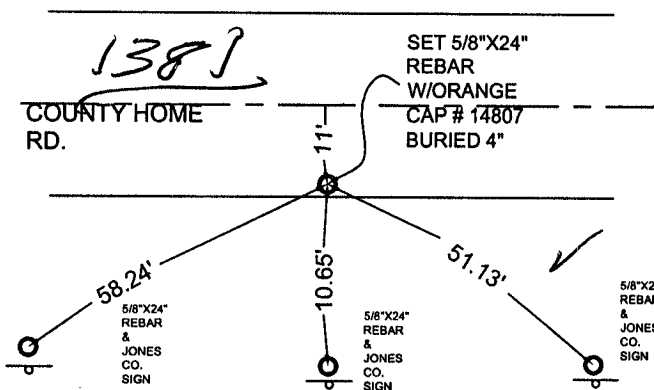
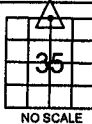
CORNERS TO BE INDEXED

CORNER SECTION TOWNSHIP RANGE
N1/4 35 85N 2W

OFFICE FILE NO.

85235c_071003.jpg

FIELD
NOTES:
5-27-03
BK 366
P 13



PREVIOUSLY RECORDED IN BOOK NA, PAGE NA
MONUMENT DESCRIPTION AND HOW ESTABLISHED

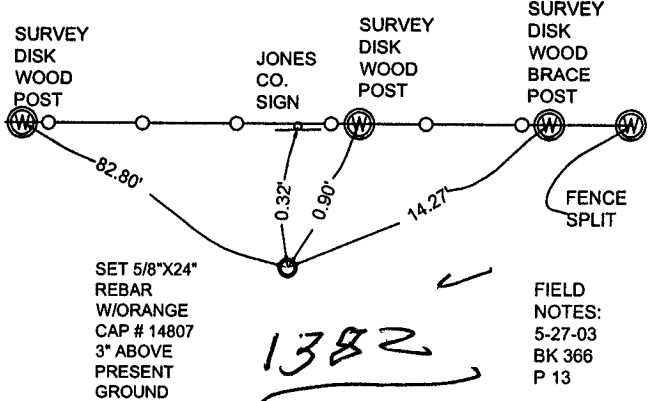
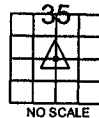
PER PROPORTIONATE MEASUREMENTS FROM NW CORNER SEC 35 TO NE
CORNER SEC 35 SET 5/8"X24" REBAR W/ORANGE CAP #14807 ON SPLIT.
BURIED 4" IN SOUTH EDGE OF ROAD. TIES AS INDICATED.

CORNERS TO BE INDEXED

CORNER SECTION TOWNSHIP RANGE
CENTER 35 85N 2W

OFFICE FILE NO.

85235m_071003.jpg



PREVIOUSLY RECORDED IN BOOK NA, PAGE NA
MONUMENT DESCRIPTION AND HOW ESTABLISHED

PER BREAKDOWN OF SECTION 35, CROSSING OF QT CORNERS, SET
5/8"X24" REBAR W/ORANGE CAP #14807, ON SOUTH SIDE OF FENCE
RUNNING EAST-WEST. REBAR 3" ABOVE PRESENT GROUND. TIES AS
INDICATED.

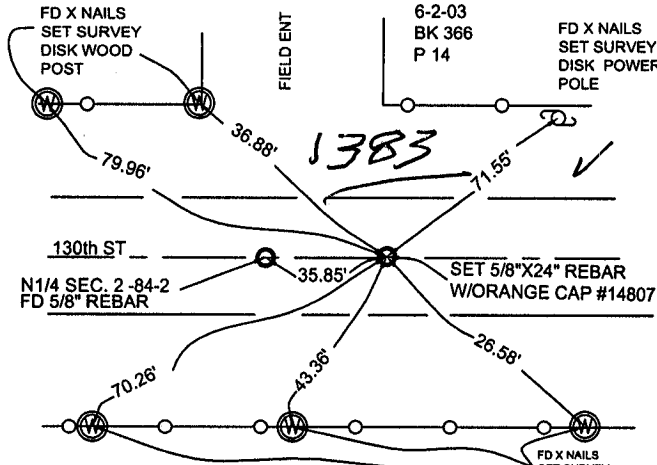
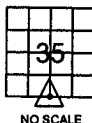
CORNERS TO BE INDEXED

CORNER SECTION TOWNSHIP RANGE
S1/4 35 85N 2W

OFFICE FILE NO.

85235w_071003.jpg

FIELD
NOTES:
6-2-03
BK 366
P 14



PREVIOUSLY RECORDED IN BOOK NA, PAGE NA
MONUMENT DESCRIPTION AND HOW ESTABLISHED

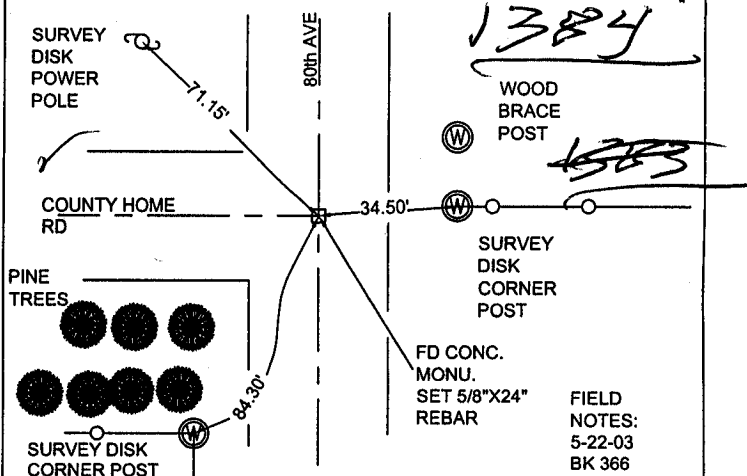
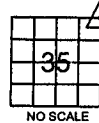
PER PROPORTIONATE DISTANCE BETWEEN SE CORNER SEC.35 & SW
CORNER SEC. 35, SET 5/8"X24" REBAR, W/ ORANGE CAP #14807, EQUAL
DISTANCE AND ON LINE, IN ROAD BED, BURIED 4". TIES AS INDICATED.

CORNERS TO BE INDEXED

CORNER SECTION TOWNSHIP RANGE
NE 35 85N 2W

OFFICE FILE NO.

85235e_071003.jpg



PREVIOUSLY RECORDED IN BOOK NA, PAGE NA
MONUMENT DESCRIPTION AND HOW ESTABLISHED

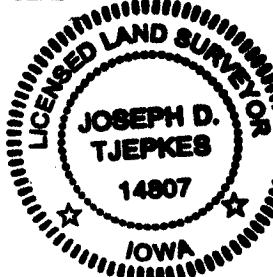
PER DOT TIES RECORDED IN JONES CO. ENGINEER'S OFFICE DATED 1955,
PROJECT F-814(3), FOUND CONC. MONU. WITH IRON PIN BURIED 30" IN
CENTER OF INTERSECTION OF COUNTY HOME RD & 80th AVE. SET 5/8"X24"
REBAR ON TOP OF MONU. BURIED 6" & RETIED AS INDICATED.

I hereby declare that this plat, survey or report
was made by me or under my direct personal
supervision and that I am a duly registered Land
Surveyor under the laws of the State of Iowa.

Signed:

Joseph D. Tjepkes 7.10.05
Joseph D. Tjepkes L.S. Iowa Reg. No. 14807
My Registration Renewal Date is December 31, 2004

SEAL



J.D. TJEPKES LS 14807
JONES COUNTY
ENGINEER'S OFFICE

19501 HWY. 64,
ANAMOSA, IOWA,
52205 (319)462-3785

2001 2750

FILED
RECORDERS OFFICE
JONES COUNTY IOWA

01 AUG -6 AM 8:48

MARIE KRUTZFIELD 600 Pd
RECORDER

J.D. TJEPKES, 23428 RIDGE RD. ANAMOSA, IOWA, 52205 (319)462-6067

UNITED STATES PUBLIC LAND SURVEY CORNER CERTIFICATE

LAND SURVEY MONUMENTS SITUATED IN SECTION 2, TOWNSHIP 84
NORTH, RANGE 2 WEST OF THE 5TH P.M., JONES COUNTY, IOWA

953 CORNERS TO BE INDEXED

CORNER	SECTION	TOWNSHIP	RANGE
NE	2	84N	2W

PREVIOUSLY RECORDED IN BOOK N/A, PAGE N/A
MONUMENT DESCRIPTION AND HOW ESTABLISHED SET 5/8"x24"
REBAR WITH YELLOW CAP LS 14807 AT A PROPORTIONATE DISTANCE
FROM THE NW. COR. SEC. 2, T84N, R2W TO THE SE. COR. SEC. 35,
T85N, R2W TO ESTABLISH THE NE. COR. SEC. 2, T84N, R2W OF THE
5TH P.M., JONES COUNTY, IOWA. SET TIE POINTS AS INDICATED.

954 CORNERS TO BE INDEXED

CORNER	SECTION	TOWNSHIP	RANGE
N-1/4	2	84N	2W

PREVIOUSLY RECORDED IN BOOK N/A, PAGE N/A
MONUMENT DESCRIPTION AND HOW ESTABLISHED SET 5/8"x24"
REBAR WITH YELLOW CAP LS 14807 AT A PROPORTIONATE
DISTANCE FROM THE NW. COR. SEC. 2 TO THE NE. COR. SEC.
2 TO ESTABLISH THE NORTH QUARTER COR. SEC. 2, T84N, R2W,
OF THE 5TH P.M., JONES COUNTY, IOWA. SET REFERENCE POINTS
AND TIED OUT AS INDICATED.

955 CORNERS TO BE INDEXED

CORNER	SECTION	TOWNSHIP	RANGE
NORTHWEST	2	84N	2W

NOTE:
ALL TIES AS INDICATED
ARE SLOPE MEASURED.

PREVIOUSLY RECORDED IN BOOK ", PAGE 59
MONUMENT DESCRIPTION AND HOW ESTABLISHED FOUND 5/8"x
30" REBAR 0.3' BELOW ROAD SURFACE PER ORRIS'S FIRST
ADDITION TO JONES COUNTY. NORTHWEST CORNER SECTION 2, T84N,
R2W, 5TH PRINCIPAL MERIDIAN, JONES COUNTY, IOWA. SET
REFERENCE POINTS AND TIED OUT AS INDICATED.

956 CORNERS TO BE INDEXED

CORNER	SECTION	TOWNSHIP	RANGE
SOUTHWEST	2	84N	2W

PREVIOUSLY RECORDED IN BOOK N/A, PAGE N/A
MONUMENT DESCRIPTION AND HOW ESTABLISHED SET 5/8"x24"
REBAR WITH YELLOW CAP LS 14807 IN CL PAVEMENT PER COUNTY
ENGINEER'S E-23 ROAD PLANS AT STATION 1058+68. SET REFERENCE
POINTS AND TIED OUT AS INDICATED. SW. COR. SECTION 2, T84N,
R2W, 5TH PRINCIPAL MERIDIAN, JONES COUNTY, IOWA

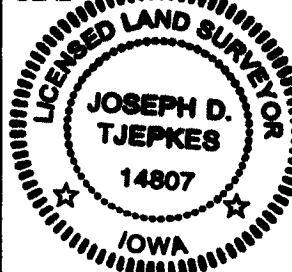
I hereby declare that this plat, survey or report was made by me or under my direct personal supervision and that I am a duly registered Land Surveyor under the laws of the State of Iowa.

Signed:

Joseph D. Tjepkes 7-30-02

Joseph D. Tjepkes L.S. Iowa Reg. No. 14807
My Registration Renewal Date is December 31, 2002

SEAL



J.D. TJEPKES LS 14807
23428 RIDGE ROAD
ANAMOSA, IOWA 52205