

UNITED STATES PUBLIC LAND SURVEY CORNER CERTIFICATE OF

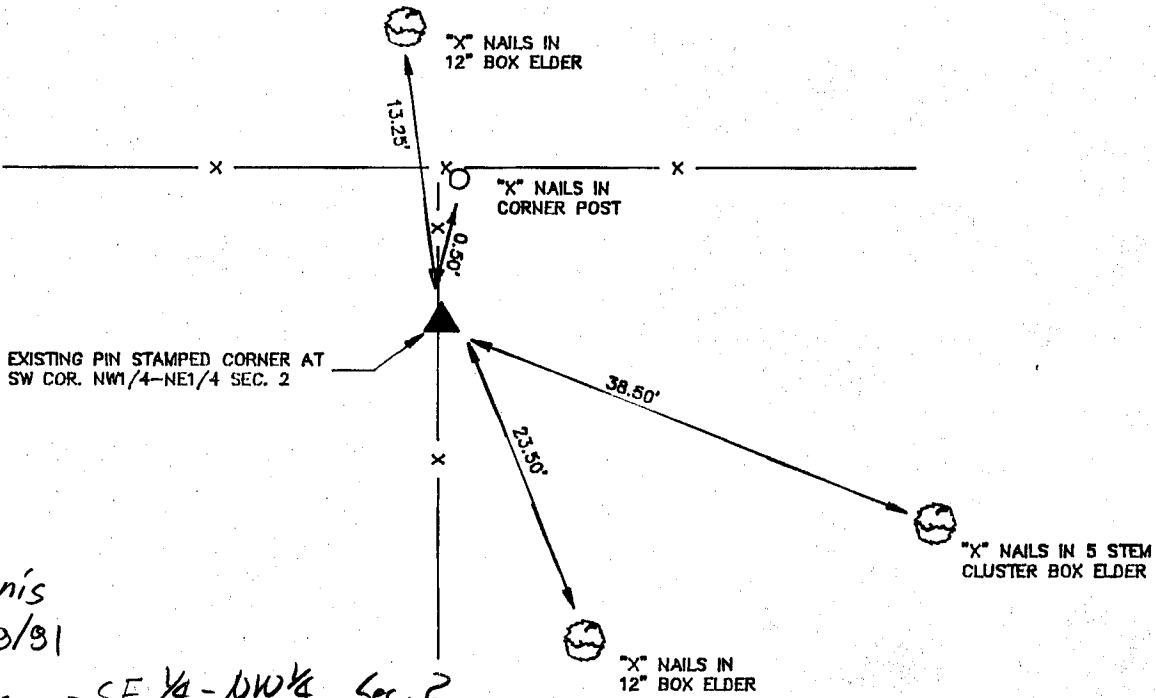
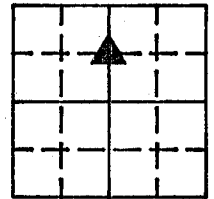
LAND SURVEY MONUMENTS SITUATED IN SECTION 2, TOWNSHIP 84 N, RANGE 2 W
OF THE FIFTH PRINCIPAL MERIDIAN, JONES COUNTY, IOWA.
PREVIOUSLY RECORDED IN _____ IN COUNTY RECORDER'S OFFICE.

(Show reason for preparing this certificate, the evidence and detailed procedures used in establishing the corner positions and monumentation found or placed.)

Monument Description and Remarks: FOUND EXISTING PIN STAMPED CORNER AT SW COR.
NW 1/4- NE 1/4 SEC. 2, T84N, R2W

PLAN - VIEW

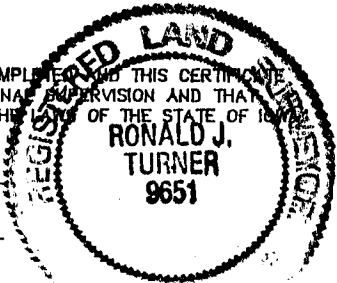
(Show a minimum of three reference ties to durable physical objects, relevant monuments and physical conditions that will enable recovery of the corner.)



Dennis
7/29/81
NE Cor. - SE 1/4 - NW 1/4 Sec. 2

I HEREBY CERTIFY THAT THE SURVEY WORK WAS COMPLETED AND THIS CERTIFICATE WAS PREPARED BY ME OR UNDER MY DIRECT PERSONAL SUPERVISION AND THAT I AM A DULY REGISTERED LAND SURVEYOR UNDER THE LAWS OF THE STATE OF IOWA.

Ronald J. Turner
NAME: RONALD J. TURNER REG. NO. 9651
DATE: *Jan 24, 1991*



LIST CORNERS TO BE INDEXED

CORNERS	SECTION	TWP	RANGE
SW	2	84N	2W
NW1/4- NE1/4			

	IIV ENGINEERS & SURVEYORS P.C.	MONUMENT RECORD			
	3210 ST. JOSEPH DR DUBUQUE, IA 52001 319556-2484 302 S. RIVER PARK DR GUTTENBERG, IA 52052 319252-3823 P.O. BOX 275 GALENA, ILL 61036 815777-0359	COUNTY: <u>JONES</u> TOWNSHIP: <u>MADISON</u>	DATE: <u>1-21-81</u> REVISED:	FIELD BOOK NO. <u>315</u>	PROJ. NO. <u>88082-5</u>