

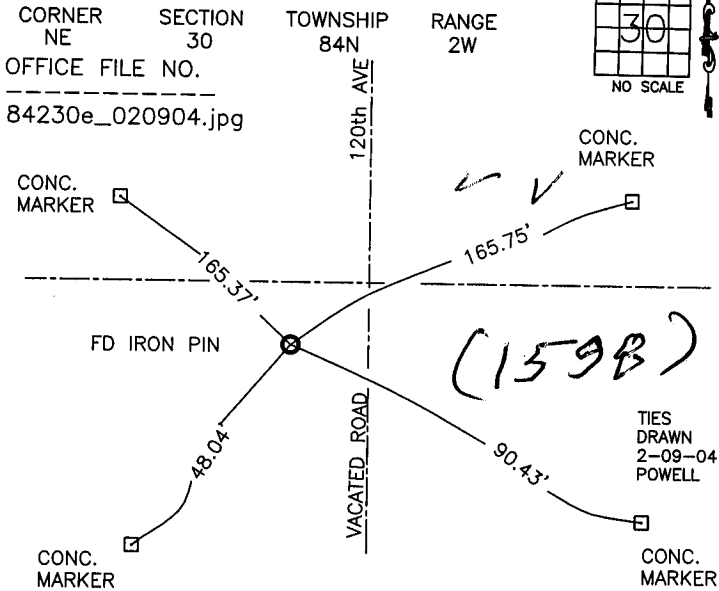
THIS IS NOT A CERTIFICATION

JONES COUNTY ENGINEER'S OFFICE, 19501 HWY. 64, ANAMOSA, IOWA, 52205 (319)462-3785

# UNITED STATES PUBLIC LAND SURVEY CORNER CERTIFICATE

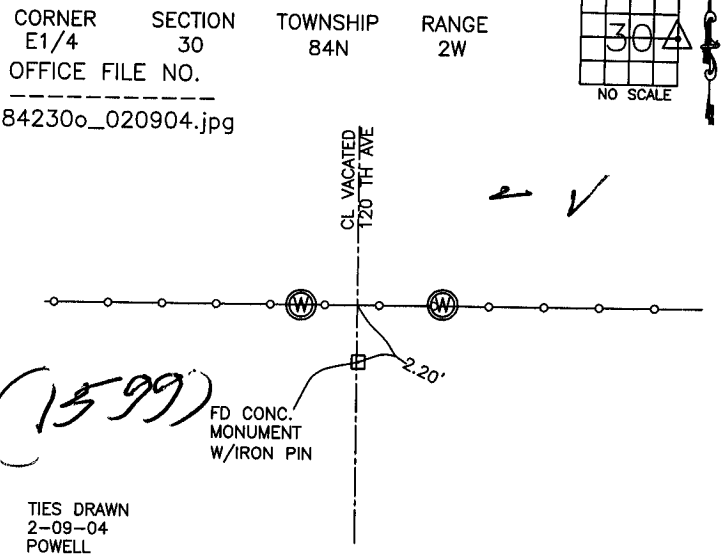
LAND SURVEY MONUMENTS SITUATED IN SECTION 30, TOWNSHIP 84 NORTH, RANGE 2 WEST OF THE 5TH P.M., JONES COUNTY, IOWA

### CORNERS TO BE INDEXED



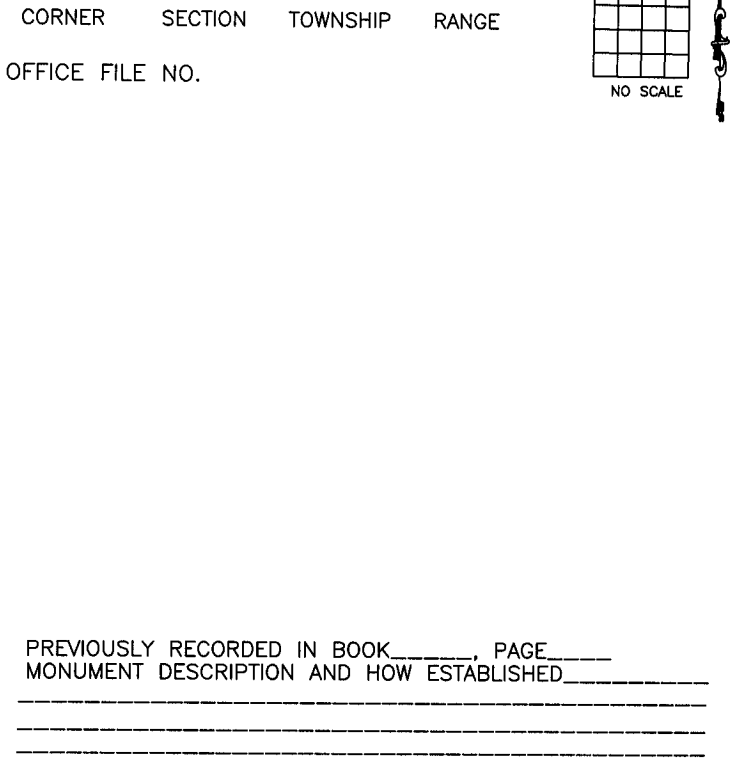
PREVIOUSLY RECORDED IN BOOK NA, PAGE NA  
 MONUMENT DESCRIPTION AND HOW ESTABLISHED \_\_\_\_\_  
 TIES ON RECORD IN JONES CO. ENGINEER'S OFFICE REF: TO IDOT  
 PROJECT # F-64-1(2)--20-53 & JONES CO. MISC. BK  
 #1989-1991 P.31, FOUND IRON PIN & CONCRETE MARKERS. TIES  
 DATED 3-20-90.

### CORNERS TO BE INDEXED

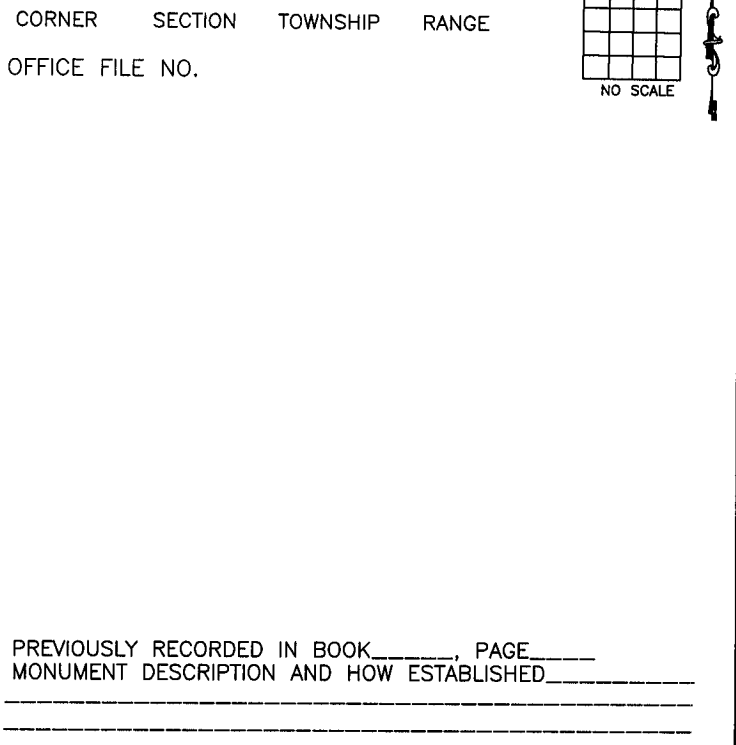


PREVIOUSLY RECORDED IN BOOK NA, PAGE NA  
 MONUMENT DESCRIPTION AND HOW ESTABLISHED \_\_\_\_\_  
 TIES ON RECORD IN JONES CO. ENGINEER'S OFFICE REF: TO IDOT  
 PROJECT # F-64-1(2)--20-53 & JONES CO. MISC. BK  
 #1989-1991 P.31, FOUND IRON PIN & CONCRETE MONUMENT. TIES  
 DATED 3-20-90.

### CORNERS TO BE INDEXED



### CORNERS TO BE INDEXED



~~I hereby declare that this plat, survey or report was made by me or under my direct personal supervision and that I am a duly registered Land Surveyor under the laws of the State of Iowa.~~

Signed: \_\_\_\_\_

SEAL

JONES COUNTY ENGINEER'S OFFICE

19501 HWY. 64,  
ANAMOSA, IOWA,  
52205 (319)462-3785