

**UNITED STATES PUBLIC LAND SURVEY CORNER CERTIFICATE**

Land Survey Monuments situated in Section 32, Township 84N, Range 2W, of the Fifth Principal Meridian, Jones County, Iowa. Previously recorded in N/A in the Office of the County Recorder

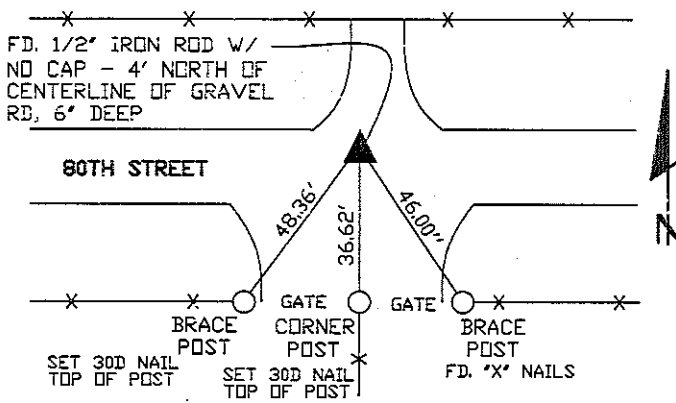
Monument Description and Remarks: (No Corner Certificates found at the County Recorders Office)

NW CORNER - FOUND 1/2" IRON ROD WITH NO CAP BURIED 6" DEEP

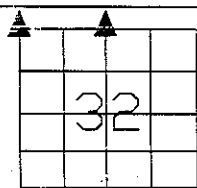
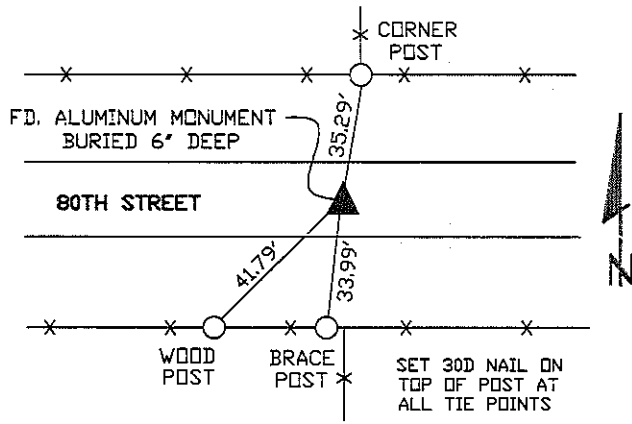
N1/4 CORNER - FOUND ALUMINUM MONUMENT BURIED 6" DEEP

**PLAN VIEW**

**NW CORNER**



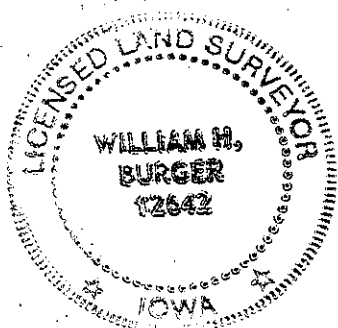
**N1/4 CORNER**



SEC. 32 TWP. 84N RANGE 2W

**CORNERS TO BE INDEXED**

NW CORNER	32	84N	2W
N1/4 CORNER	32	84N	2W



I hereby certify that this land surveying document was prepared and related survey work was performed by me or under my direct personal supervision and that I am a duly licensed Land Surveyor under the laws of the State of Iowa.

*William H. Burger* 1/13/09  
 William H. Burger Date

License number 12642

My license renewal date is December 31, 2008

Pages or Sheets covered by this seal: Sheet 1 of 1

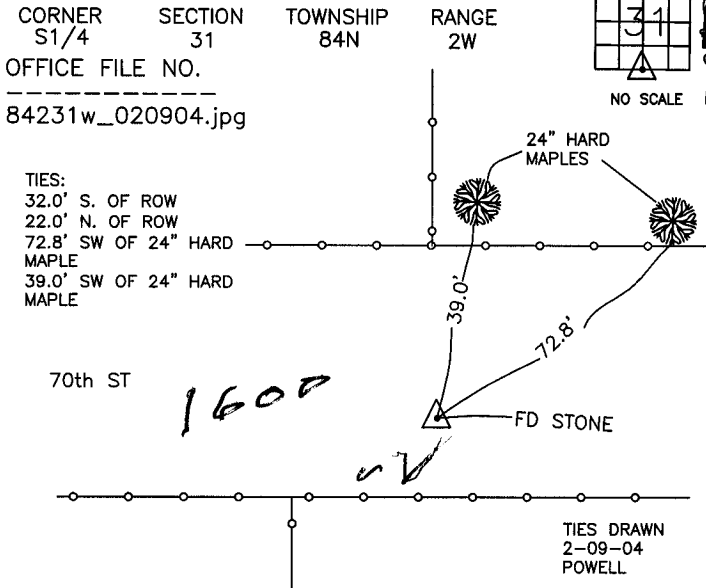
# THIS IS NOT A CERTIFICATION

JONES COUNTY ENGINEER'S OFFICE, 19501 HWY. 64, ANAMOSA, IOWA, 52205 (319)462-3785

## UNITED STATES PUBLIC LAND SURVEY CORNER CERTIFICATE

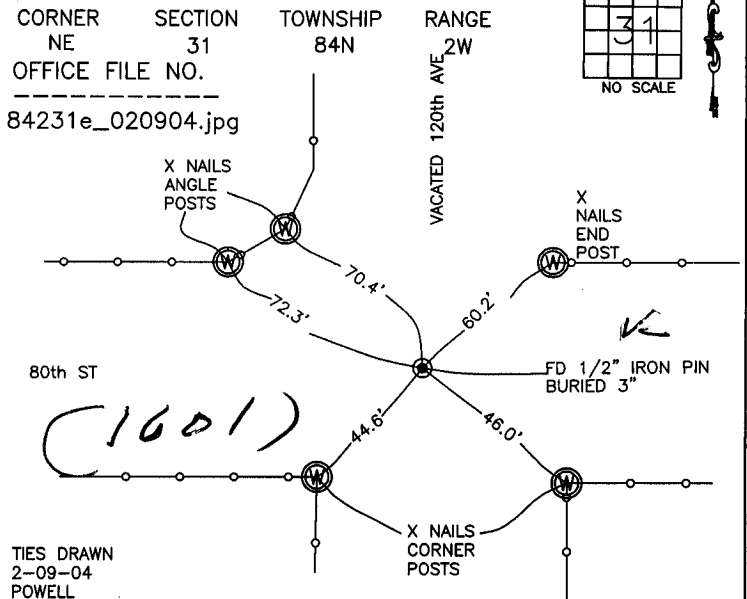
LAND SURVEY MONUMENTS SITUATED IN SECTION 31, TOWNSHIP 84  
NORTH, RANGE 2 WEST OF THE 5TH P.M., JONES COUNTY, IOWA

### CORNERS TO BE INDEXED



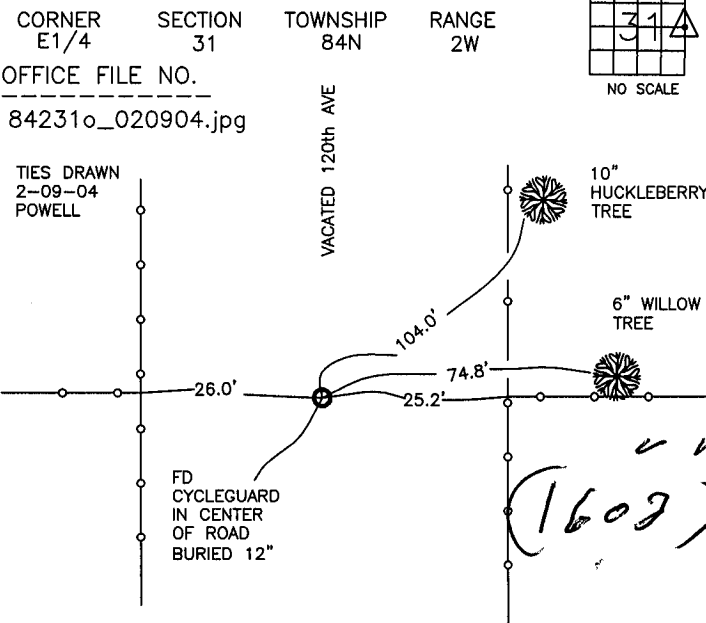
PREVIOUSLY RECORDED IN BOOK NA, PAGE NA  
MONUMENT DESCRIPTION AND HOW ESTABLISHED \_\_\_\_\_  
TIES ON RECORD IN JONES CO. ENGINEER'S OFFICE: FOUND 12"X12"X12" GRANITE 5'-8" SOUTH OF FENCE SPLIT BURIED 26" UNDER PRESENT ROAD SURFACE. JONES CO. CORNER STONE BK #1 P. 16. NO DATE RECORDED.

### CORNERS TO BE INDEXED



PREVIOUSLY RECORDED IN BOOK NA, PAGE NA  
MONUMENT DESCRIPTION AND HOW ESTABLISHED \_\_\_\_\_  
TIES ON RECORD IN JONES CO. ENGINEER'S OFFICE REF: TO IDOT PROJECT # F-61-1(2)--20-53.

### CORNERS TO BE INDEXED



PREVIOUSLY RECORDED IN BOOK NA, PAGE NA  
MONUMENT DESCRIPTION AND HOW ESTABLISHED \_\_\_\_\_

TIES ON RECORD IN JONES CO. ENGINEER'S OFFICE. REF: JONES CO. CORNER STONE BK #1 P. 17. FOUND CYCLE GUARD IN CENTER OF ROAD BURIED 12". GUARD WAS STANDING ON END AND WAS 2"X8".

### CORNERS TO BE INDEXED



PREVIOUSLY RECORDED IN BOOK \_\_\_\_\_, PAGE \_\_\_\_\_  
MONUMENT DESCRIPTION AND HOW ESTABLISHED \_\_\_\_\_

~~I hereby declare that this plat, survey or report was made by me or under my direct personal supervision and that I am a duly registered Land Surveyor under the laws of the State of Iowa.~~

Signed: \_\_\_\_\_

SEAL

JONES COUNTY  
ENGINEER'S OFFICE

19501 HWY. 64,  
ANAMOSA, IOWA,  
52205 (319)462-3785

*h*