

**UNITED STATES PUBLIC LAND SURVEY CORNER CERTIFICATE**

Land Survey Monuments situated in Section 32, Township 84N, Range 2W, of the Fifth Principal Meridian, Jones County, Iowa. Previously recorded in N/A in the Office of the County Recorder

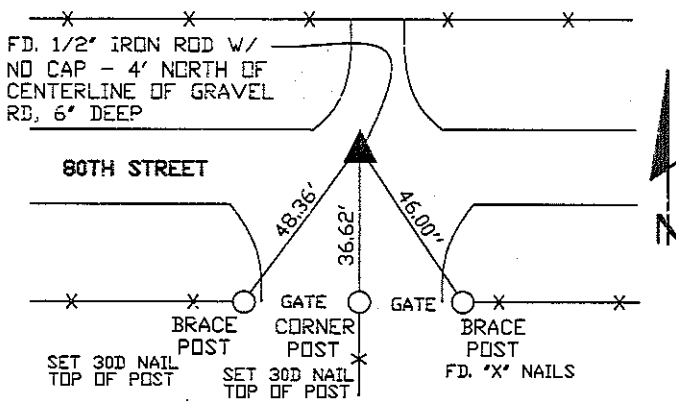
Monument Description and Remarks: (No Corner Certificates found at the County Recorders Office)

NW CORNER - FOUND 1/2" IRON ROD WITH NO CAP BURIED 6" DEEP

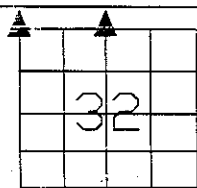
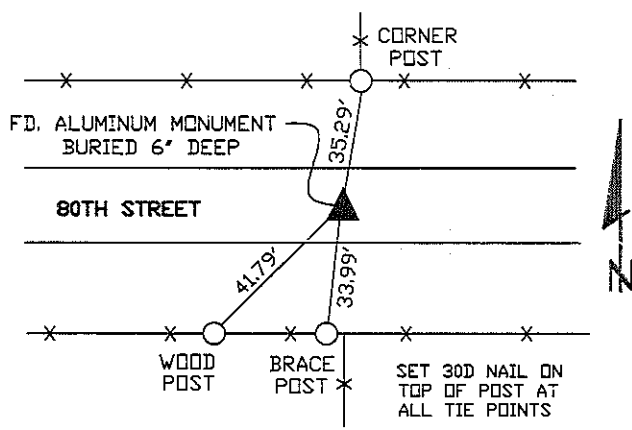
N1/4 CORNER - FOUND ALUMINUM MONUMENT BURIED 6" DEEP

**PLAN VIEW**

**NW CORNER**



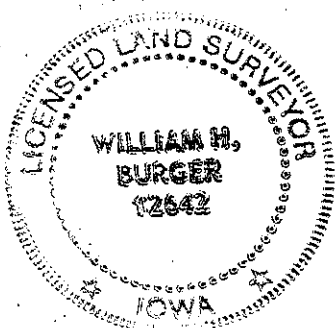
**N1/4 CORNER**



SEC. 32 TWP. 84N RANGE 2W

**CORNERS TO BE INDEXED**

|             |    |     |    |
|-------------|----|-----|----|
| NW CORNER   | 32 | 84N | 2W |
| N1/4 CORNER | 32 | 84N | 2W |
|             |    |     |    |
|             |    |     |    |



I hereby certify that this land surveying document was prepared and related survey work was performed by me or under my direct personal supervision and that I am a duly licensed Land Surveyor under the laws of the State of Iowa.

*William H. Burger* 1/13/09  
 William H. Burger Date

License number 12642

My license renewal date is December 31, 2008

Pages or Sheets covered by this seal: Sheet 1 of 1

# THIS IS NOT A CERTIFICATION

JONES COUNTY ENGINEER'S OFFICE, 19501 HWY. 64, ANAMOSA, IOWA, 52205 (319)462-3785

## UNITED STATES PUBLIC LAND SURVEY CORNER CERTIFICATE

LAND SURVEY MONUMENTS SITUATED IN SECTION 32, TOWNSHIP 84  
NORTH, RANGE 2 WEST OF THE 5TH P.M., JONES COUNTY, IOWA

**CORNERS TO BE INDEXED**

|              |               |                 |             |
|--------------|---------------|-----------------|-------------|
| CORNER<br>NE | SECTION<br>32 | TOWNSHIP<br>84N | RANGE<br>2W |
|--------------|---------------|-----------------|-------------|

OFFICE FILE NO. 84232e\_020904.jpg

TIES  
DRAWN  
2-09-04  
POWELL

PREVIOUSLY RECORDED IN BOOK \_\_\_\_\_, PAGE \_\_\_\_\_  
MONUMENT DESCRIPTION AND HOW ESTABLISHED \_\_\_\_\_

TIES ON RECORD IN JONES CO. ENGINEER'S OFFICE REF: TO IDOT  
PROJECT #F-64-1(2)--20-53, FOUND 12"X14"X18" GRANITE STONE  
3.8' DEEP. SET CONCRETE MONUMENT WITH TOP 4" DEEP IN  
ROADBED. DATED 4-23-1974.

**CORNERS TO BE INDEXED**

|                |               |                 |             |
|----------------|---------------|-----------------|-------------|
| CORNER<br>N1/4 | SECTION<br>32 | TOWNSHIP<br>84N | RANGE<br>2W |
|----------------|---------------|-----------------|-------------|

OFFICE FILE NO. 84232c\_020904.jpg

TIES  
DRAWN  
2-09-04  
POWELL

PREVIOUSLY RECORDED IN BOOK \_\_\_\_\_, PAGE \_\_\_\_\_  
MONUMENT DESCRIPTION AND HOW ESTABLISHED \_\_\_\_\_

TIES ON RECORD IN JONES CO. ENGINEER'S OFFICE REF: TO  
IDOT PROJECT # F-64-1(2)--20-53, FOUND IRON PIN 42"  
DEEP IN ROADBED, SET CONCRETE MONUMENT BURIED 4".

**CORNERS TO BE INDEXED**

|        |         |          |       |
|--------|---------|----------|-------|
| CORNER | SECTION | TOWNSHIP | RANGE |
|--------|---------|----------|-------|

OFFICE FILE NO. \_\_\_\_\_

NO SCALE

PREVIOUSLY RECORDED IN BOOK \_\_\_\_\_, PAGE \_\_\_\_\_  
MONUMENT DESCRIPTION AND HOW ESTABLISHED \_\_\_\_\_

**CORNERS TO BE INDEXED**

|        |         |          |       |
|--------|---------|----------|-------|
| CORNER | SECTION | TOWNSHIP | RANGE |
|--------|---------|----------|-------|

OFFICE FILE NO. \_\_\_\_\_

NO SCALE

PREVIOUSLY RECORDED IN BOOK \_\_\_\_\_, PAGE \_\_\_\_\_  
MONUMENT DESCRIPTION AND HOW ESTABLISHED \_\_\_\_\_

~~I hereby declare that this plat, survey or report was made by me or under my direct personal supervision and that I am a duly registered Land Surveyor under the laws of the State of Iowa.~~

Signed: \_\_\_\_\_

SEAL

JONES COUNTY  
ENGINEER'S OFFICE

19501 HWY. 64,  
ANAMOSA, IOWA,  
52205 (319)462-3785

X