

2005 0842

FILED  
RECORDERS OFFICE  
JONES COUNTY IOWA

05 MAR 11 AM 11:36

MARIE KRUTZFIELD  
RECORDER 7.00 Pd

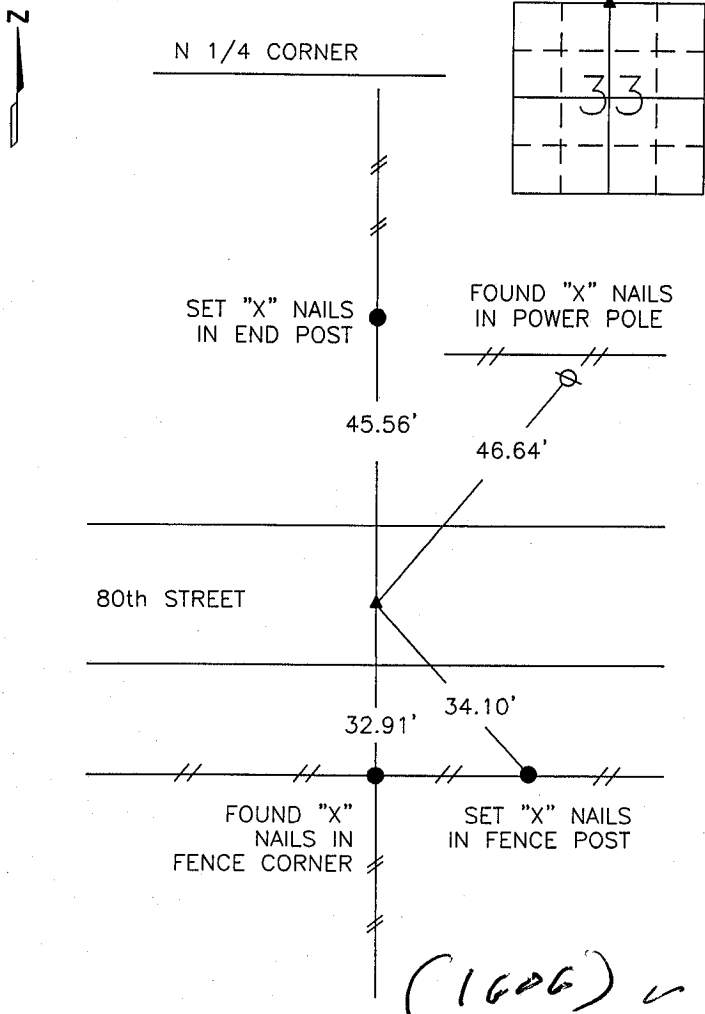
PREPARED BY

STEPHEN MICHAEL BRAIN, BRAIN ENGINEERING, INC., 1540 MIDLAND COURT NE, CEDAR RAPIDS, IOWA PH. (319) 294-9424

# UNITED STATES PUBLIC LAND SURVEY CORNER CERTIFICATE

LAND SURVEY MONUMENTS SITUATED IN SECTION 33, TOWNSHIP 84 NORTH  
RANGE 2 WEST OF THE 5TH P.M., JONES COUNTY, IOWA.

NO SCALE



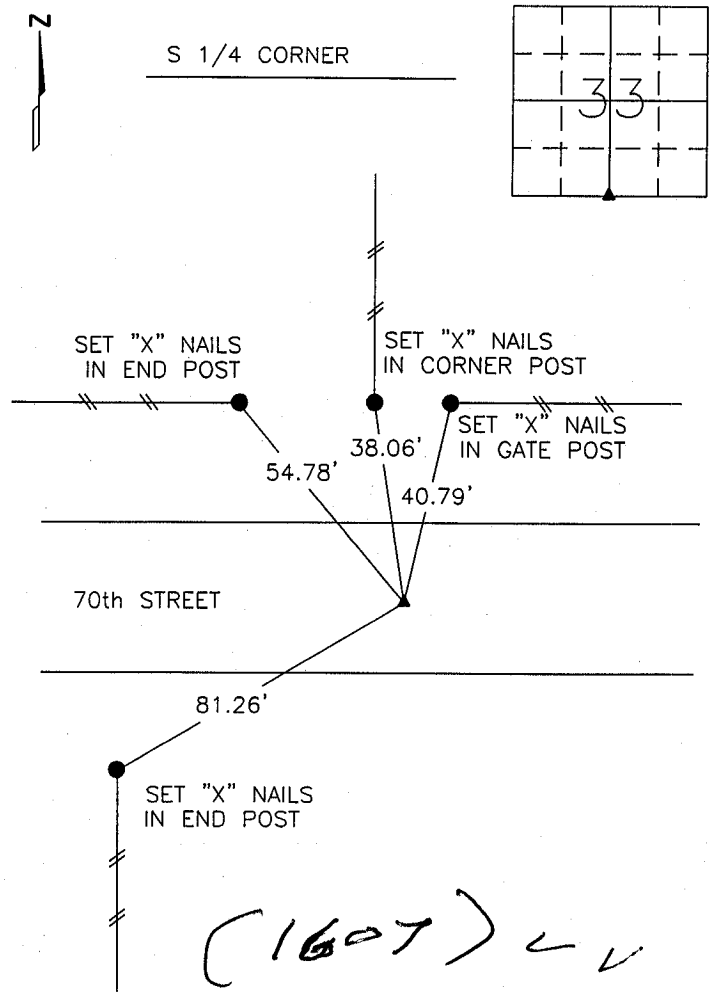
84233C-031005.712

PREVIOUSLY RECORDED IN BOOK \_\_\_\_\_ PAGE \_\_\_\_\_

MONUMENT DESCRIPTION AND HOW ESTABLISHED \_\_\_\_\_

FOUND 1/2" REBAR 6" BELOW SURFACE

NO SCALE



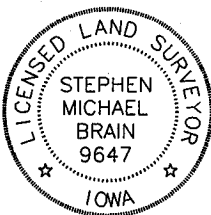
84233W-031005.712

PREVIOUSLY RECORDED IN BOOK \_\_\_\_\_ PAGE \_\_\_\_\_

MONUMENT DESCRIPTION AND HOW ESTABLISHED \_\_\_\_\_

SET 1/2" REBAR W/YPC #9647, 6" BELOW SURFACE

AT MIDPOINT OF SOUTH LINE OF SECTION 33-T84N-R2W.



I hereby certify that this land surveying document and the related survey work was performed by me or under my direct personal supervision and that I am a duly licensed Land Surveyor under the laws of the State of Iowa.  
Signed \_\_\_\_\_ Date 3/10/05

Stephen Michael Brain, L.S.  
My License Renewal Date Is December 31, 2006  
License Number 9647  
Pages or sheets covered by this seal: 1/1

- A. THERE IS NO CERTIFICATE FOR THE CORNER ON FILE WITH THE RECORDER OF THE COUNTY IN WHICH THE CORNER IS LOCATED
- B. THE SURVEYOR IN RESPONSIBLE CHARGE OF THE LAND SURVEYING ACCEPTS A CORNER POSITION WHICH DIFFERS FROM THAT SHOWN IN THE PUBLIC RECORDS OF THE COUNTY IN WHICH THE CORNER IS LOCATED.
- C. THE CORNER MONUMENT IS REPLACED OR MODIFIED IN ANY WAY.
- D. THE REFERENCE TIES REFERRED TO IN AN EXISTING PUBLIC RECORD ARE NOT CORRECT.

### CORNERS TO BE INDEXED

CORNER	SECTION	TOWNSHIP	RANGE
N 1/4 CORNER	33	T84N	R 2 W
S 1/4 CORNER	33	T84N	R 2 W

**BRAIN ENGINEERING, INC.**

1540 MIDLAND COURT NE  
CEDAR RAPIDS, IOWA 52402  
(319) 294-9424

285005-40

vsmB