

THIS IS NOT A CERTIFICATION

JONES COUNTY ENGINEER'S OFFICE, 19501 HWY. 64, ANAMOSA, IOWA, 52205 (319)462-3785

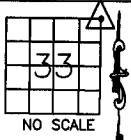
UNITED STATES PUBLIC LAND SURVEY CORNER CERTIFICATE

LAND SURVEY MONUMENTS SITUATED IN SECTION 33, TOWNSHIP 84
NORTH, RANGE 2 WEST OF THE 5TH P.M., JONES COUNTY, IOWA

CORNERS TO BE INDEXED

CORNER SECTION TOWNSHIP RANGE
NE 33 84N 2W

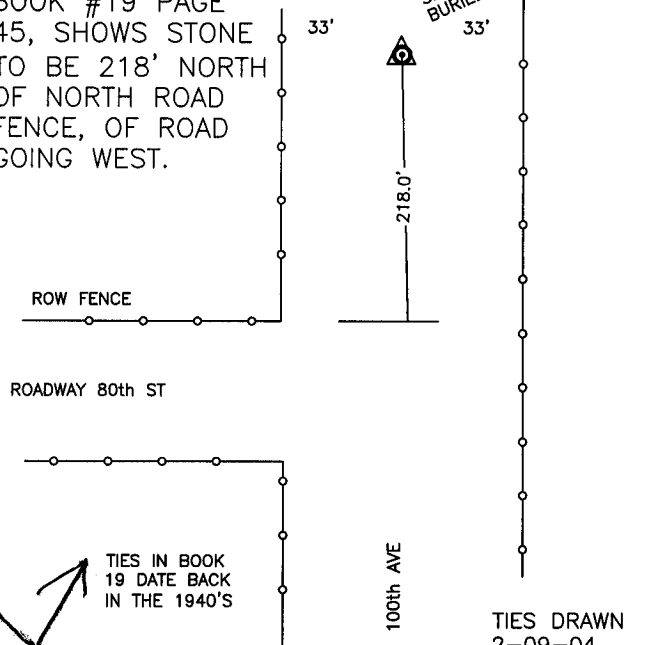
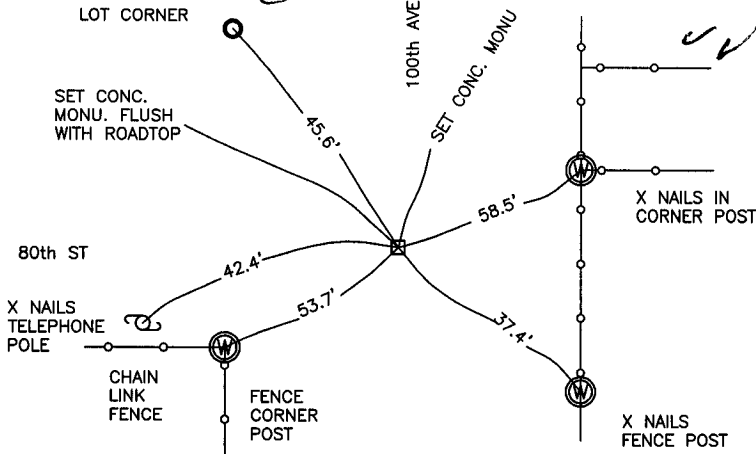
OFFICE FILE NO.
84233e_020904.jpg



TIES IN JONES CO.
CORNER STONE

BOOK #19 PAGE 45, SHOWS STONE TO BE 218' NORTH OF NORTH ROAD FENCE, OF ROAD GOING WEST.

FD STONE SET GAS PIPE OVER STONE BURIED 3.5'



PREVIOUSLY RECORDED IN BOOK NA, PAGE NA
MONUMENT DESCRIPTION AND HOW ESTABLISHED _____

TIES ON RECORD IN JONES CO. ENGINEER'S OFFICE REF: TO IDOT PROJECT # F-64-1(3), SET CONCRETE MONUMENT FLUSH WITH ROADTOP. DATED 7-24-1974.

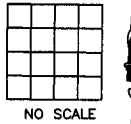
TIES IN BOOK 19 DATE BACK IN THE 1940'S

TIES DRAWN 2-09-04 POWELL

CORNERS TO BE INDEXED

CORNER SECTION TOWNSHIP RANGE

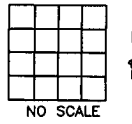
OFFICE FILE NO.



CORNERS TO BE INDEXED

CORNER SECTION TOWNSHIP RANGE

OFFICE FILE NO.



MAY BE CONFLICT
HERE

PREVIOUSLY RECORDED IN BOOK _____, PAGE _____
MONUMENT DESCRIPTION AND HOW ESTABLISHED _____

PREVIOUSLY RECORDED IN BOOK _____, PAGE _____
MONUMENT DESCRIPTION AND HOW ESTABLISHED _____

~~I hereby declare that this plat, survey or report was made by me or under my direct personal supervision and that I am a duly registered Land Surveyor under the laws of the State of Iowa.~~

Signed: _____

SEAL

JONES COUNTY ENGINEER'S OFFICE

19501 HWY. 64,
ANAMOSA, IOWA,
52205 (319)462-3785