

THIS IS NOT A CERTIFICATION

JONES COUNTY ENGINEER'S OFFICE, 19501 HWY. 64, ANAMOSA, IOWA, 52205 (319)462-3785

UNITED STATES PUBLIC LAND SURVEY CORNER CERTIFICATE

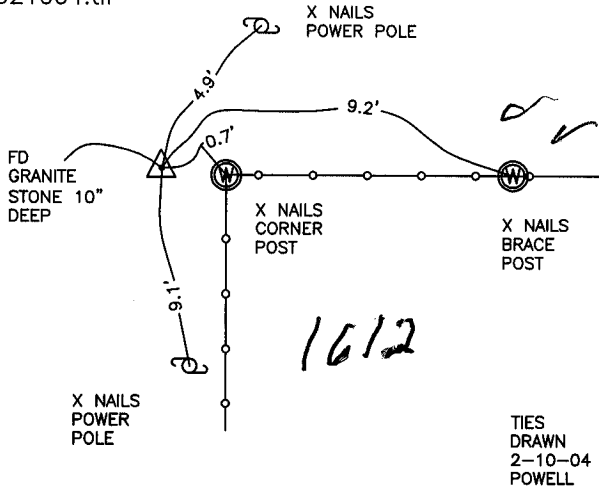
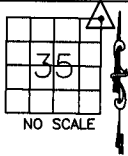
LAND SURVEY MONUMENTS SITUATED IN SECTION 35, TOWNSHIP 84
NORTH, RANGE 2 WEST OF THE 5TH P.M., JONES COUNTY, IOWA

CORNERS TO BE INDEXED

CORNER SECTION TOWNSHIP RANGE
NE 35 84N 2W

OFFICE FILE NO.

84235e_021004.tif



1612

TIES
DRAWN
2-10-04
POWELL

PREVIOUSLY RECORDED IN BOOK NA, PAGE NA
MONUMENT DESCRIPTION AND HOW ESTABLISHED _____

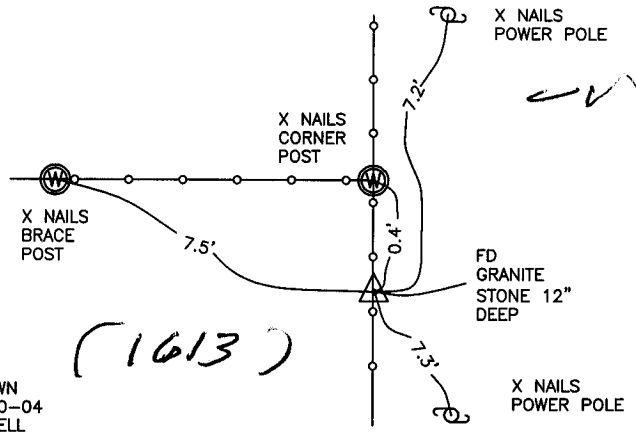
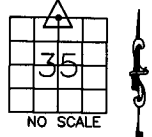
TIES ON RECORD IN JONES CO. ENGINEER'S OFFICE, REF: TO
IDOT PROJECT # F-64-1(3), DATED 7-23-1976. FOUND
4"x6"x9" WHITE GRANITE STONE BURIED 10".

CORNERS TO BE INDEXED

CORNER SECTION TOWNSHIP RANGE
N1/4 35 84N 2W

OFFICE FILE NO.

84235c_021004.tif



(1613)

TIES
DRAWN
2-10-04
POWELL

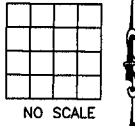
PREVIOUSLY RECORDED IN BOOK NA, PAGE NA
MONUMENT DESCRIPTION AND HOW ESTABLISHED _____

TIES ON RECORD IN JONES CO. ENGINEER'S OFFICE, REF: TO
IDOT PROJECT # F-64-1(3). FOUND 4"x5"x7" WHITE GRANITE
STONE BURIED 12".

CORNERS TO BE INDEXED

CORNER SECTION TOWNSHIP RANGE

OFFICE FILE NO.

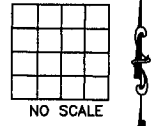


PREVIOUSLY RECORDED IN BOOK _____, PAGE _____
MONUMENT DESCRIPTION AND HOW ESTABLISHED _____

CORNERS TO BE INDEXED

CORNER SECTION TOWNSHIP RANGE

OFFICE FILE NO.



PREVIOUSLY RECORDED IN BOOK _____, PAGE _____
MONUMENT DESCRIPTION AND HOW ESTABLISHED _____

~~I hereby declare that this plat, survey or report
was made by me or under my direct personal
supervision and that I am a duly registered Land
Surveyor under the laws of the State of Iowa.~~

Signed: _____

SEAL

JONES COUNTY
ENGINEER'S OFFICE

19501 HWY. 64,
ANAMOSA, IOWA,
52205 (319)462-3785

AY