

Instrument #: 2022-1649  
 06/06/2022 09:21:25 AM Total Pages: 1  
 ZSC SECTION CORNER CERTIFICATE  
 Recording Fee: \$7.00 Transfer Tax: \$0  
 Sheri L. Jones, Recorder, Jones County Iowa



PREPARED BY: RANDALL L. RATTENBORG 105 WEST MAIN STREET MANCHESTER, IA 52057, 563-927-2434

# UNITED STATES PUBLIC LAND SURVEY CORNER CERTIFICATE

Land Survey Monuments situated in Section 31, Township 84 North, Range 1 West of the Fifth Principal Meridian,  
Jones County, Iowa.

Previously recorded in County Recorder's Office in INSTRUMENT #2017-2083  
(book, page, document number, etc.)

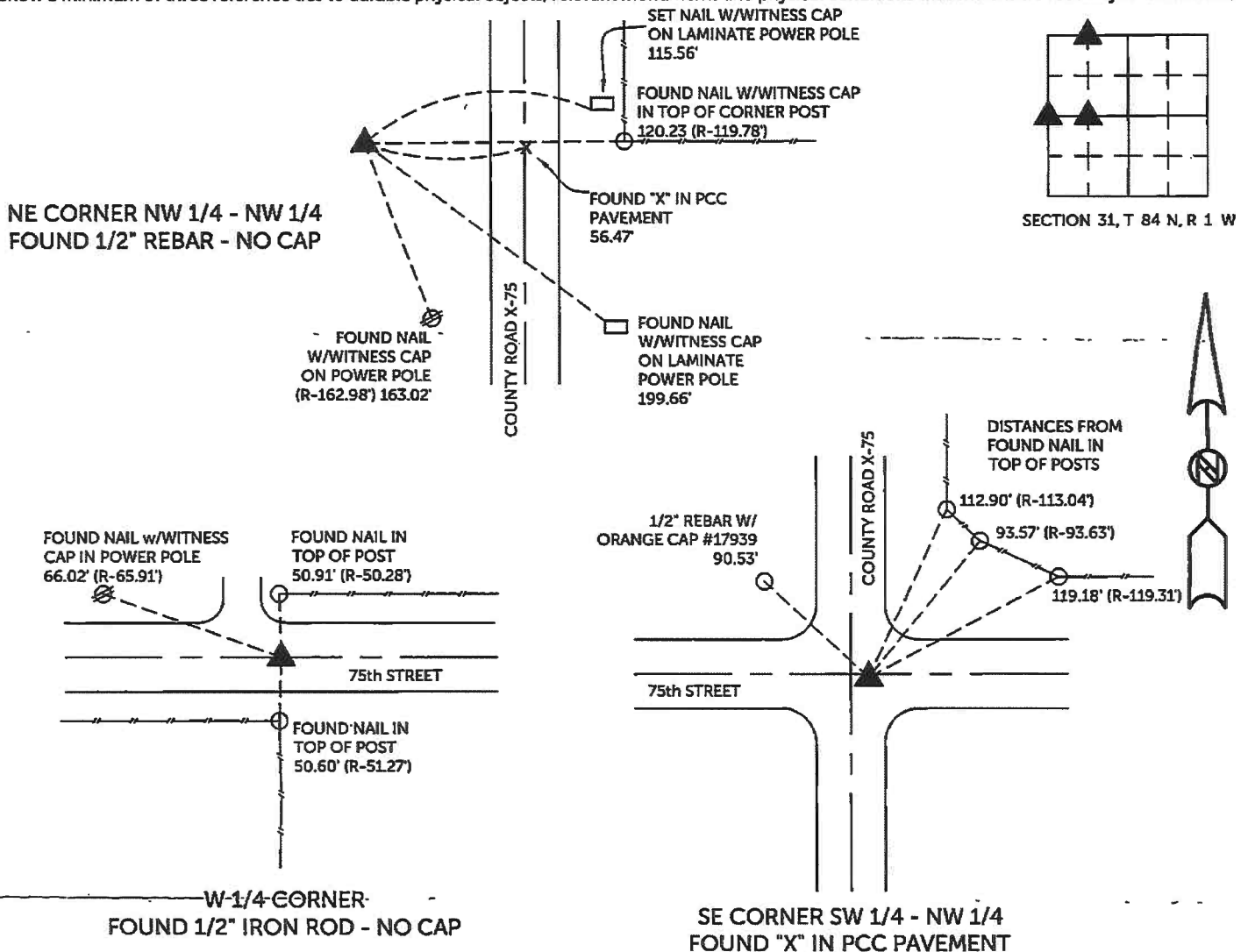
W 1/4 CORNER, Found 1/2" iron rod 12" below surface. This corner being re-tied due to missing reference objects.

SE CORNER SW 1/4 - NW 1/4, Found cut "X" in PCC pavement.

NE CORNER NW 1/4 - NW 1/4, Found 1/2" rebar - no cap.

## PLAN VIEW

(Show a minimum of three reference ties to durable physical objects, relevant monuments and physical conditions that will enable recovery of the corner.)



TIES ARE TO PLAT PARCEL 2022-45  
 IN SECTION 31, T 84 N, R 1 W

BURRINGTON GROUP, INC. PROJECT NO. 22-034

I HEREBY CERTIFY THAT THIS LAND SURVEYING DOCUMENT WAS PREPARED AND THE RELATED SURVEY WORK WAS PERFORMED BY ME OR UNDER MY DIRECT PERSONAL SUPERVISION AND THAT I AM A DULY LICENSED PROFESSIONAL LAND SURVEYOR UNDER THE LAWS OF THE STATE OF IOWA.

SEAL COVERS THIS SHEET ONLY

*[Signature]* 5/27/2022  
 Randall L. Rattenborg, P.L.S. License #17939 Date  
 My license renewal date is December 31, 2023  
 List Corners to be Indexed: Section Township Range  
 W 1/4 Corner 31 T 84N R 1 W  
 SE CORNER SW 1/4 - NW 1/4  
 NE CORNER NW 1/4 - NW 1/4



**BURRINGTON GROUP, INC.**  
 Civil Engineering | Land Surveying  
 105 W. Main Street Manchester, Iowa 52057

Instrument #: 2017-2083  
 08/07/2017 10:58:17 AM Total Pages: 1  
 ZSC SECTION CORNER CERTIFICATE  
 Recording Fee: \$7.00 Transfer Tax: \$0  
 Sheri L. Jones, Recorder, Jones County Iowa



PREPARED BY: RANDALL L. RATTENBORG 105 WEST MAIN STREET MANCHESTER, IA 52057, 563-927-2434

# UNITED STATES PUBLIC LAND SURVEY CORNER CERTIFICATE

Land Survey Monuments situated in Section 31, Township 84 North, Range 1 West of the Fifth Principal Meridian,  
Jones County, Iowa.

Previously recorded in County Recorder's Office in W 1/4 CORNER - BOOK 370, PAGE 267  
(book, page, document number, etc.)

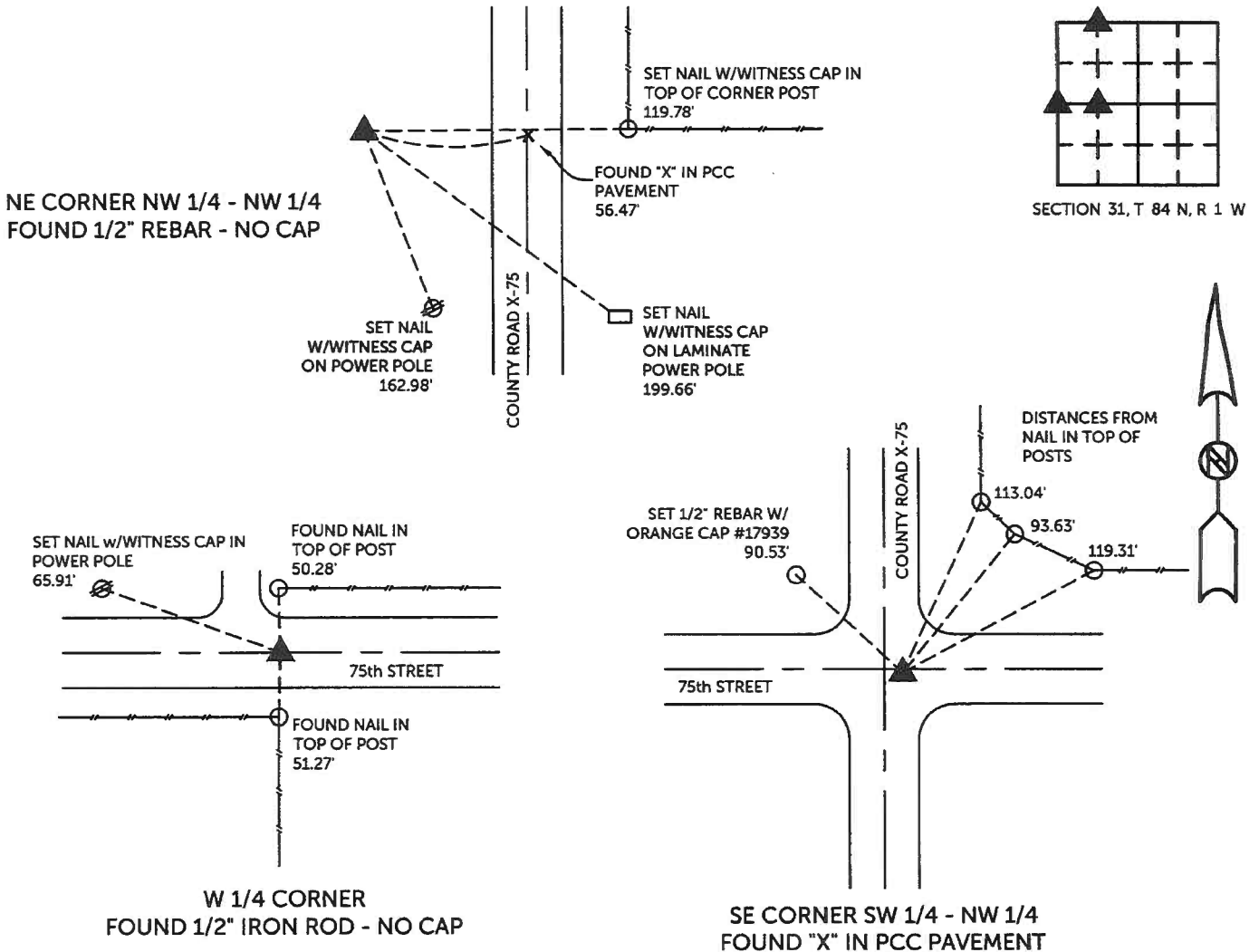
W 1/4 CORNER, Found 1/2" iron rod 12" below surface. This corner being re-tied due to missing reference objects.

SE Corner SW 1/4 - NW 1/4, Found cut "X" in PCC pavement.

NE CORNER NW 1/4 - NW 1/4, Found 1/2" rebar - no cap as shown in Plat of Survey of Parcel 97-49 recorded in Book 427, Page 86.

## PLAN VIEW

(Show a minimum of three reference ties to durable physical objects, relevant monuments and physical conditions that will enable recovery of the corner.)



TIES ARE TO PLAT PARCEL 2017-56  
 IN SECTION 31, T 84 N, R 1 W

BURRINGTON GROUP, INC. PROJECT NO.17-104

I HEREBY CERTIFY THAT THIS LAND SURVEYING DOCUMENT WAS PREPARED AND THE RELATED SURVEY WORK WAS PERFORMED BY ME OR UNDER MY DIRECT PERSONAL SUPERVISION AND THAT I AM A DULY LICENSED PROFESSIONAL LAND SURVEYOR UNDER THE LAWS OF THE STATE OF IOWA.

*[Signature]* 8/3/17  
 Randall L. Rattenborg, P.L.S. License #17939 Date  
 My license renewal date is December 31, 2017

List Corners to be Indexed:	Section	Township	Range
W 1/4 Corner	31	T 84N	R 1 W
SE CORNER SW 1/4 - NW 1/4			
NE CORNER NW 1/4 - NW 1/4			

SEAL COVERS THIS SHEET ONLY



**BURRINGTON GROUP, INC.**  
 Civil Engineering | Land Surveying  
 105 W. Main Street Manchester, Iowa 52057

# UNITED STATES PUBLIC LAND SURVEY CORNER CERTIFICATE

OF

Land Survey Monuments situated in Section 31, Township 84N, Range 1W, of the Fifth Principal Meridian, JONES County, Iowa. Previously recorded in N/A in County Recorder's Office.

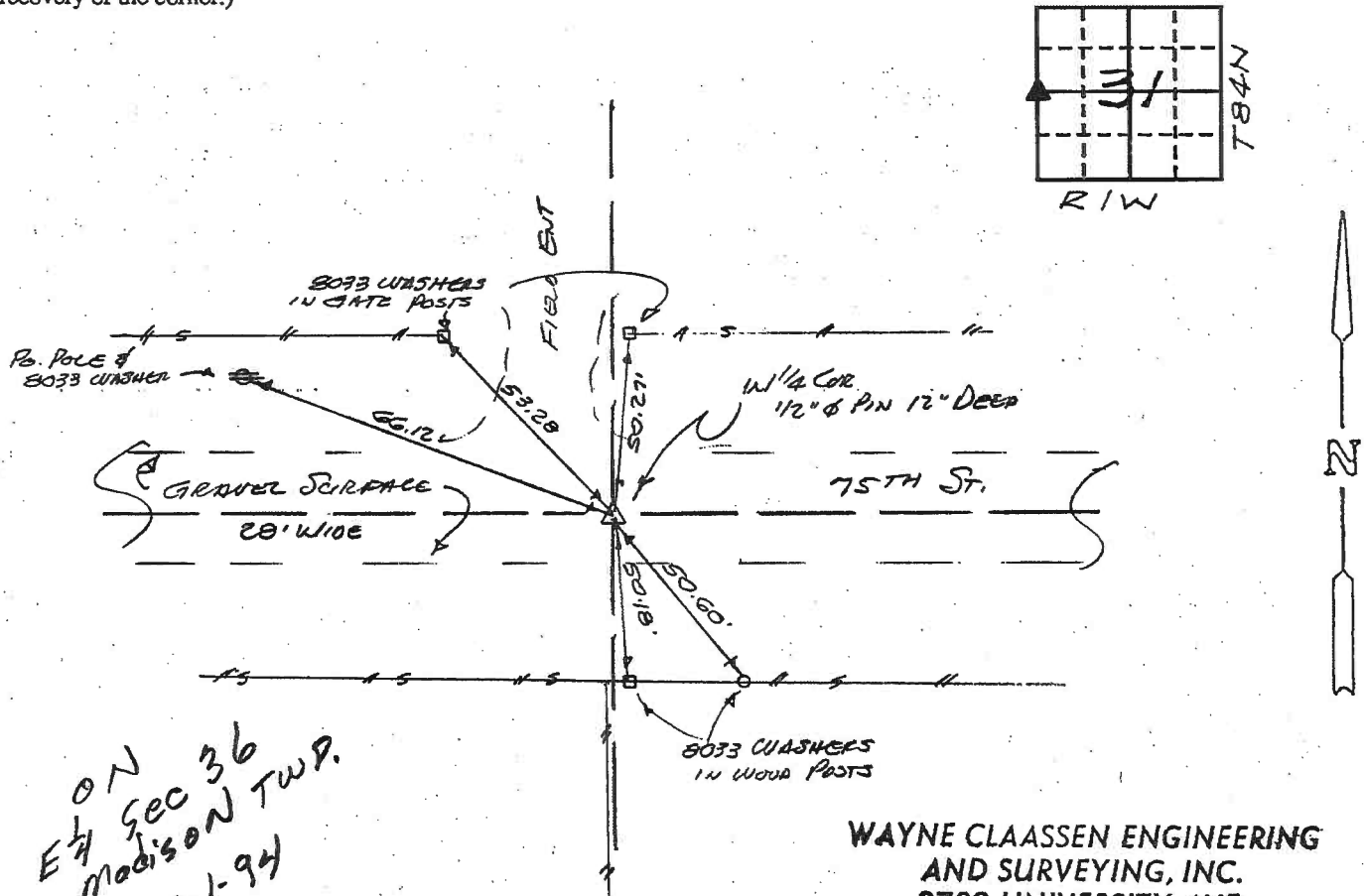
(book, page, document number, etc.)

(Show reason for preparing this certificate, the evidence and detailed procedures used in establishing the corner positions and monumentation found or placed.)

Monument Description and Remarks: FOUND 1/2" Ø SOLID PIN 12" DEEP PER JONES COUNTY TIES OF 11-27-79, REF. BOOK JONES 276-3.

## PLAN - VIEW

(Show a minimum of three reference ties to durable physical objects, relevant monuments and physical conditions that will enable recovery of the corner.)



*ON Sec 36 Madison TWP. 1-1-94*

**WAYNE CLAASSEN ENGINEERING AND SURVEYING, INC.**  
 2709 UNIVERSITY AVE.  
 P.O. BOX 898  
 WATERLOO, IA 50704

439-10

I hereby certify that the survey work was completed and this certificate was prepared by me or under my direct personal supervision and that I am a duly registered land surveyor under the laws of the state of Iowa.

Signature: F. William King

Name typed or printed: F. WILLIAM KING

Date: 11-5-94 Reg. No. 8033

Corners	List Corners to be Indexed		
	Section	Twp	Range
W1/4	31	84N	1W

SEAL

