

Instrument #: 2022-2115
 07/18/2022 09:17:03 AM Total Pages: 1
 ZSC SECTION CORNER CERTIFICATE
 Recording Fee: \$7.00 Transfer Tax: \$0
 Sheri L. Jones, Recorder, Jones County Iowa



PREPARED BY: RANDALL L. RATTENBORG 105 WEST MAIN STREET MANCHESTER, IA 52057, 563-927-2434

UNITED STATES PUBLIC LAND SURVEY CORNER CERTIFICATE

Land Survey Monuments situated in Section 31, Township 84 North, Range 1 West of the Fifth Principal Meridian,
Jones County, Iowa.

Previously recorded in County Recorder's Office in NOT RECORDED
(book, page, document number, etc.)

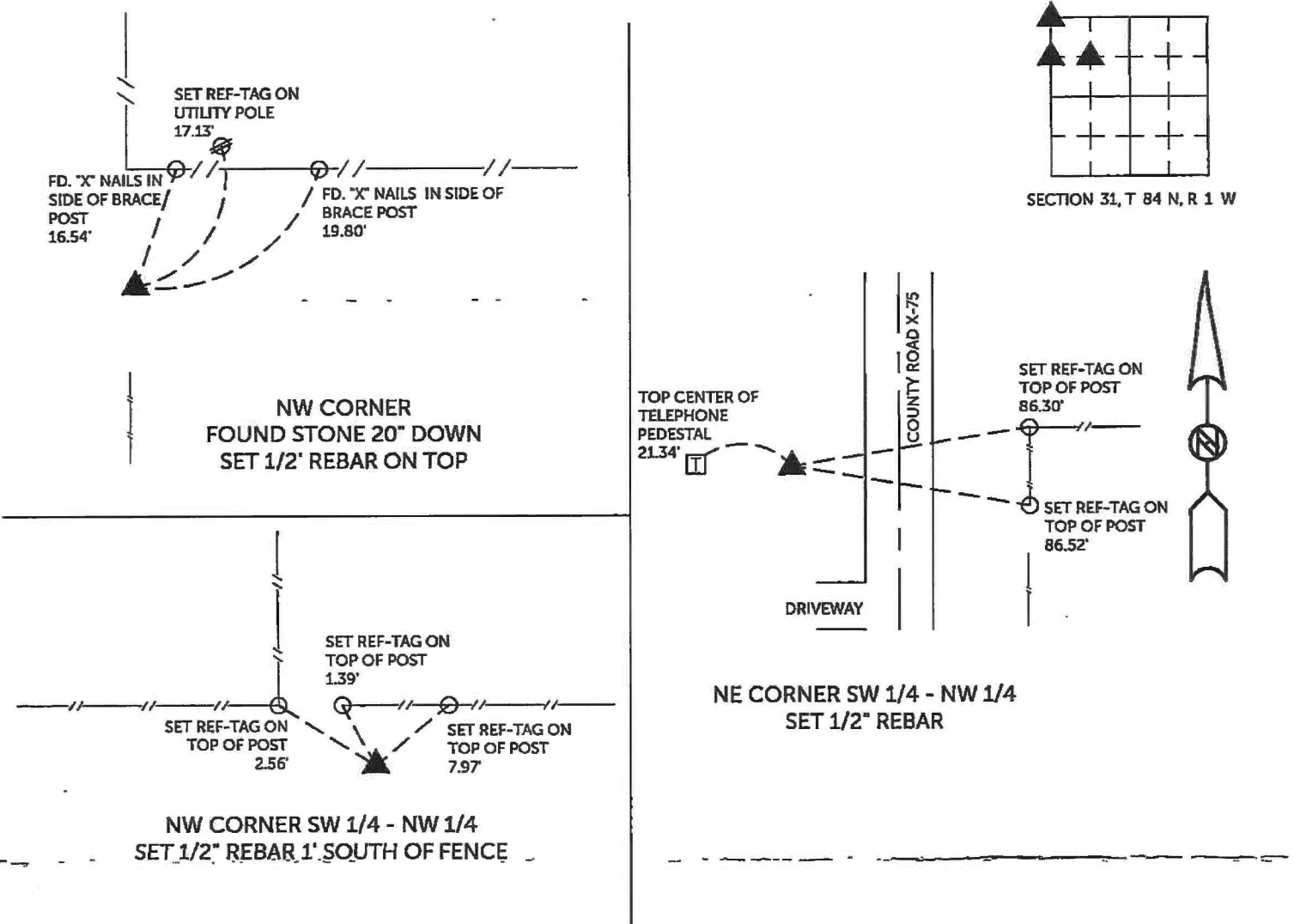
NW Corner: Found blue granite stone as per document in Jones County Engineers office. Stone was buried 20" below ground surface. Set 1/2" Rebar w/orange cap #17939 above stone.

NE Corner SW 1/4 - NW 1/4: Set 1/2" rebar w/orange cap #17939 at mathematical location between NE corner NW 1/4 - NW 1/4 and SE corner SW 1/4 - NW 1/4.

NW Corner SW 1/4 - NW 1/4: Set 1/2" rebar w/orange cap #17939 at mathematical location between NW corner and W 1/4 corner.

PLAN VIEW

(Show a minimum of three reference ties to durable physical objects, relevant monuments and physical conditions that will enable recovery of the corner.)



TIES ARE TO PLAT PARCEL 2022-45
 IN SECTION 31, T 84 N, R 1 W

BURRINGTON GROUP, INC. PROJECT NO. 22-078

I HEREBY CERTIFY THAT THIS LAND SURVEYING DOCUMENT WAS PREPARED AND THE RELATED SURVEY WORK WAS PERFORMED BY ME OR UNDER MY DIRECT PERSONAL SUPERVISION AND THAT I AM A DULY LICENSED PROFESSIONAL LAND SURVEYOR UNDER THE LAWS OF THE STATE OF IOWA.

SEAL COVERS THIS SHEET ONLY

[Signature] 7/12/2022
 Randall L. Rattenborg, P.L.S. License #17939 Date
 My license renewal date is December 31, 2023
 List Corners to be Indexed: Section Township Range
 NW CORNER 31 T 84N R 1 W
 NE CORNER SW 1/4 - NW 1/4
 NW CORNER SW 1/4 - NW 1/4



BURRINGTON GROUP, INC.
 Civil Engineering | Land Surveying
 105 W. Main Street Manchester, Iowa 52057