

2001 2749
 FILED
 RECORDERS OFFICE
 JONES COUNTY IOWA

01 AUG -6 AM 8:47

MARIE KRUTZFIELD 6.00Pd

RECORDED

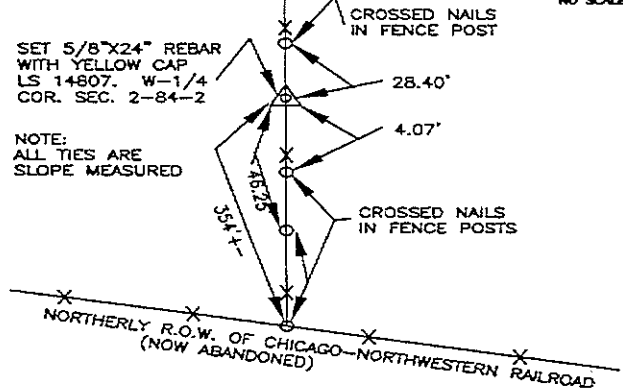
J.D. TJEPKES, 23428 RIDGE RD. ANAMOSA, IOWA, 52205 (319)462-6067

UNITED STATES PUBLIC LAND SURVEY CORNER CERTIFICATE

LAND SURVEY MONUMENTS SITUATED IN SECTION 2, TOWNSHIP 84
 NORTH, RANGE 2 WEST OF THE 5TH P.M., JONES COUNTY, IOWA

CORNERS TO BE INDEXED

CORNER	SECTION	TOWNSHIP	RANGE
W-1/4	2	84N	2W



NOTE:
 ALL TIES ARE
 SLOPE MEASURED

PREVIOUSLY RECORDED IN BOOK N/A, PAGE N/A
 MONUMENT DESCRIPTION AND HOW ESTABLISHED SET 5/8\"X24\"
REBAR WITH YELLOW CAP LS 14807 IN FENCE LINE AT PROPORTION-
ATE DISTANCE FROM SW. COR. SEC. 2 TO THE NW. COR. SEC. 2.
FENCE LINE FIT THE STATIONING PER CHICAGO-NORTHWESTERN RAIL-
ROAD (NOW ABANDONED), RECORDED IN VOLUME 1, PAGE 475, JONES
COUNTY RECORDER'S OFFICE, W-1/4 SEC. 2, T84N, R2W, 5TH P.M.

CORNERS TO BE INDEXED

CORNER	SECTION	TOWNSHIP	RANGE



PREVIOUSLY RECORDED IN BOOK _____, PAGE _____
 MONUMENT DESCRIPTION AND HOW ESTABLISHED _____

CORNERS TO BE INDEXED

CORNER	SECTION	TOWNSHIP	RANGE



PREVIOUSLY RECORDED IN BOOK _____, PAGE _____
 MONUMENT DESCRIPTION AND HOW ESTABLISHED _____

CORNERS TO BE INDEXED

CORNER	SECTION	TOWNSHIP	RANGE



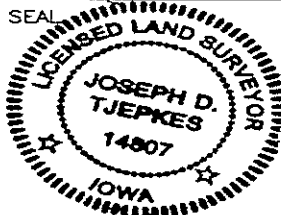
PREVIOUSLY RECORDED IN BOOK _____, PAGE _____
 MONUMENT DESCRIPTION AND HOW ESTABLISHED _____

I hereby declare that this plat, survey or report was made by me or under my direct personal supervision and that I am a duly registered Land Surveyor under the laws of the State of Iowa.

Signed:

J.D. Tjepkes 7-30-01

Joseph D. Tjepkes L.S. Iowa Reg. No. 14807
 My Registration Renewal Date is December 31, 2002



J.D. TJEPKES LS 14807
 23428 RIDGE ROAD
 ANAMOSA, IOWA 52205