

2006 0027

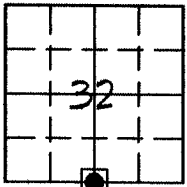
FILED
RECORDERS OFFICE
JONES COUNTY IOWA

06 JAN -3 PM 12: 50

MARIE KRUTZFIELD
RECORDER 7.00 Pd

Prepared by: Richard M. Kordick, P.E., L.S., 120 East Main, Suite D, Anamosa, IA 52205 Phone: (319) 462-4498

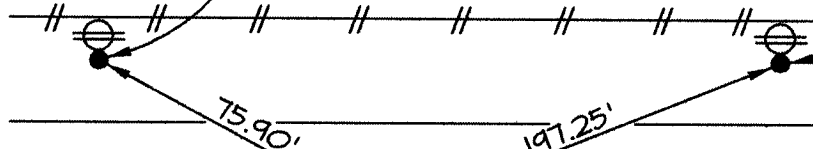
U.S. PUBLIC LAND SURVEY CORNER CERTIFICATE



32-85N-2W
Jones County
SCOTCH GROVE
Township

Set 1/2" rebar, 4" high
on S. side of power pole

Set 1/2" rebar, 4" high
on S. side of power pole



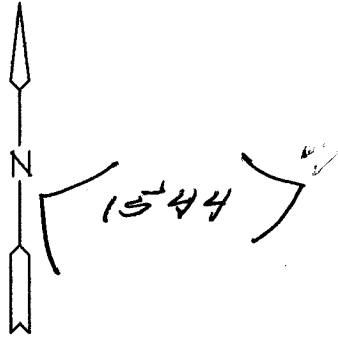
Found 5/8" rebar, 3" deep

19.60'

S 1/4 Corner
Section 32-85-2
Found 5/8" rebar, 3" deep

130th Street

53.04'



Set 1/2" rebar, 4" high
on N. side of power pole

85232W-12295N Plan-View No Scale

Section corner location: S 1/4 Corner, Section 32-85-2

Reason for corner tie:

- A) There is no certificate for the corner on file with the recorder.
- B) Corner position differs from previously recorded certificate recorded in book , page
- C) Corner monument was replaced or modified.
- D) Reference ties in previously recorded certificate recorded in book , page are incorrect or missing.

Research at the recorder's office, auditor's office, and engineer's office revealed the following:
No information was found.

Field search performed was as follows:
Field search was performed with a metal detector and excavation.

Monument found or set:
A 5/8" rebar, 3" deep, was found and used as the corner.



I hereby certify that this land surveying document was prepared and the related survey work was performed by me or under my direct personal supervision and that I am a duly licensed Land Surveyor under the laws of

LEGEND:

Section Corner as noted

THIS IS NOT A CERTIFICATION

JONES COUNTY ENGINEER'S OFFICE, 19501 HWY. 64, ANAMOSA, IOWA, 52205 (319)462-3785

UNITED STATES PUBLIC LAND SURVEY CORNER CERTIFICATE

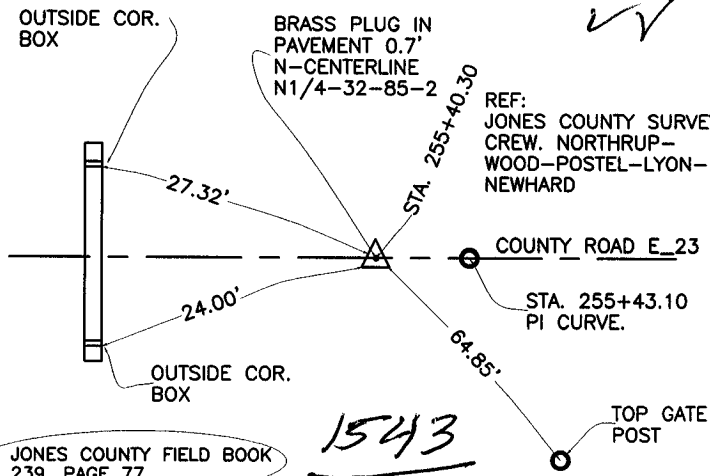
LAND SURVEY MONUMENTS SITUATED IN SECTION 32, TOWNSHIP 85
NORTH, RANGE 2 WEST OF THE 5TH P.M., JONES COUNTY, IOWA

CORNERS TO BE INDEXED

CORNER SECTION TOWNSHIP RANGE
NORTH 1/4 32 85N 2W

OFFICE FILE NO.

85232c_123004.tif



JONES COUNTY FIELD BOOK
239, PAGE 77

1543

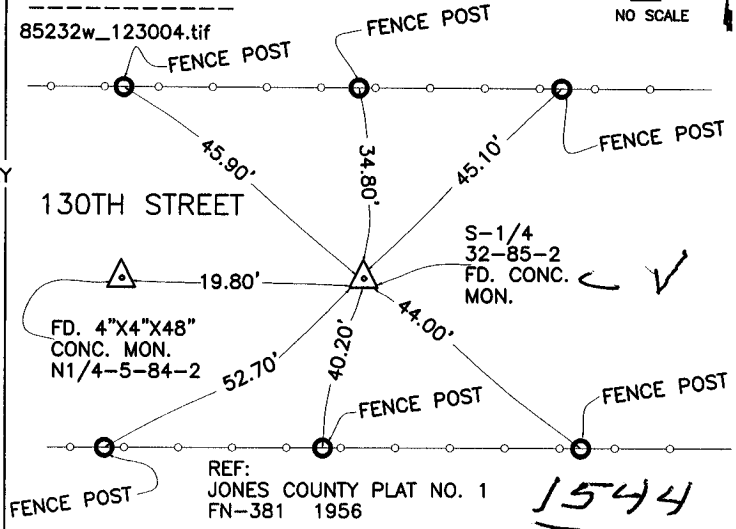
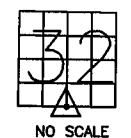
PREVIOUSLY RECORDED IN BOOK _____, PAGE _____
MONUMENT DESCRIPTION AND HOW ESTABLISHED SET
BRASS PLUG IN PAVEMENT IN 1972. TIES AS INDICATED
MONUMENT IN 1972. TIES AS INDICATED. NORTH QUARTER CORNER
SECTION 31, TOWNSHIP 85 NORTH, RANGE 2 WEST OF THE 5TH
PRINCIPAL MERIDIAN, JONES COUNTY, IOWA.

CORNERS TO BE INDEXED

CORNER SECTION TOWNSHIP RANGE
S1/4 32 85N 2W

OFFICE FILE NO.

85232w_123004.tif



S-1/4
32-85-2
FD. CONC.
MON.

REF:
JONES COUNTY PLAT NO. 1
FN-381 1956

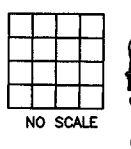
1544

PREVIOUSLY RECORDED IN BOOK _____, PAGE _____
MONUMENT DESCRIPTION AND HOW ESTABLISHED FOUND
4"X4"X48" CONCRETE MONUMENT AT THE SOUTH QUARTER CORNER
SECTION 32, TOWNSHIP 85 NORTH, RANGE 2 WEST OF THE 5TH
PRINCIPAL MERIDIAN, JONES COUNTY, IOWA.
SET TIES AS INDICATED.

CORNERS TO BE INDEXED

CORNER SECTION TOWNSHIP RANGE

OFFICE FILE NO.



CORNERS TO BE INDEXED

CORNER SECTION TOWNSHIP RANGE

OFFICE FILE NO.

