

2006 0026

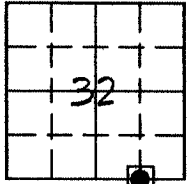
FILED
RECORDERS OFFICE
JONES COUNTY IOWA

06 JAN -3 PM 12:48

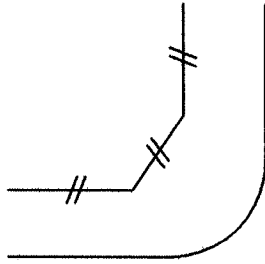
MARIE KRUTZFIELD
RECORDER 7.00 Pd

Prepared by: Richard M. Kordick, P.E., L.S., 120 East Main, Suite D, Anamosa, IA 52205 Phone: (319) 462-4498

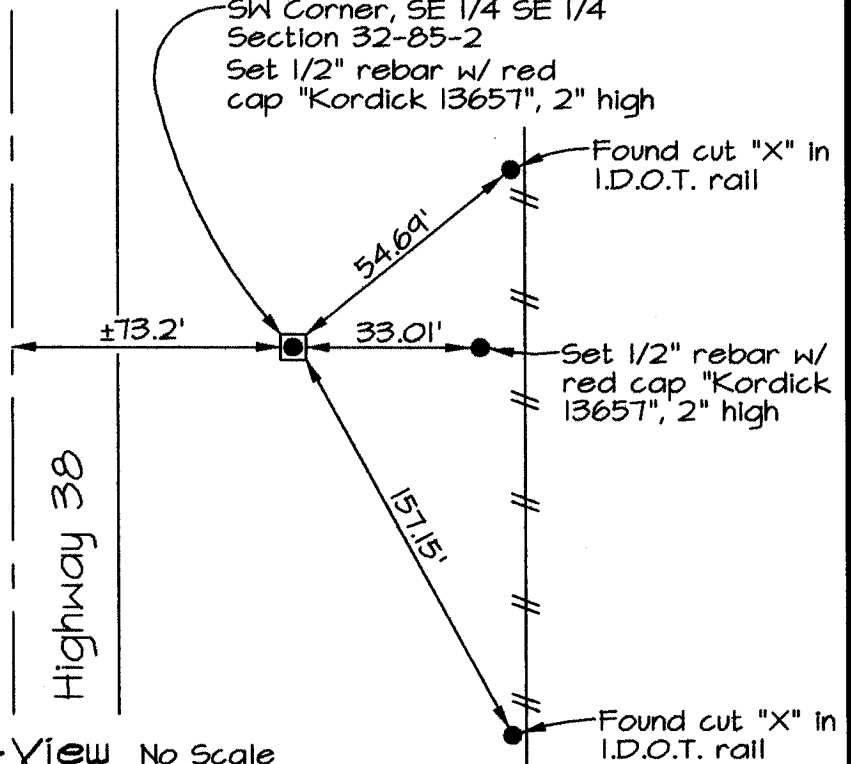
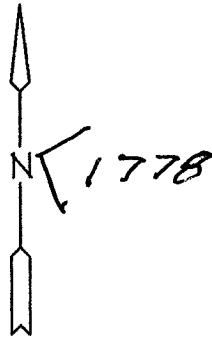
U.S. PUBLIC LAND SURVEY CORNER CERTIFICATE



32-85N-2W
Jones County
SCOTCH GROVE
Township



130th Street



85-232x-122015.716 Plan-View No Scale

Section corner location: SW Corner, SE 1/4 SE 1/4 Section 32-85-2

Reason for corner tie:

- A) There is no certificate for the corner on file with the recorder.
- B) Corner position differs from previously recorded certificate recorded in book , page
- C) Corner monument was replaced or modified.
- D) Reference ties in previously recorded certificate recorded in book , page are incorrect or missing.

Research at the recorder's office, auditor's office, and engineer's office revealed the following:
No information was found.

Field search performed was as follows:

Field search was performed with a metal detector, excavation, and probing. Nothing was found.

Monument found or set:

A 1/2" rebar with red cap "Kordick 13657" was set, 2" high, equidistance on-line from the S 1/4 to the SE Corner.



I hereby certify that this land surveying document was prepared and the related survey work was performed by me or under my direct personal supervision and that I am a duly licensed Land Surveyor under the laws of

LEGEND:

- Section Corner as noted