

Jones County Marie Krutzfield Recorder  
 Fee Book 2012 1971  
 07/11/2012 @0300PM # Pages 1  
 ZSC SEC COR CERT  
 Total Fees: \$7.00

Prepared by Wm. Burger Land Surveyor 510 3rd Street West Court, Worthington, Iowa Phone 563 - 855 2028

**UNITED STATES PUBLIC LAND SURVEY CORNER CERTIFICATE**

Land Survey Monuments situated in Section 8, Township 84N, Range 2W, of the Fifth Principal Meridian, Jones County, Iowa. Previously recorded in N/A in the Office of the County Recorder

Monument Description and Remarks: (No Corner Certificates found at the County Recorders Office)

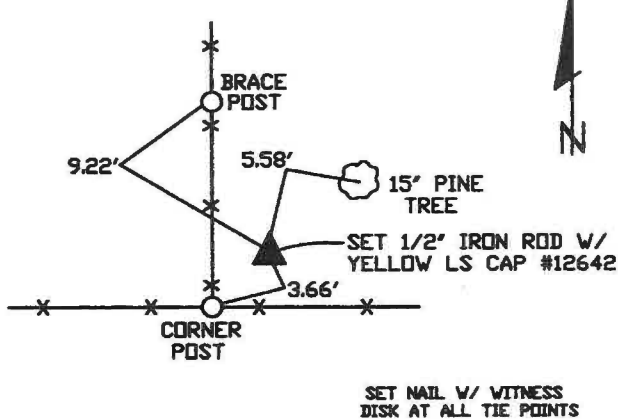
NW CORNER SW1/4 SE1/4 - SET 1/2" IRON ROD W/ YELLOW LS CAP #12642 - SET ON LINE AND MIDWAY BETWEEN THE S1/4 CORNER AND THE CENTER OF SECTION

NE CORNER SW1/4 SE1/4 - SET 1/2" IRON ROD W/ YELLOW LS CAP #12642 - RUN STRAIGHT LINES FROM OPPOSITE 1/4 1/4 CORNERS AND SET AT POINT OF INTERSECTION

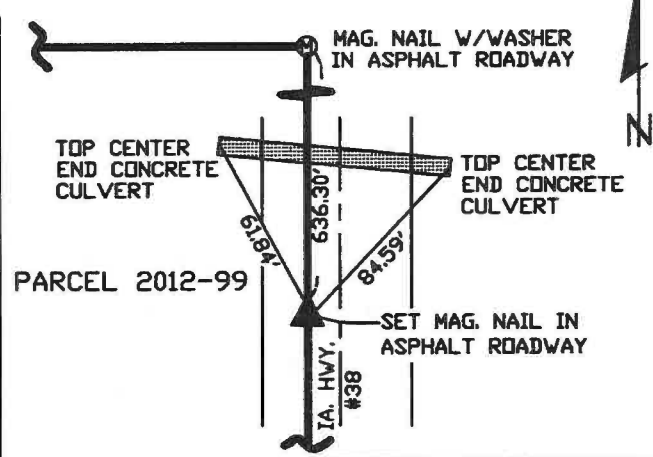
SE CORNER SW1/4 SE1/4 - SET 1/2" IRON ROD W/ YELLOW LS CAP #12642 - SET ON LINE AND MIDWAY BETWEEN THE S1/4 CORNER AND THE SE CORNER

**PLAN VIEW**

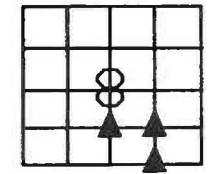
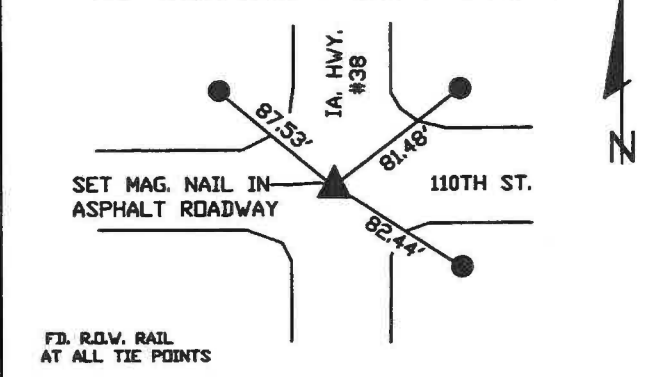
NW CORNER SW1/4 SE1/4



NE CORNER SW1/4 SE1/4



SE CORNER SW1/4 SE1/4



SEC. 8 TWP. 84N RANGE 2W

**CORNERS TO BE INDEXED**

NW CORNER SW1/4 SE1/4	8	84N	2W
NE CORNER SW1/4 SE1/4	8	84N	2W
SE CORNER SW1/4 SE1/4	8	84N	2W



I hereby certify that this land surveying document was prepared and related survey work was performed by me or under my direct personal supervision and that I am a duly licensed Land Surveyor under the laws of the State of Iowa.

*William H. Burger* 7/9/12  
 William H. Burger Date  
 License number 12642  
 My license renewal date is December 31, 2012  
 Pages or Sheets covered by this seal: Sheet 1 of 1