

2003 3744

FILED
RECORDERS OFFICE
JONES COUNTY IOWA

03 AUG -6 AM 9:03

MARIE KRUTZFIELD
RECORDER *No Fee*

J.D. Tjepkes, LS. JONES COUNTY ENGINEER'S OFFICE, 19501 HWY. 64, ANAMOSA, IOWA, 52205 (319)462-3785

UNITED STATES PUBLIC LAND SURVEY CORNER CERTIFICATE

LAND SURVEY MONUMENTS SITUATED IN SECTION 9, TOWNSHIP 84
NORTH, RANGE 2 WEST OF THE 5TH P.M., JONES COUNTY, IOWA

CORNERS TO BE INDEXED

CORNER	SECTION	TOWNSHIP	RANGE
E-1/4	9	84N	2W

OFFICE FILE NO. 842090-071503.jpg

E1/4-9-84-2
SET 5/8"x24"
REBAR W/ORANGE CAP
LS 14807

1334

FD 1" IRON PIN
(OLD TIE)

52.00'

82.95'

100TH AVENUE

52.28'

43.43'

94.05' (OLD TIE)

SET PLASTIC SURVEY DISK IN POWER POLE

HO # 11484

DATE OF FIELD WORK: 6-11-03

ENGINEER'S OFFICE

PREVIOUSLY RECORDED IN BOOK _____, PAGE _____
MONUMENT DESCRIPTION AND HOW ESTABLISHED SET 5/8"x24"
REBAR WITH ORANGE CAP LS 14807 PER TIES COUNTY PROJ. #
105, BOOK 39(2). TOP BURIED 4" BELOW SURFACE. EAST QUARTER
CORNER SECTION 9, TOWNSHIP 84 NORTH, RANGE 2 WEST, 5TH
PRINCIPAL MERIDIAN, JONES COUNTY, IOWA.

CORNERS TO BE INDEXED

CORNER	SECTION	TOWNSHIP	RANGE
NORTHEAST	9	84N	2W

OFFICE FILE NO. 842090-071503.jpg

TEL PED

SET PLASTIC SURVEY DISK IN WOOD POST

69.75'

71.22'

4.2'

CL COUNTY RD. E-29

FD. BRASS PLUG
4.2' SOUTH CL
PAVEMENT

100TH AVENUE

73.00'

SET PLASTIC SURVEY DISK IN WOOD POST

108

DATE OF FIELD WORK: 6-11-03

ENGINEER'S OFFICE

PREVIOUSLY RECORDED IN BOOK _____, PAGE _____
MONUMENT DESCRIPTION AND HOW ESTABLISHED FD. BRASS PLUG
4.2' SOUTH CL COUNTY ROAD E-29 PER COUNTY ROAD PLANS
& LS 8860. SET REFERENCE POINTS AND TIED OUT AS INDICATED.
NORTHEAST CORNER SECTION 9, TOWNSHIP 84 NORTH, RANGE 2
WEST, 5TH PRINCIPAL MERIDIAN, JONES COUNTY, IOWA.

CORNERS TO BE INDEXED

CORNER	SECTION	TOWNSHIP	RANGE

OFFICE FILE NO. _____

NO SCALE

PREVIOUSLY RECORDED IN BOOK _____, PAGE _____
MONUMENT DESCRIPTION AND HOW ESTABLISHED _____

CORNERS TO BE INDEXED

CORNER	SECTION	TOWNSHIP	RANGE

OFFICE FILE NO. _____

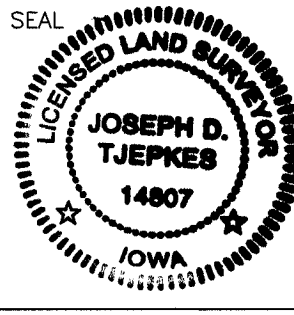
NO SCALE

PREVIOUSLY RECORDED IN BOOK _____, PAGE _____
MONUMENT DESCRIPTION AND HOW ESTABLISHED _____

I hereby declare that this plat, survey or report was made by me or under my direct personal supervision and that I am a duly registered Land Surveyor under the laws of the State of Iowa.

Signed: *[Signature]* 8-05-03

Joseph D. Tjepkes L.S. Iowa Reg. No. 14807
My Registration Renewal Date is December 31, 2004



J.D. Tjepkes LS 14807
JONES COUNTY
ENGINEER'S OFFICE

19501 HWY. 64,
ANAMOSA, IOWA,
52205 (319)462-3785

UNITED STATES PUBLIC LAND SURVEY CORNER CERTIFICATE

OF

Land Survey Monuments situated in Section 9, Township 84 North, Range 2 West, of the Fifth Principal Meridian, Jones County, Iowa. Previously recorded in _____ in County Recorder's Office.

(book, page, document number, etc.)

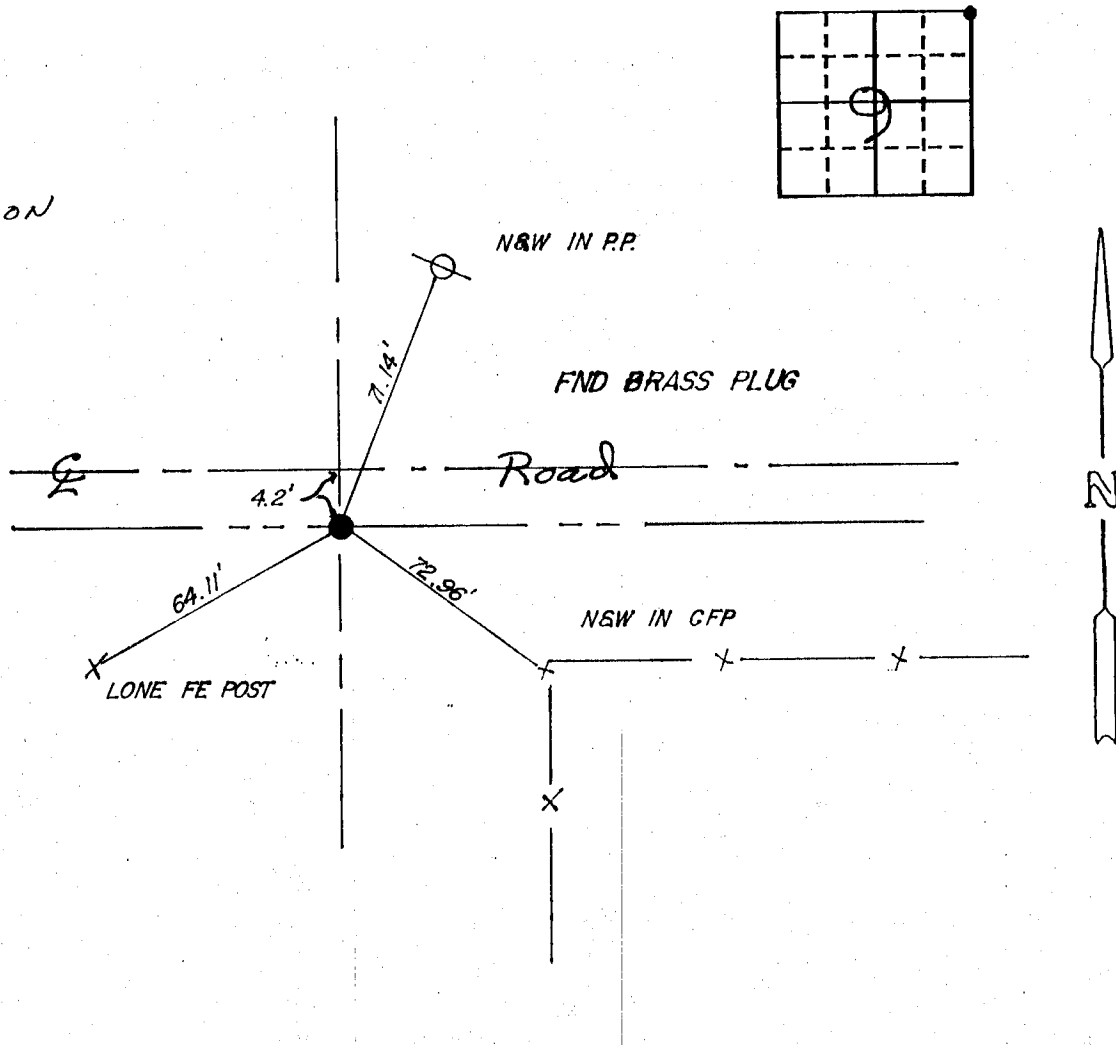
(Show reason for preparing this certificate, the evidence and detailed procedures used in establishing the corner positions and monumentation found or placed.)

Monument Description and Remarks: Found Brass Plug @ NE Cor.

Certificate filed to establish a record for the corner used in a survey for Iowa East Cellular Telephone Company.

PLAN - VIEW

(Show a minimum of three reference ties to durable physical objects, relevant monuments and physical conditions that will enable recovery of the corner.)



ON CARD
12-6-90 MADISON
M.S. NE. 9

I hereby certify that the survey work was completed and this certificate was prepared by me or under my direct personal supervision and that I am a duly registered land surveyor under the laws of the state of Iowa.

Signature: JERRY D. ROGERS
Name typed or printed:

Date: 11-8-90 Reg. No. 8860

Corners	List Corners to be Indexed		
	Section	Twp	Range
NE	9	84N	2W



SEAL