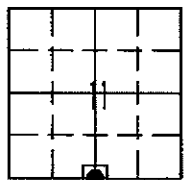


MARIE KRUTZFIELD, RECORDER
 JONES COUNTY, IOWA

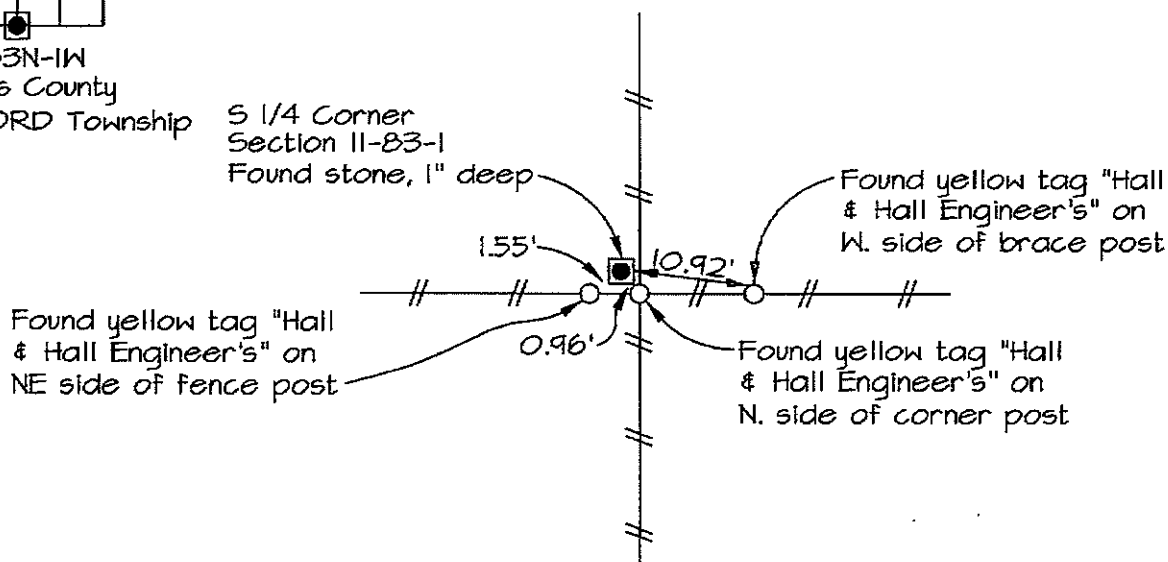
Prepared by: Richard M. Kordick, P.E., L.S., 120 East Main, Suite D, Anamosa, IA 52205 Phone: (319) 462-4498

U.S. PUBLIC LAND SURVEY CORNER CERTIFICATE



11-83N-1W
 Jones County
 OXFORD Township

S 1/4 Corner
 Section 11-83-1
 Found stone, 1" deep



Plan-View No Scale

Section corner location: S 1/4 Corner, Section 11-83-1

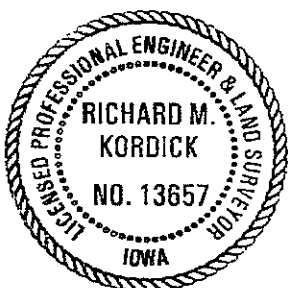
Reason for corner tie:

- A) There is no certificate for the corner on file with the recorder.
- B) Corner position differs from previously recorded certificate recorded in book , page
- C) Corner monument was replaced or modified.
- D) Reference ties in previously recorded certificate recorded in book , page are incorrect or missing.

Research at the recorder's office, auditor's office, and engineer's office revealed the following:
 None.

Field search performed was as follows:
 Field search was performed with probing and excavation.

Monument found or set:
 A stone was found and used as the corner.



I hereby certify that this land surveying document was prepared and the related survey work was performed by me or under my direct personal supervision and that I am a duly licensed Land Surveyor under the laws of the State of Iowa.

Richard M. Kordick 9/21/2006
 Richard M. Kordick date
 License number 13657
 My license renewal date is December 31, 2007.
 Pages or sheets covered by this seal: 1 of 1

LEGEND:

- Section Corner as noted
- Power Pole
- Section line
- Centerline
- Existing Fence.
- Recorded Dist.

Kordick Surveying
 & Engineering
 120 East Main, Suite D
 Anamosa, Iowa 52205
 (319) 462-4498

U.S. Public Land
 Survey Corner Certificate

Project: Plat of Survey
 Parcel No. 2006-139

Field BK
 06082
 Date
 9-21-06
 Job No.
 06082
 Sheet
 1 of 1