

COPY

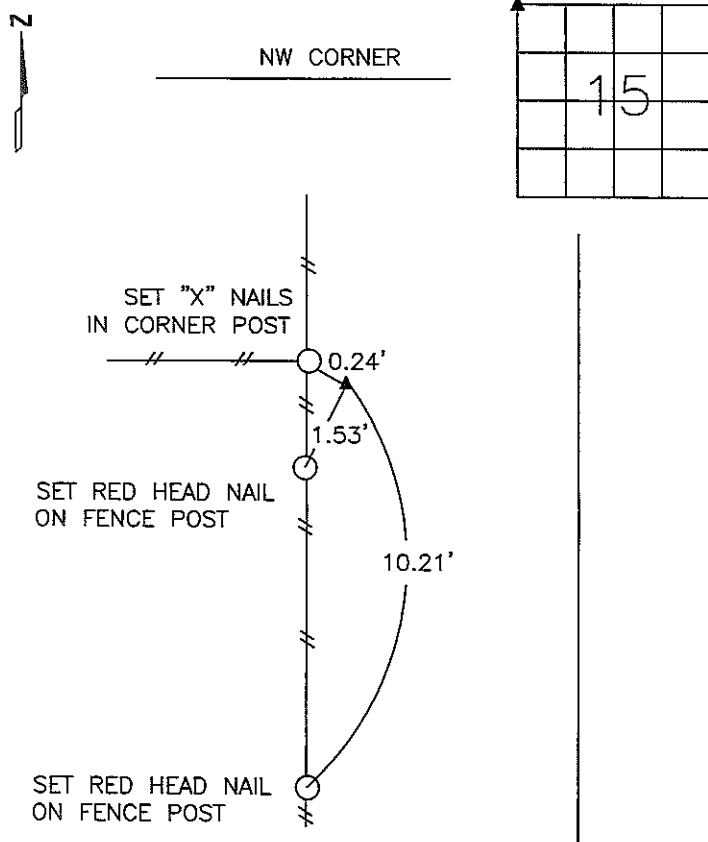
Jones County Marie Krutzfield
 Fee Book 2011 1096
 04/28/2011 @1032AM # Pages 1
 ZSC SEC COR CERT
 Total Fees: \$9.00

PREPARED BY
 STEPHEN MICHAEL BRAIN, BRAIN ENGINEERING, INC., 1540 MIDLAND COURT NE, CEDAR RAPIDS, IOWA PH. (319) 294-9424

UNITED STATES PUBLIC LAND SURVEY CORNER CERTIFICATE

LAND SURVEY MONUMENTS SITUATED IN SECTION 15, TOWNSHIP 83 NORTH
 RANGE 1 WEST OF THE 5TH P.M., JONES COUNTY, IOWA.

NO SCALE

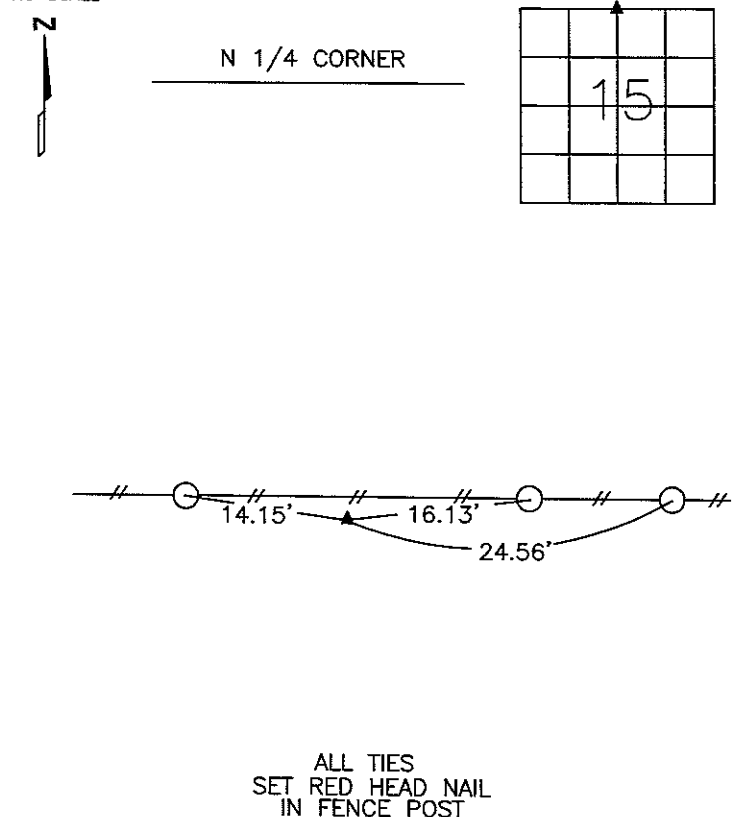


PREVIOUSLY RECORDED IN BOOK _____ PAGE _____

MONUMENT DESCRIPTION AND HOW ESTABLISHED _____

SET 1/2" REBAR W/ YELLOW PLASTIC CAP #9647 AFTER SEARCHING WITH SHOVEL AND METAL DETECTOR AND FINDING NOTHING. LOCATION MATCHED FENCES TO THE NORTH, SOUTH, WEST AND EAST

NO SCALE

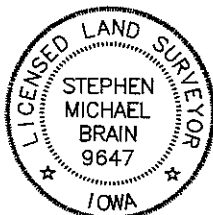


ALL TIES
 SET RED HEAD NAIL
 IN FENCE POST

PREVIOUSLY RECORDED IN BOOK _____ PAGE _____

MONUMENT DESCRIPTION AND HOW ESTABLISHED _____

SET 1/2" REBAR W/ YELLOW PLASTIC CAP #9647 AFTER SEARCHING WITH SHOVEL AND METAL DETECTOR BY PROPORTIONING THE DISTANCE FROM THE NE CORNER OF SECTION 15 THROUGH FOUND FENCE CORNER 660' EAST OF THE N 1/4



I hereby certify that this land surveying document and the related survey work was performed by me or under my direct personal supervision and that I am a duly licensed Land Surveyor under the laws of the State of Iowa.

Signed *Stephen Michael Brain* Date 4/27/11
 Stephen Michael Brain, L.S.
 My License Renewal Date Is December 31, 2012
 License Number 9647
 Pages or sheets covered by this seal: 1/1

- A.THERE IS NO CERTIFICATE FOR THE CORNER ON FILE WITH THE RECORDER OF THE COUNTY IN WHICH THE CORNER IS LOCATED
- B.THE SURVEYOR IN RESPONSIBLE CHARGE OF THE LAND SURVEYING ACCEPTS A CORNER POSITION WHICH DIFFERS FROM THAT SHOWN IN THE PUBLIC RECORDS OF THE COUNTY IN WHICH THE CORNER IS LOCATED.
- C.THE CORNER MONUMENT IS REPLACED OR MODIFIED IN ANY WAY.
- D.THE REFERENCE TIES REFERRED TO IN AN EXISTING PUBLIC RECORD ARE NOT CORRECT.

CORNERS TO BE INDEXED

CORNER	SECTION	TOWNSHIP	RANGE
NW CORNER	15	T83N	R1 W
N 1/4 CORNER	15	T83N	R1 W

BRAIN ENGINEERING, INC.

1540 MIDLAND COURT NE
 CEDAR RAPIDS, IOWA 52402 436311-10
 (319) 294-9424