

COPY

Jones County Marie Krutzfield Recorder  
 Fee Book 2012 2100  
 07/23/2012 @12:27PM # Pages 1  
 ZSC SEC COR CERT  
 Total Fees: \$7.00

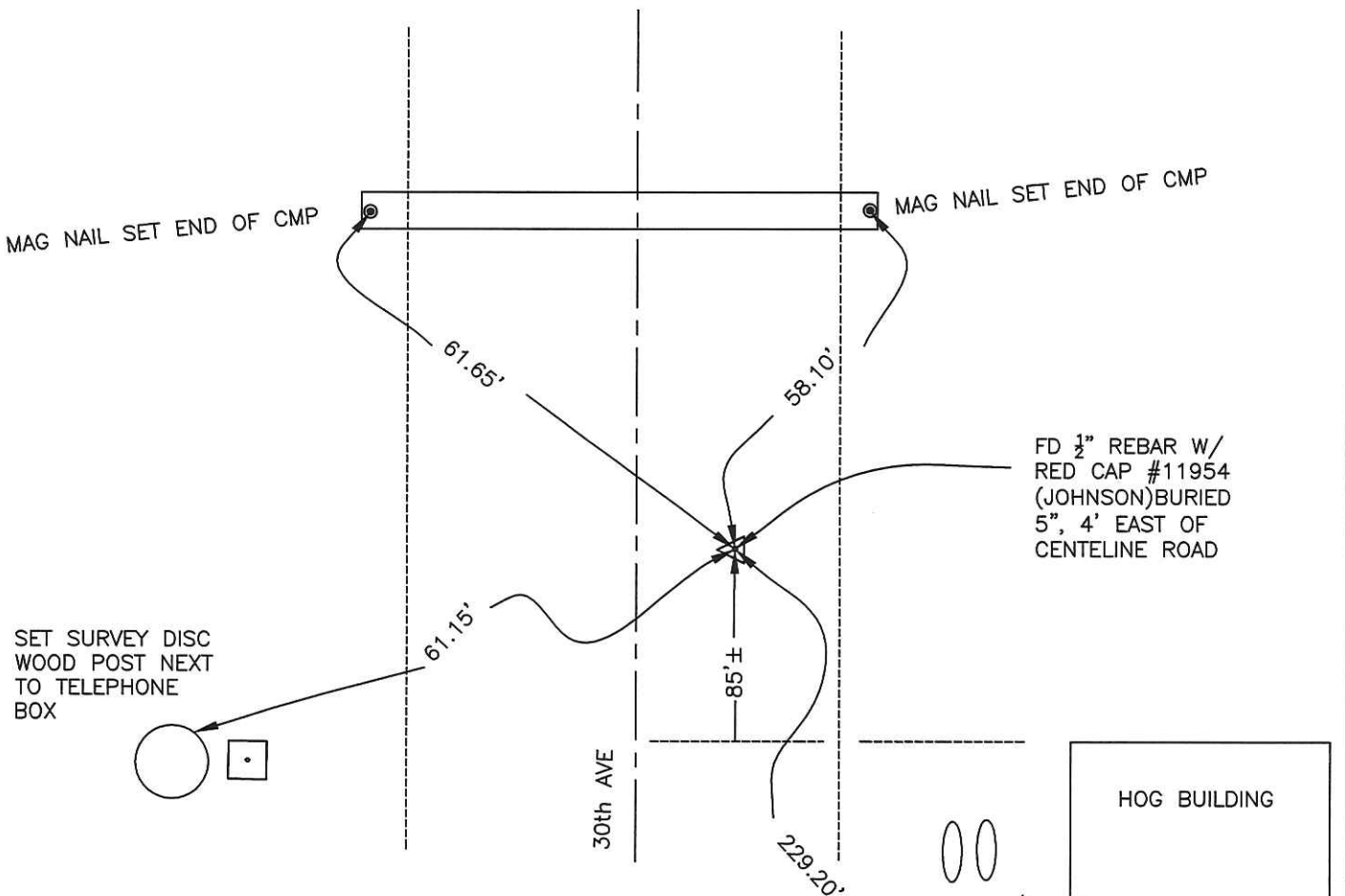
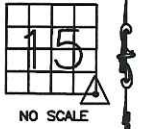
PATRICK E. POWELL, LS 20854, 8991 160th AVE, OLIN, IOWA, 52320 (319-462-4261)

# UNITED STATES PUBLIC LAND SURVEY CORNER CERTIFICATE

LAND SURVEY MONUMENTS SITUATED IN SECTION 15, TOWNSHIP 83  
 NORTH, RANGE 1 WEST OF THE 5TH P.M., JONES COUNTY, IOWA

CORNERS TO BE INDEXED

CORNER	SECTION	TOWNSHIP	RANGE
SE	15	83N	1W



PREVIOUSLY RECORDED AS DOCUMENT # 1999-3213 AT JONES COUNTY RECORDER'S OFFICE.

FOUND 1/2" REBAR WITH RED CAP #11954 PER CORNER CERTIFICATE AND USED AS NORTHWEST CORNER OF PARCEL #2008-92, RECORDED AS DOCUMENT #2008-2463 AND IN PLAT BOOK "S" PAGE 238 IN JONES COUNTY RECORDER'S OFFICE. ALL TIES WERE MISSING.

NEW TIES AS INDICATED FOR SE CORNER SECTION 15 T83N R1W.

FIELD WORK 6-16-2012  
 POWELL MISC BOOK 2012

PATRICK E. POWELL LS #20854  
 8991 160th AVE. OLIN, IOWA, 52320  
 (319)-462-4261

NOTE: ALL MEASUREMENTS IN FEET AND DECIMALS THEREOF.



I hereby certify that this land surveying document was prepared and the related survey work was performed by me or under my direct personal supervision and that I am a duly licensed Land Surveyor under the laws of the State of Iowa.  
 Signed: *Patrick E. Powell*  
 Date: *7-23-2012*  
 Patrick E. Powell, L.S., No. 20854  
 My license renewal date is December 31, 2013.

CORNERS TO BE INDEXED

CORNERS	SECTION	TOWNSHIP	RANGE
SE	15	83	1W
NE	22	83	1W
SW	14	83	1W
NW	23	83	1W

1999 3213  
FILED  
RECORDERS OFFICE  
JONES COUNTY IOWA

99 SEP -8 AM 10:53

MARIE KRUTZFIELD  
RECORDER 6.00 Pd

PREPARED BY HALL & HALL ENGINEERS, INC. 200 28TH STREET N.E. CEDAR RAPIDS, IOWA 52402 (319) 382-8848  
SECTION CORNER CERTIFICATE

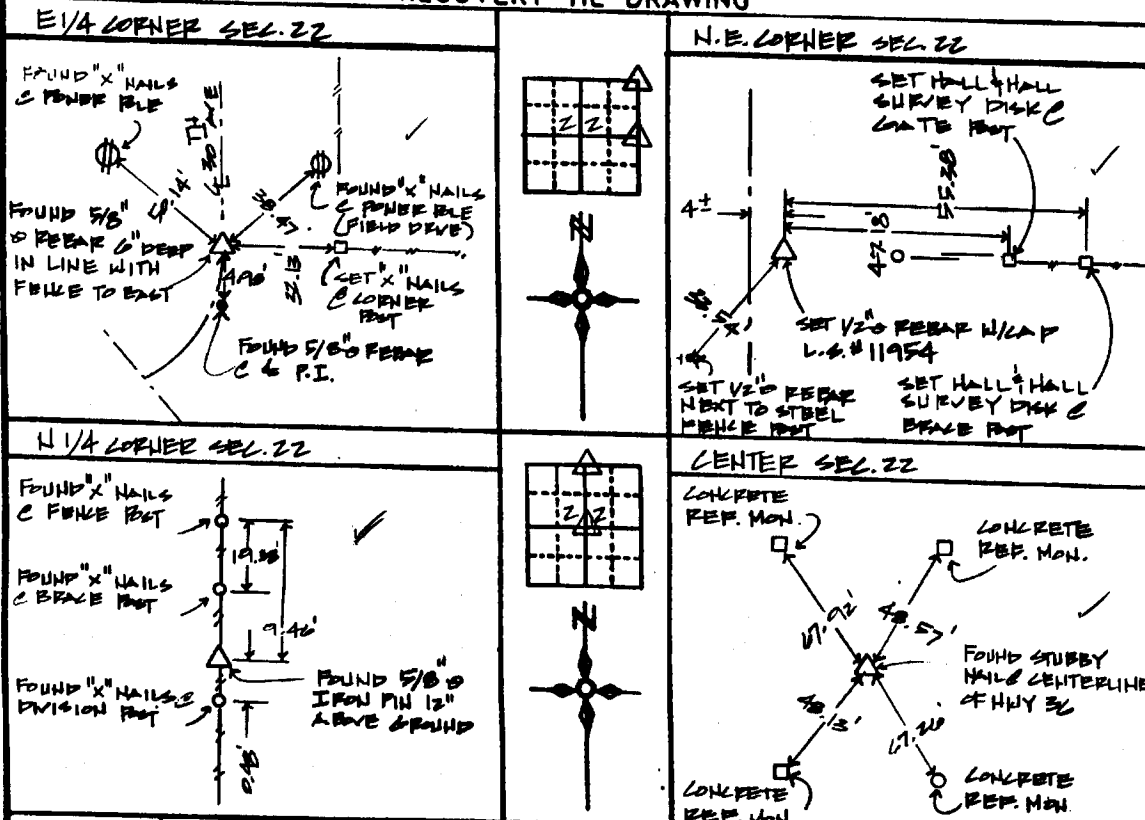
OF  
LAND SURVEY MONUMENTS SITUATED IN SECTION 22, TOWNSHIP 83 NORTH,  
RANGE 1 WEST, OF THE FIFTH PRINCIPAL MERIDIAN, JONES COUNTY, IOWA.

PREVIOUSLY RECORDED IN BOOK \_\_\_\_\_ AT PAGE \_\_\_\_\_

MONUMENT DESCRIPTION AND REMARKS:

E 1/4 OF SECTION 22, FOUND 5/8" REBAR  
N.E. CORNER OF SECTION 22, SET 1/2" REBAR W/ CAP L.S.# 11954  
N 1/4 CORNER OF SECTION 22, FOUND 5/8" IRON PIN 12" ABOVE GROUND  
CENTER OF SECTION 22, FOUND STUBBY NAIL & CENTERLINE OF HWY 36

RECOVERY TIE DRAWING



I hereby certify that this land surveying document was prepared and the related survey work was performed by me or under my direct personal supervision and that I am a duly Licensed Land Surveyor under the laws of the State of Iowa.

Signed: Daniel J. Johnson Date: 9-8-99  
Daniel J. Johnson, L.S. 11984  
My license renewed July 6, December 31, 2000

Pages or sheets covered by this book (Entire submission unless specified here)

REASON FOR PREPARING CERTIFICATE:

A) THERE IS NO CERTIFICATE FOR THE CORNER ON FILE WITH THE RECORDER OF THE COUNTY IN WHICH THE CORNER IS LOCATED

B) CORNER POSITION DIFFERS FROM THAT SHOWN IN THE PUBLIC RECORDS OF THE COUNTY IN WHICH THE CORNER IS LOCATED

C) THE CORNER MONUMENT HAS BEEN REPLACED OR MODIFIED

D) THE REFERENCE TIES REFERRED TO IN AN EXISTING PUBLIC RECORD ARE INCORRECT

1/4 SECTION CORNER 1/2" 1/2" W/ L.S. CAP SET --- EXISTING FENCE LINE --- PROPERTY LINE	SHEET NO. <b>1</b> OF <b>1</b>	US PUBLIC LAND SURVEY RECORD PLAT NO. <b>JONES COUNTY ACQUISITION PLAT</b>	HALL AND HALL ENGINEERS, INC. 200 28TH STREET N.E. CEDAR RAPIDS, IOWA 52402 (319) 382-8848
	T.M.R.	D.U.D.	D.U.D.