

2003 0951

FILED
RECORDERS OFFICE
JONES COUNTY IOWA

03 MAR -6 AM 10:25

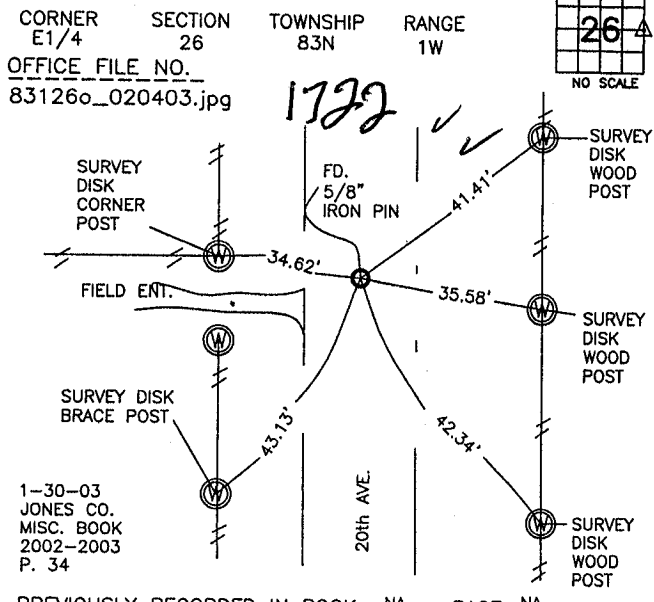
MARIE KRUTZFIELD
RECORDER NO FEE

J.D. TJEPKES, LS. JONES COUNTY ENGINEER'S OFFICE, 19501 HWY. 64, ANAMOSA, IOWA, 52205 (319)462-3785

UNITED STATES PUBLIC LAND SURVEY CORNER CERTIFICATE

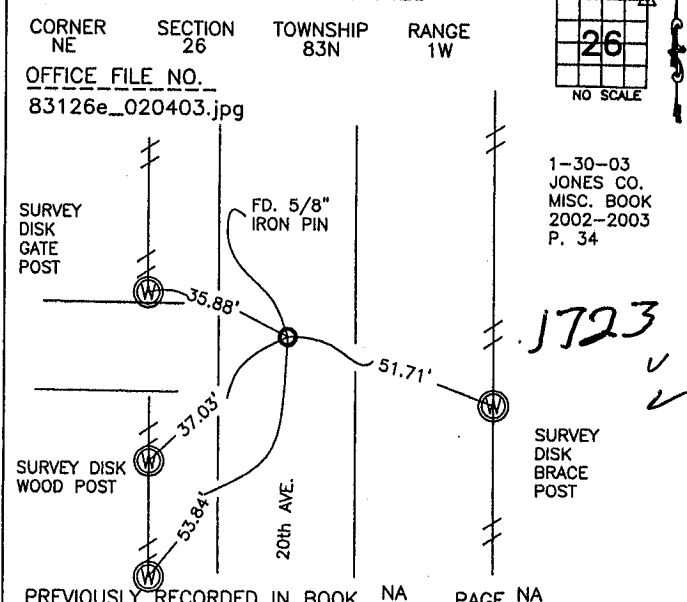
LAND SURVEY MONUMENTS SITUATED IN SECTION 26, TOWNSHIP 83
NORTH, RANGE 1 WEST OF THE 5TH P.M., JONES COUNTY, IOWA

CORNERS TO BE INDEXED



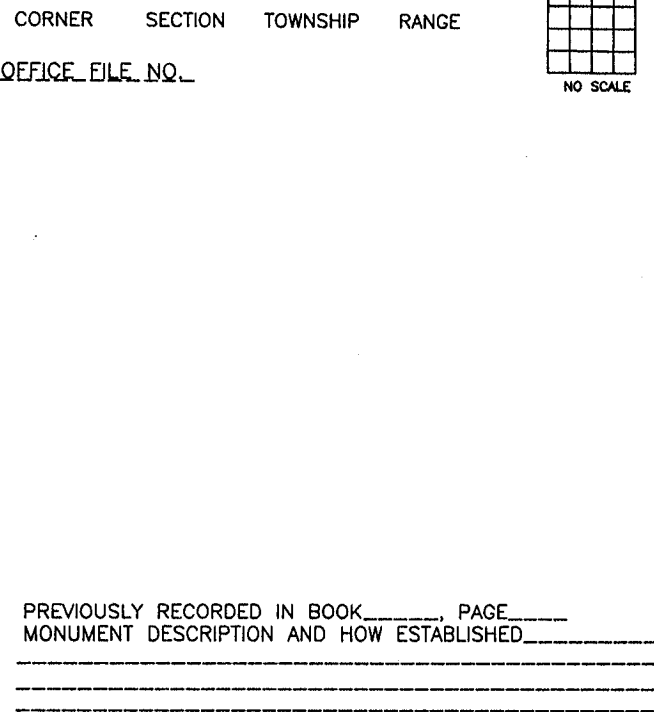
PREVIOUSLY RECORDED IN BOOK NA, PAGE NA
MONUMENT DESCRIPTION AND HOW ESTABLISHED
FOUND 5/8" IRON PIN IN CL OF ROAD AND ON LINE WITH FENCE GOING WEST. FOUND NO TIES. PIN BURIED 4". REFERENCE TIES AS INDICATED. E1/4 T83N R1W.

CORNERS TO BE INDEXED

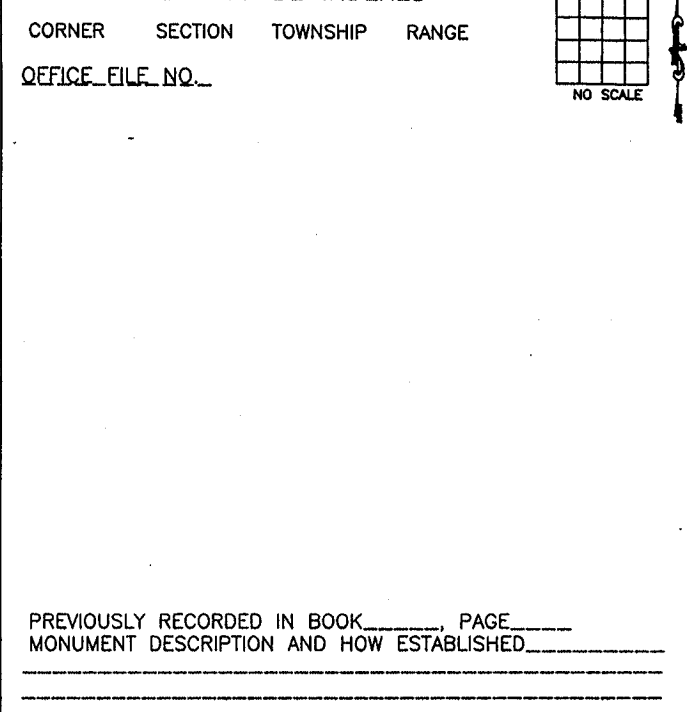


PREVIOUSLY RECORDED IN BOOK NA, PAGE NA
MONUMENT DESCRIPTION AND HOW ESTABLISHED
FOUND 5/8" IRON PIN IN CL 20th AVE. TIES AS INDICATED. NE SECTION 26 T83N R1W

CORNERS TO BE INDEXED

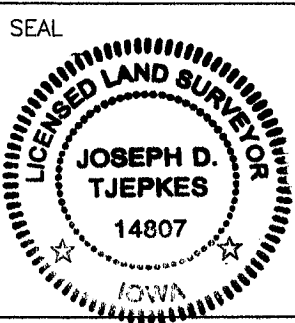


CORNERS TO BE INDEXED



I hereby declare that this plat, survey or report was made by me or under my direct personal supervision and that I am a duly registered Land Surveyor under the laws of the State of Iowa.

Signed: [Signature] 3-4-03
Joseph D. Tjepkes L.S. Iowa Reg. No. 14807
My Registration Renewal Date is December 31, 2004



J.D. TJEPKES LS 14807
JONES COUNTY
ENGINEER'S OFFICE

19501 HWY. 64,
ANAMOSA, IOWA,
52205 (319)462-3785

CC