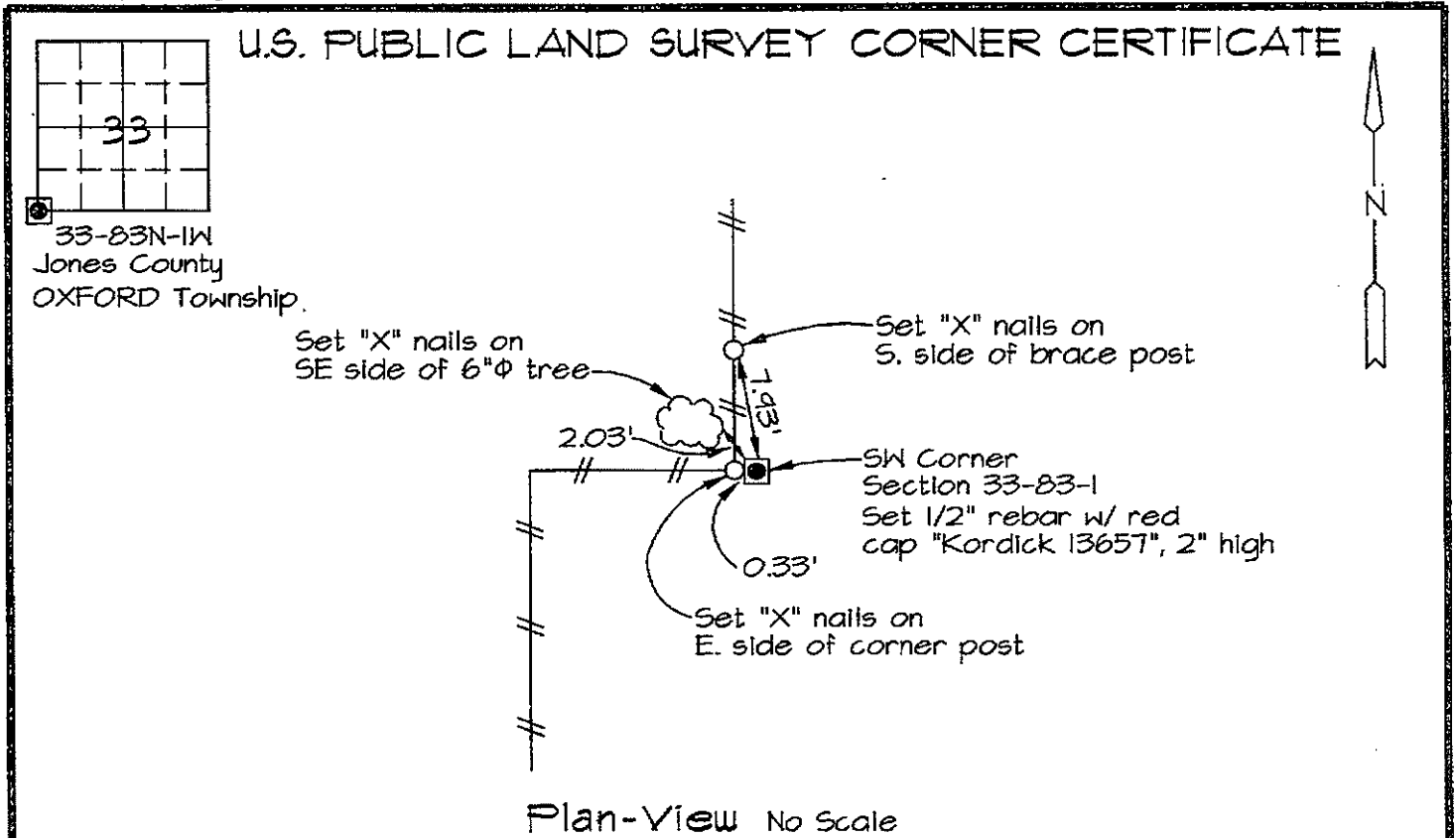


Marie Krutzfield, Recorder  
 Jones County, Iowa

Prepared by: Richard M. Kordick, P.E., L.S., 120 East Main, Suite D, Anamosa, IA 52205 Phone: (319) 462-4498



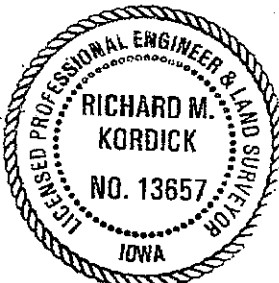
Section corner location: SW Corner, Section 33-83-1

Reason for corner tie:  
 A) There is no certificate for the corner on file with the recorder.  
 B) Corner position differs from previously recorded certificate recorded in book , page  
 C) Corner monument was replaced or modified.  
 D) Reference ties in previously recorded certificate recorded in book , page are incorrect or missing.

Research at the recorder's office, auditor's office, and engineer's office revealed the following:  
 None.

Field search performed was as follows:  
 Field search was performed with a metal detector, excavation and probing. Nothing was found.

Monument found or set:  
 The corner was determined to be obliterated. A 1/2 inch rebar with red cap "Kordick 13657" was set 2 inch high, at the fence corner which perpetuated the corner location.

	<p>I hereby certify that this land surveying document was prepared and the related survey work was performed by me or under my direct personal supervision and that I am a duly licensed Land Surveyor under the laws of the State of Iowa.</p> <p><i>Richard M. Kordick</i> 11/1/2006        Richard M. Kordick date        License number 13657        My license renewal date is December 31, 2007.        Pages or sheets covered by this seal: 1 of 1</p>	<p><b>LEGEND:</b></p> <p>■ Section Corner as noted</p> <p>⊕ Power Pole</p> <p>--- Section line</p> <p>--- Centerline</p> <p>    Existing Fence</p> <p>( ) Recorded Dist.</p>
---	--	--

<b>Kordick Surveying &amp; Engineering</b> 120 East Main, Suite D Anamosa, Iowa 52205 (319) 482-4498	<b>U.S. Public Land Survey Corner Certificate</b>	Field BK 06087
	Project: Plat of Survey Parcel No. 2006-146, 2006-147, and 2006-148 Proprietor: Mo Star Farms, Inc.	Date 11-1-06
		Sheet 1 of 1