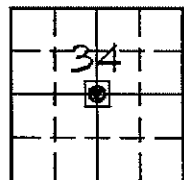


Marie Krutzfield, Recorder
 Jones County, Iowa

Prepared by: Richard M. Kordick, P.E.L.S., 120 East Main, Suite D, Anamosa, IA 52205 Phone: (319) 462-4498

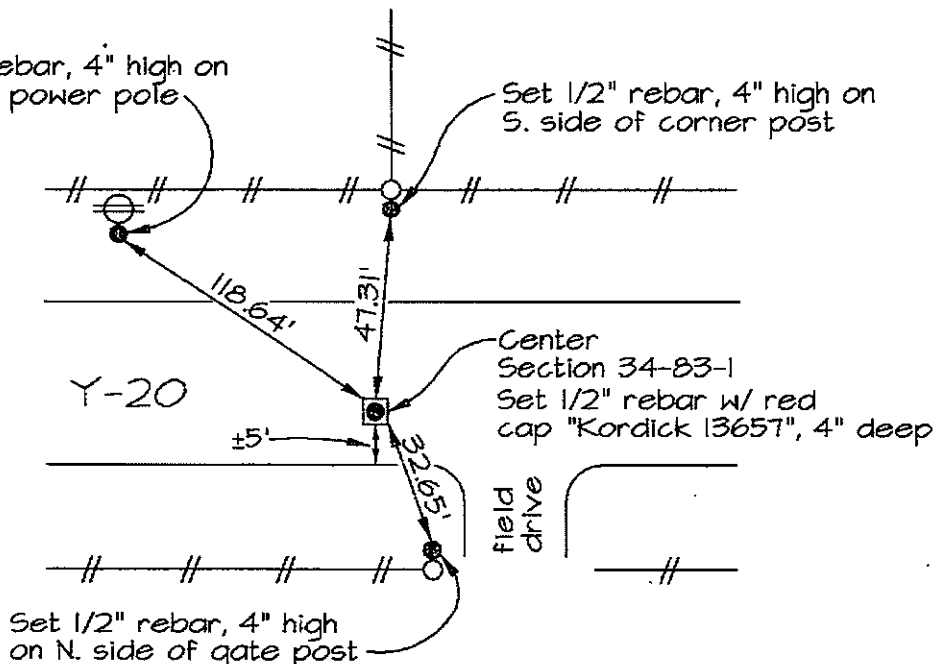
U.S. PUBLIC LAND SURVEY CORNER CERTIFICATE



34-83N-1W
 Jones County
 OXFORD Township

Set 1/2" rebar, 4" high on S. side of power pole

Set 1/2" rebar, 4" high on S. side of corner post



Plan-View No Scale

Section corner location: Center, Section 34-83-1

Reason for corner tie:

- A) There is no certificate for the corner on file with the recorder.
- B) Corner position differs from previously recorded certificate recorded in book , page
- C) Corner monument was replaced or modified.
- D) Reference ties in previously recorded certificate recorded in book , page are incorrect or missing.

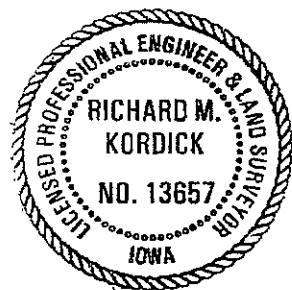
Research at the recorder's office, auditor's office, and engineer's office revealed the following: None.

Field search performed was as follows:

Field search was performed with a metal detector, excavation and probing. Nothing was found.

Monument found or set:

The corner was determined to be lost. A 1/2" rebar with red cap "Kordick 13657" was set, 4" deep, using the double proportionate measure method.



I hereby certify that this land surveying document was prepared and the related survey work was performed by me or under my direct personal supervision and that I am a duly licensed Land Surveyor under the laws of the State of Iowa.

Richard M. Kordick 10/20/2006
 Richard M. Kordick date
 License number 13657
 My license renewal date is December 31, 2007.
 Pages or sheets covered by this seal: 1 of 1

LEGEND:

- Section Corner as noted
- Power Pole
- Section line
- Centerline
- Existing Fence
- Recorded Dist.

Kordick Surveying & Engineering
 120 East Main, Suite D
 Anamosa, Iowa 52205
 (319) 462-4498

U.S. Public Land Survey Corner Certificate

Project: Plat of Survey
 Parcel No. 2006-146,
 2006-147, and 2006-148
 Proprietor: Mo Star Farms, Inc.

Field BK
 06087
 Date
 10-26-06
 Job No.
 06087
 Sheet
 1 of 1