

# UNITED STATES PUBLIC LAND SURVEY CORNER CERTIFICATE

OF

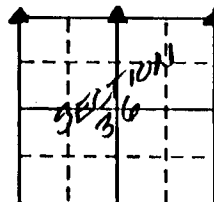
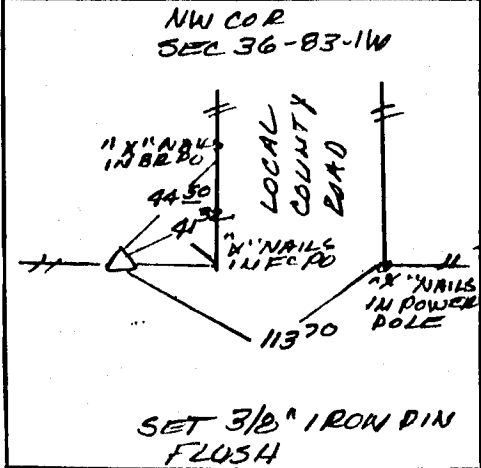
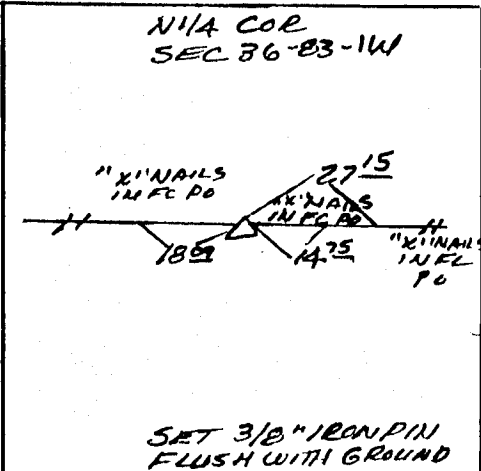
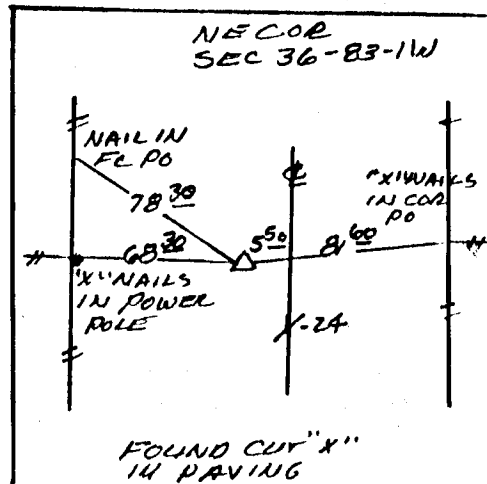
Land Survey Monuments situated in Section 36, Township 83 NORTH, Range 1 WEST, of the Fifth Principal Meridian, JONES County, Iowa.  
 Previously recorded in DOES NOT APPLY in County Recorder's Office.  
(book, page, document number, etc.)

(Show reason for preparing this certificate, the evidence and detailed procedures used in establishing the corner positions and monumentation found or placed.)

Monument Description and Remarks: FOUND CUT "X" IN PAVING AT THE LOCATION OF THE NORTHEAST CORNER. SET THE NORTHWEST CORNER USING ORIGINAL GOVERNMENT SURVEY DISTANCE AND FENCE LINE EVIDENCE. SET THE NORTH QUARTER CORNER USING THE FENCE LINE EVIDENCE

## PLAN - VIEW

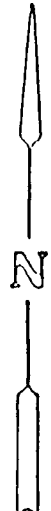
(Show a minimum of three reference ties to durable physical objects, relevant monuments and physical conditions that will enable recovery of the corner.)



OXFORD  
 N 1/4 SEC 36  
 ON CARD  
 12-6-90

OXFORD  
 NE COR SEC 35  
 ON CARD  
 12-6-90

OXFORD NE COR SEC 36  
 ON CARD 12-6-90  
 M.S



I hereby certify that the survey work was completed and this certificate was prepared by me or under my direct personal supervision and that I am a duly registered land surveyor under the laws of the state of Iowa.

Signature: Larry R. McGuire  
 Name typed or printed: LARRY R. MCGUIRE

Date: 11/28/90 Reg. No. 9019

Corners	List Corners to be Indexed		
	Section	Twp	Range
NE	36	83N	1W
NW	36	83N	1W
NW	36	83N	1W

SEAL

