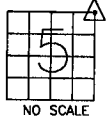


UNITED STATES PUBLIC LAND SURVEY CORNER CERTIFICATE

LAND SURVEY MONUMENTS SITUATED IN SECTION 5, TOWNSHIP 83
NORTH, RANGE 1 WEST OF THE 5TH P.M., JONES COUNTY, IOWA

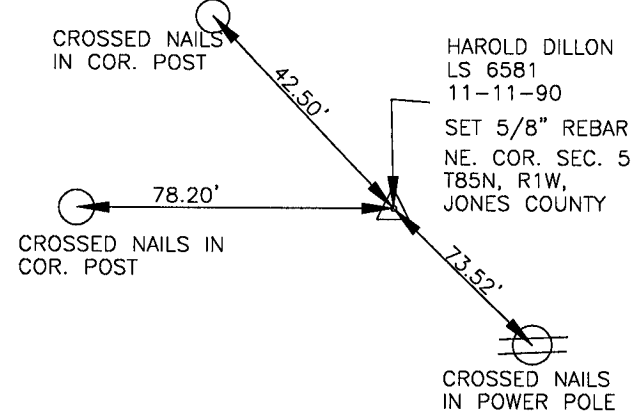
CORNERS TO BE INDEXED

CORNER SECTION TOWNSHIP RANGE
N.E. 5 83N 1W



OFFICE FILE NO.

83105e_022301

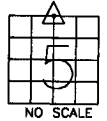


HAROLD DILLON
LS 6581
11-11-90
SET 5/8" REBAR
NE. COR. SEC. 5
T85N, R1W,
JONES COUNTY

PREVIOUSLY RECORDED IN BOOK N/A, PAGE N/A
MONUMENT DESCRIPTION AND HOW ESTABLISHED
NO CERTIFICATION ON THIS CORNER. TIES TAKEN FROM
SMALL CARD FILE.

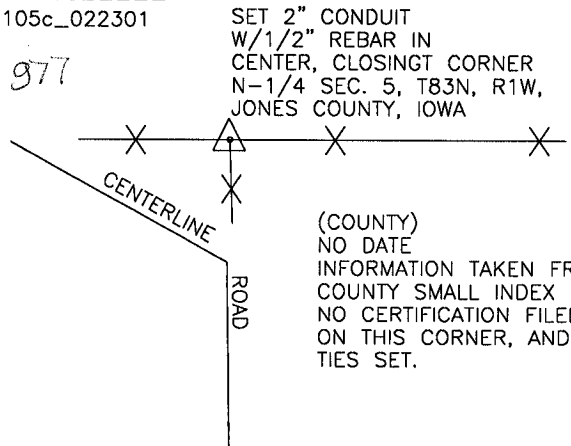
CORNERS TO BE INDEXED

CORNER SECTION TOWNSHIP RANGE
N-1/4 5 83N 1W



OFFICE FILE NO.

83105c_022301



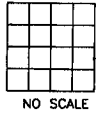
SET 2" CONDUIT
W/1/2" REBAR IN
CENTER, CLOSINGT CORNER
N-1/4 SEC. 5, T83N, R1W,
JONES COUNTY, IOWA

(COUNTY)
NO DATE
INFORMATION TAKEN FROM
COUNTY SMALL INDEX CARD.
NO CERTIFICATION FILED
ON THIS CORNER, AND NO
TIES SET.

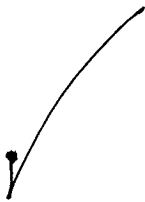
PREVIOUSLY RECORDED IN BOOK N/A, PAGE N/A
MONUMENT DESCRIPTION AND HOW ESTABLISHED SET CORNER
AS INDICATED IN LINE WITH FENCE AND ROAD SOUTH, IN LINE WITH FENCE
TO EAST AND AGAINST WEST SIDE OF OLD CORNER POST, FENCES RUN
EAST, WEST AND SOUTH

CORNERS TO BE INDEXED

CORNER SECTION TOWNSHIP RANGE



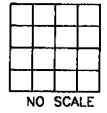
OFFICE FILE NO.



PREVIOUSLY RECORDED IN BOOK _____, PAGE _____
MONUMENT DESCRIPTION AND HOW ESTABLISHED _____

CORNERS TO BE INDEXED

CORNER SECTION TOWNSHIP RANGE



OFFICE FILE NO.

PREVIOUSLY RECORDED IN BOOK _____, PAGE _____
MONUMENT DESCRIPTION AND HOW ESTABLISHED _____

~~I hereby declare that this plat, survey or report was made by me or under my direct personal supervision and that I am a duly registered Land Surveyor under the laws of the State of Iowa.~~

Signed:

~~Joseph D. Tjepkes L.S. Iowa Reg. No. 14807
My Registration Renewal Date is December 31, 2002~~

SEAL

J.D. TJEPKES LS 14807
JONES COUNTY
ENGINEER'S OFFICE

19501 HWY. 64,
ANAMOSA, IOWA,
52205 (319)462-3785