

96 OCT -8 AM 10:08

BOOK 410 PAGE 169
LINDA J. BENDIXEN
RECORDER *LJB*

Wm. Burger Land Surveyors 510 3rd St. West Court Worthington, Iowa Phone 319 855 2028
SE 19-90

UNITED STATES PUBLIC LAND SURVEY CORNER CERTIFICATE

OF

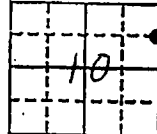
Land Survey Monuments situated in Section TEN (10), Township 86 NORTH, Range 2ND (2) WEST of the Fifth Principal Meridian, JONES County, Iowa.
Previously recorded in DOES NOT APPLY in County Recorder's Office.
(book, page, document number, etc.)

(Show reason for preparing this certificate, the evidence and detailed procedures used in establishing the corner positions and monumentation found or placed.)

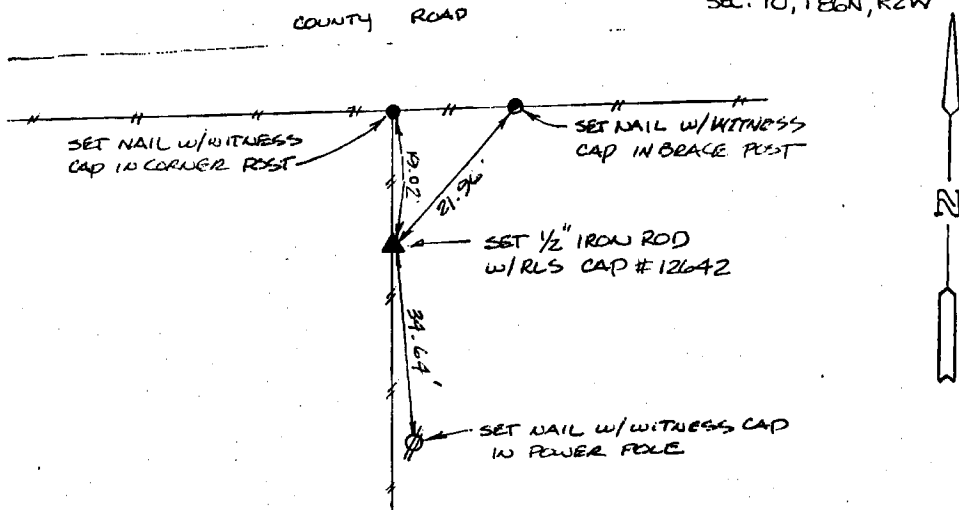
Monument Description and Remarks: NO CORNER CERTIFICATE FOUND AT JONES COUNTY RECORDERS OFFICE. SE CORNER - NE 1/4, NE 1/4 - SET 1/2" IRON ROD W/ RLS CAP #12642 ONLINE & MID-WAY BETWEEN NE CORNER & E 1/4 CORNER OF SAID SECTION TEN (10)

PLAN - VIEW

(Show a minimum of three reference ties to durable physical objects, relevant monuments and physical conditions that will enable recovery of the corner.)



SEC. 10, T86N, R2W

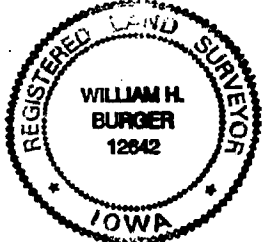


*ON
COR*

I hereby certify that the survey work was completed and this certificate was prepared by me or under my direct personal supervision and that I am a duly registered land surveyor under the laws of the state of Iowa.

Signature: William H. Burger
Name typed or printed: WILLIAM H. BURGER

Date: 10/4/96 Reg. No. 12642



SEAL

Corners	List Corners to be Indexed		
	Section	Twp	Range
SE - NE 1/4, NE 1/4	10	86N	2W