

COPY

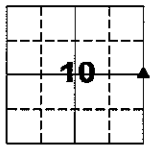
Jones County Marie Krutzfield Recorder  
 Fee Book 2012 1453  
 05/21/2012 @1050AM # Pages 2  
 ZSC SEC COR CERT  
 Total Fees: \$0.00

PREPARED BY  
 CLARENCE J. WALTON, JONES COUNTY ENGINEER'S OFFICE, 19501 HWY. 64, ANAMOSA, IOWA, 52205 (319) 462-3785

UNITED STATES PUBLIC LAND  
 SURVEY CORNER CERTIFICATE

LAND SURVEY MONUMENTS SITUATED IN SECTION 10, TOWNSHIP 86 NORTH,  
 RANGE 2 WEST OF THE 5TH PRINCIPAL MERIDIAN, JONES COUNTY, IOWA.

SURVEYOR'S  
 NARRATIVE  
 E 1/4 CORNER SECTION 10-T86N-R2W



NO SCALE

Per Corner Certificate for the SE corner of the NE 1/4 NE 1/4 Section 10-T86N-R2W as recorded in Book 410, page 169 we doubled the distance from the NE corner of said Section 10 to said SE corner over to the south. We found a 60d redhead lying somewhat askew, 1"-6" below present ground surface. We also found that the found redhead fit closely to being equidistant between said SE corner and a fence intersection at the NE corner of the SE 1/4 SE 1/4 of said Section 10. Aerial photos circa 1930 show no fence lines from the east or west intersecting with the north-south fence line. However, an east-west fence line from (roughly) the center of Section 11-T86N-R2W to (roughly again) the SE corner of the SW 1/4 NW 1/4 of said Section 11 if extended falls approximately 1.7 feet north of said found redhead. It is to be noted that said east-west fence line does wander in its alignment, so depending what portion of the fence is extended, its falling would vary north or south from the redhead.

Further, said found redhead also fell within 0.5 feet of being on a straight line between said SE and said NE corners. All said and done, the E 1/4 corner was set at a best fit with distances and evidence.

Page 1 of 2



I hereby certify that this land surveying document and the related survey work was performed by me or under my direct personal supervision and that I am a duly registered Land Surveyor under the laws of the State of Iowa.

Signed: *Clarence J. Walton* 5/21/12  
 Clarence J. Walton, L.S.  
 My Registration Renewal Date is December 31, 2013  
 Iowa License Number 11310  
 Pages or sheets covered by this seal: 1 of 2.

- A. THERE IS NO CERTIFICATE FOR THE CORNER ON FILE WITH THE RECORDER OF THE COUNTY IN WHICH THE CORNER IS LOCATED.
- B. THE CORNER MONUMENT HAS BEEN REPLACED OR MODIFIED.
- C. THE SURVEYOR IN RESPONSIBLE CHARGE OF THE LAND SURVEYING ACCEPTS A CORNER POSITION THAT DIFFERS FROM THAT SHOWN IN THE PUBLIC RECORDS OF THE COUNTY IN WHICH THE CORNER IS LOCATED.
- D. THE REFERENCE TIES REFERRED TO IN AN EXISTING PUBLIC RECORD NO LONGER EXIST.
- E. EXISTING CORNER TIES UPDATED.

CORNERS TO BE INDEXED

CORNER	SECTION	TOWNSHIP	RANGE
E 1/4 CORNER	10	86N	2W
W 1/4 CORNER	11	86N	2W

JONES COUNTY ENGINEER'S OFFICE



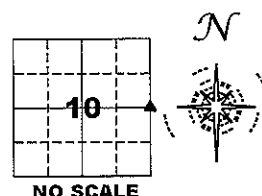
19501 HWY. 64, ANAMOSA, IOWA 52205  
 (319) 462-3785

# UNITED STATES PUBLIC LAND SURVEY CORNER CERTIFICATE

LAND SURVEY MONUMENTS SITUATED IN SECTION 10, TOWNSHIP 86 NORTH, RANGE 2 WEST OF THE 5TH PRINCIPAL MERIDIAN, JONES COUNTY, IOWA.

STATE PLANE COORDINATE  
NAD 83 IOWA NORTH  
N 3572460.21  
E 5583351.02

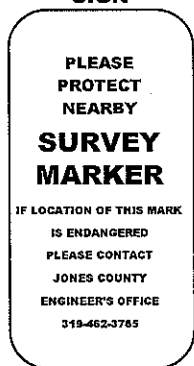
CORNER SECTION TOWNSHIP RANGE  
E 1/4 CORNER 10 T86N R2W



NOTES:

- 1) THE STATE PLANE COORDINATES AS SHOWN ARE FOR CONVENIENCE ONLY. THE TIES AS SHOWN SHOULD BE USED TO REPLACE THE CORNER, IF DESTROYED.
- 2) COORDINATES AS SHOWN ARE GRID COORDINATES AND BASED ON JONES COUNTY G.P.S. CONTROL NETWORK WHICH IN TURN IS BASED ON NAD 83 IOWA NORTH DATUM.
- 3) ALL MEASUREMENTS ARE IN FEET AND DECIMALS THEREOF.
- 4) \* GRID DISTANCE, BASED ON JONES COUNTY G.P.S. CONTROL NETWORK.

"SURVEY MARKER" SIGN



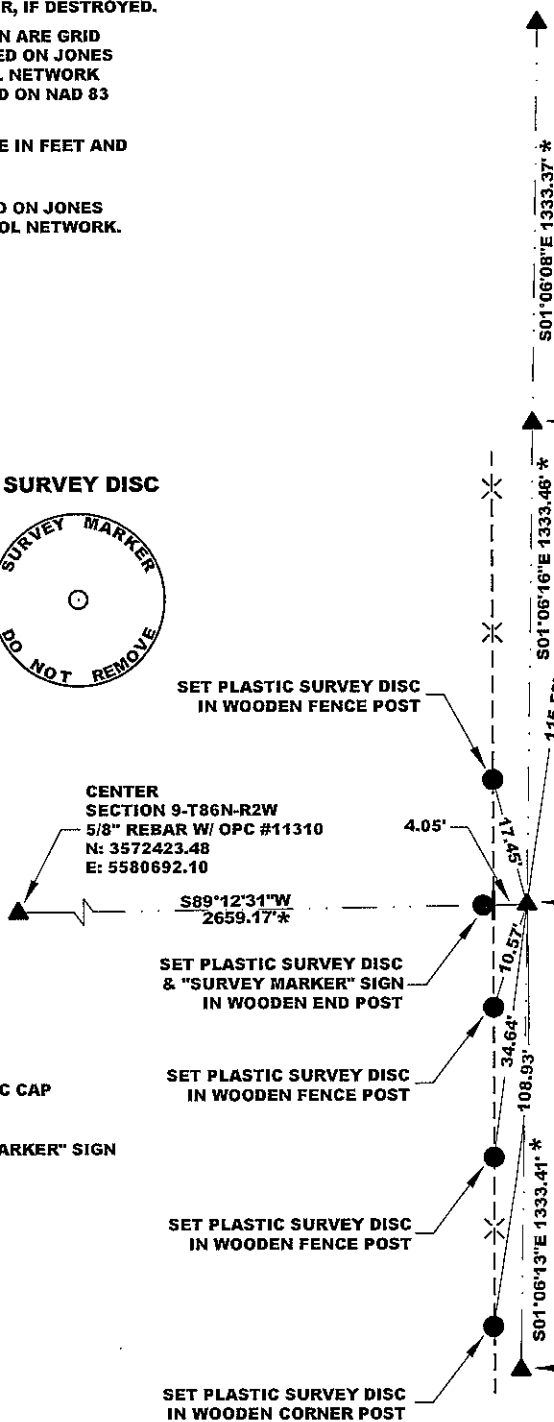
NE CORNER  
SECTION 10-T86N-R2W  
FOUND 1/2" REBAR W/OPC  
(# OBLITERATED)  
1" BELOW PRESENT GROUND SURFACE  
N: 3575126.54  
E: 5583299.67  
RECORDER'S DOCUMENT 2012 1763

NE CORNER  
SE 1/4 NE 1/4  
SECTION 10-T86N-R2W  
FOUND 1/2" REBAR W/YPC #12642  
N: 3573793.42  
E: 5583325.32  
BOOK 410, PAGE 169

SET PLASTIC SURVEY DISC  
IN CROSS COUNTRY ELECTRIC  
TRANSMISSION POLE

E 1/4 CORNER  
SECTION 10-T86N-R2W  
FOUND 60d RED HEAD LYING ASKEW  
1" - 6" BELOW PRESENT GROUND SURFACE  
SET 5/8" X 24" REBAR W/OPC #11310 ±18"  
BELOW PRESENT GROUND SURFACE  
N: 3572460.21  
E: 5583351.02

NE CORNER  
SE 1/4 SE 1/4  
SECTION 10-T86N-R2W  
SET 5/8" X 24" REBAR W/OPC #11310  
±3" ABOVE PRESENT GROUND SURFACE  
N: 3571127.05  
E: 5583376.70  
RECORDER'S DOCUMENT 2012 0542



LEGEND

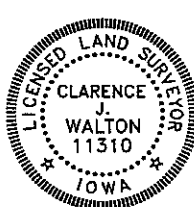
- OPC ORANGE PLASTIC CAP
- ( ) RECORDED AS
- SET "SURVEY MARKER" SIGN IN FENCE POST

PREVIOUSLY RECORDED IN N/A

Page 2 of 2

MONUMENT DESCRIPTION AND HOW ESTABLISHED FOUND REDHEAD 80d SPIKE LYING ASKEW IN GROUND 1"-6" BELOW PRESENT GROUND SURFACE AT NEARLY DOUBLE THE DISTANCE OF THAT BETWEEN THE NE CORNER OF SECTION 10-T86N-R2W AND THE NE CORNER SE 1/4 NE 1/4 OF SAID SECTION 10 ( AS PER CORNER CERTIFICATE IN BOOK 410, PAGE 169, JONES COUNTY, IOWA RECORDER'S OFFICE. AS CAN BE SEEN THE ENTIRE LINE SHOWN BREAKS DOWN WELL. THERE WAS NO EVIDENCE OF AN EAST-WEST FENCE IN THE AREA NOR DO AERIAL PHOTOS FROM THE 1940'S SHOW ANY SUCH FENCE. PLEASE REFER TO THE CORNER CERTIFICATE FOR THE NE CORNER SE 1/4 SE 1/4 OF SAID SECTION 10 AND NARRATIVE PAGE FOR ADDITIONAL INFORMATION

DATA COLLECTOR DATE OF SURVEY: 11/3/11



I hereby certify that this land surveying document and the related survey work was performed by me or under my direct personal supervision and that I am a duly registered Land Surveyor under the laws of the State of Iowa.

Signed: *Clarence J. Walton* 5/21/12  
Clarence J. Walton, L.S.  
My Registration Renewal Date is December 31, 2013  
Iowa License Number 11310  
Pages or sheets covered by this seal: 2 of 2.

- A. THERE IS NO CERTIFICATE FOR THE CORNER ON FILE WITH THE RECORDER OF THE COUNTY IN WHICH THE CORNER IS LOCATED.
- B. THE CORNER MONUMENT HAS BEEN REPLACED OR MODIFIED.
- C. THE SURVEYOR IN RESPONSIBLE CHARGE OF THE LAND SURVEYING ACCEPTS A CORNER POSITION THAT DIFFERS FROM THAT SHOWN IN THE PUBLIC RECORDS OF THE COUNTY IN WHICH THE CORNER IS LOCATED.
- D. THE REFERENCE TIES REFERRED TO IN AN EXISTING PUBLIC RECORD NO LONGER EXIST.
- E. EXISTING CORNER TIES UPDATED.

CORNERS TO BE INDEXED

CORNER	SECTION	TOWNSHIP	RANGE
E 1/4 CORNER	10	86N	2W
W 1/4 CORNER	11	86N	2W

JONES COUNTY ENGINEER'S OFFICE



19501 HWY. 64, ANAMOSA, IOWA 52205  
(319) 462-3785