

# COPY

□□  
 Jones County Marie Krutzfield Recorder  
 Fee Book 2011 3374  
 12/30/2011 @ 11:59AM # Pages 1  
 ZSC SEC COR CERT  
 Total Fees: \$0.00

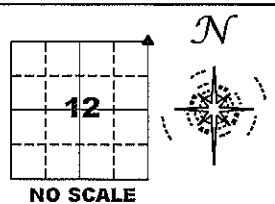
PREPARED BY  
 CLARENCE J. WALTON, JONES COUNTY ENGINEER'S OFFICE, 19501 HWY. 64, ANAMOSA, IOWA, 52205 (319) 462-3785

## UNITED STATES PUBLIC LAND SURVEY CORNER CERTIFICATE

LAND SURVEY MONUMENTS SITUATED IN SECTION 12, TOWNSHIP 86 NORTH,  
 RANGE 2 WEST OF THE 5TH PRINCIPAL MERIDIAN, JONES COUNTY, IOWA.

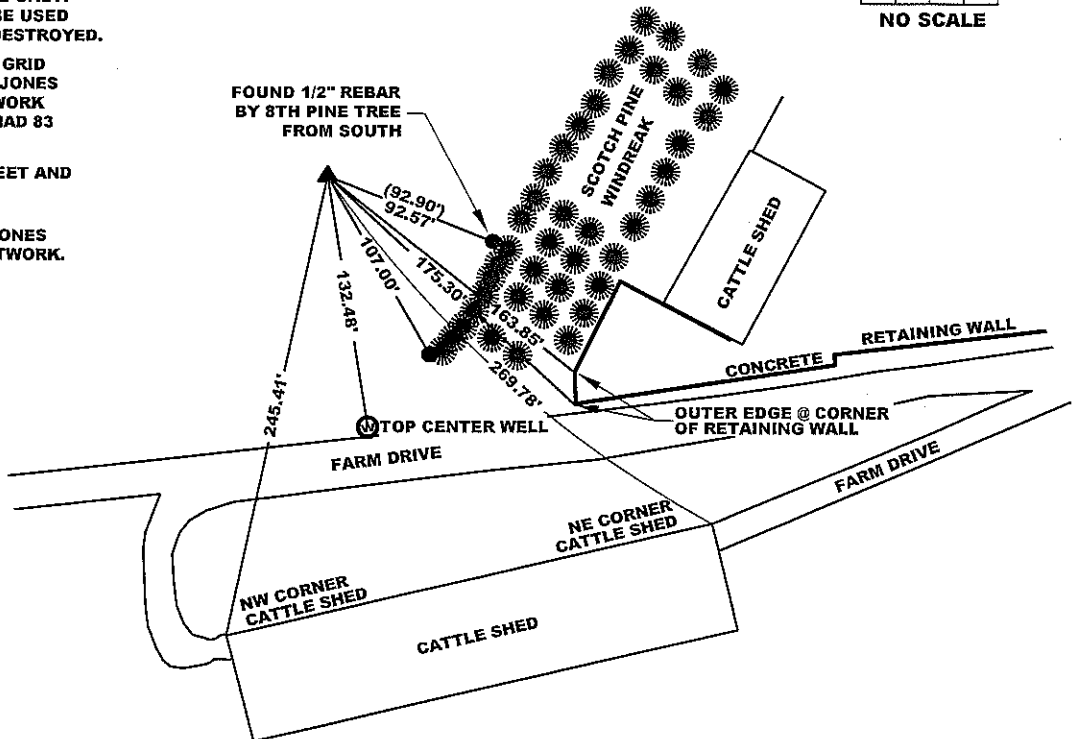
STATE PLANE COORDINATE  
 NAD 83 IOWA NORTH  
 N 3575337.97  
 E 5593961.84

CORNER SECTION TOWNSHIP RANGE  
 NE CORNER 12 T86N R2W



**NOTES:**

- 1) THE STATE PLANE COORDINATES AS SHOWN ARE FOR CONVENIENCE ONLY. THE TIES AS SHOWN SHOULD BE USED TO REPLACE THE CORNER, IF DESTROYED.
- 2) COORDINATES AS SHOWN ARE GRID COORDINATES AND BASED ON JONES COUNTY G.P.S. CONTROL NETWORK WHICH IN TURN IS BASED ON NAD 83 IOWA NORTH DATUM.
- 3) ALL MEASUREMENTS ARE IN FEET AND DECIMALS THEREOF.
- 4) \* GRID DISTANCE, BASED ON JONES COUNTY G.P.S. CONTROL NETWORK.



**"SURVEY MARKER" SIGN**



**SURVEY DISC**



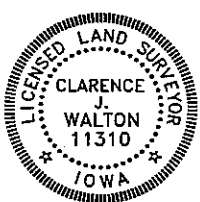
**LEGEND**

- OPC ORANGE PLASTIC CAP
- ( ) RECORDED AS
- FOUND 1/2" REBAR - NO CAP

PREVIOUSLY RECORDED IN RECORDER'S DOCUMENT 2000

MONUMENT DESCRIPTION AND HOW ESTABLISHED FOUND STONE 18" DEEP PER RECORDED TIES. ALSO FOUND PERMANENT MAGNET ATOP STONE.  
 ADDED MORE TIES AND PROVIDED STATE PLANE COORDINATES.

DATA COLLECTOR. DATE OF SURVEY: 9/22/11



I hereby certify that this land surveying document and the related survey work was performed by me or under my direct personal supervision and that I am a duly registered Land Surveyor under the laws of the State of Iowa.

Signed: *Clarence J. Walton* 12/30/11  
 Clarence J. Walton, L.S.  
 My Registration Renewal Date is December 31, 2011  
 Iowa License Number 11310  
 Pages or sheets covered by this seal: 1 of 1.

- A. THERE IS NO CERTIFICATE FOR THE CORNER ON FILE WITH THE RECORDER OF THE COUNTY IN WHICH THE CORNER IS LOCATED.
- B. THE CORNER MONUMENT HAS BEEN REPLACED OR MODIFIED.
- C. THE SURVEYOR IN RESPONSIBLE CHARGE OF THE LAND SURVEYING ACCEPTS A CORNER POSITION THAT DIFFERS FROM THAT SHOWN IN THE PUBLIC RECORDS OF THE COUNTY IN WHICH THE CORNER IS LOCATED.
- D. THE REFERENCE TIES REFERRED TO IN AN EXISTING PUBLIC RECORD NO LONGER EXIST.
- E. EXISTING CORNER TIES UPDATED.

**CORNERS TO BE INDEXED**

CORNER	SECTION	TOWNSHIP	RANGE
NE CORNER	12	86N	2W
SE CORNER	1	86N	2W
SW CORNER	6	86N	1W
NW CORNER	7	86N	1W

**JONES COUNTY ENGINEER'S OFFICE**



19501 HWY. 64, ANAMOSA, IOWA 52205  
 (319) 462-3785

RECEIVED

OCT 24 2000

JONES COUNTY ENGINEER

Prepared by Wm. Burger Land Surveyors

510 3rd Street West Court, Worthington, Iowa

Phone 319 - 855 2028

UNITED STATES PUBLIC LAND SURVEY CORNER CERTIFICATE

Land Survey Monuments situated in Section 7, Township 86N, Range 1W, of the Fifth Principal Meridian, Jones County, Iowa. Previously recorded in N/A in the Office of the County Recorder

Monument Description and Remarks: (No Corner Certificates found at the County Recorders Office)

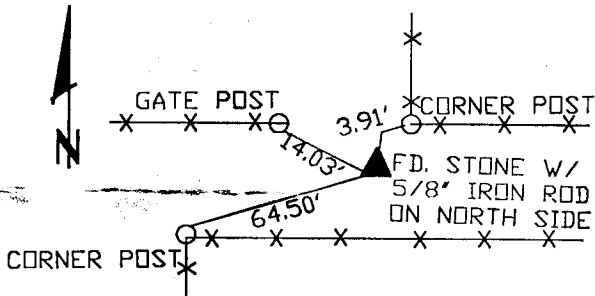
NW CORNER NW1/4 NW FRAC. 1/4 - FD. 2' IRON PIPE BURIED 24" DEEP W/STONE PLACED OVER THE PIPE

NE CORNER NE1/4 NW FRAC. 1/4 - FD. STONE W/ 5/8" IRON ROD ON NORTH SIDE OF STONE

SE CORNER NE1/4 NW FRAC. 1/4 - SET 1/2" IRON ROD W/YELLOW LS CAP #12642 - SET ON LINE AND MIDWAY BETWEEN THE N1/4 CORNER AND THE CENTER OF SECTION

PLAN VIEW

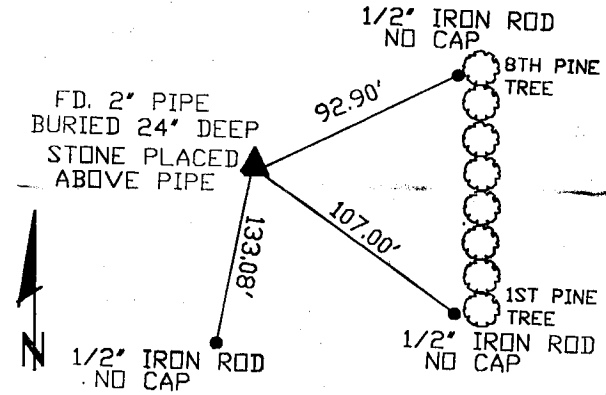
NW CORNER NW1/4 NW FRAC. 1/4



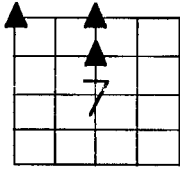
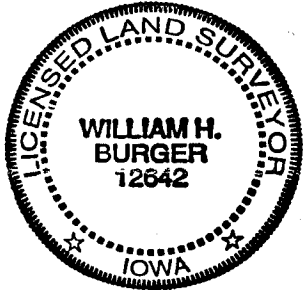
SET "X" NAILS AT ALL TIE POINTS

10.25.2

NW CORNER NW1/4 NW FRAC. 1/4

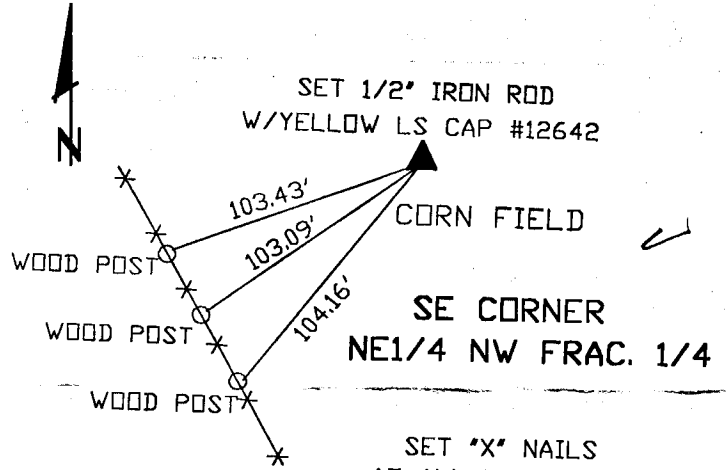


10.25.2



SEAL

SEC. 7 TWP. 86N RANGE 1W



SET "X" NAILS AT ALL TIE POINTS

I hereby certify that this land surveying document was prepared and related survey work was performed by me or under my direct personal supervision and that I am a duly licensed Land Surveyor under the laws of the State of Iowa.

William H. Burger 10/23/2000
Date

License number 12642

My license renewal date is December 31, 2000

Pages or Sheets covered by this seal: Sheet 1 of 1

CORNERS TO BE INDEXED

NE CORNER NE1/4 NW FRAC. 1/4 7 86N 1W

SE CORNER NE1/4 NW FRAC. 1/4 7 86N 1W

NW CORNER NW1/4 NW FRAC. 1/4 7 86N 1W

THIS IS NOT A CERTIFICATION

C

JONES COUNTY ENGINEER'S OFFICE, 19501 HWY. 64, ANAMOSA, IOWA, 52205 (319)462-3785

# UNITED STATES PUBLIC LAND SURVEY CORNER CERTIFICATE

LAND SURVEY MONUMENTS SITUATED IN SECTION 12, TOWNSHIP 86 NORTH, RANGE 2 WEST OF THE 5TH P.M., JONES COUNTY, IOWA

**CORNERS TO BE INDEXED**

CORNER	SECTION	TOWNSHIP	RANGE
N-QUARTER	12	86N	2W

OFFICE FILE NO. \_\_\_\_\_  
86212c\_071604.tif

REF: 10-17-90 LARRY McQUIRE LS-9019

**1443**

PREVIOUSLY RECORDED IN BOOK \_\_\_\_\_, PAGE \_\_\_\_\_  
MONUMENT DESCRIPTION AND HOW ESTABLISHED SET  
CONCRETE MONUMENT 2' DOWN. TIES AS INDICATED. NORTH QUARTER CORNER, SECTION 12, TOWNSHIP 86 NORTH, RANGE 2 WEST OF THE 5TH PRINCIPAL, JONES COUNTY, IOWA.

**CORNERS TO BE INDEXED**

CORNER	SECTION	TOWNSHIP	RANGE
NE-CORNER	12	86N	2W

OFFICE FILE NO. \_\_\_\_\_  
86212e\_071604.tif

DRAWN: 8-19-04

PREVIOUSLY RECORDED IN BOOK \_\_\_\_\_, PAGE \_\_\_\_\_  
MONUMENT DESCRIPTION AND HOW ESTABLISHED FOUND  
LIMESTONE 2' BELOW SURFACE (10-17-90). IN 1939 JONES COUNTY SURVEY CREW SET 3"x9"x15" LIMESTONE OVER WAGON HUB OVER 1/2" X35" IRON PIN. TIES AS INDICATED. NORTH EAST CORNER SECTION 12, TOWNSHIP 86 NORTH, RANGE 2 WEST OF 5TH PRINCIPAL MERIDIAN, JONES COUNTY, IOWA.

**CORNERS TO BE INDEXED**

CORNER	SECTION	TOWNSHIP	RANGE
--------	---------	----------	-------

OFFICE FILE NO. \_\_\_\_\_

PREVIOUSLY RECORDED IN BOOK \_\_\_\_\_, PAGE \_\_\_\_\_  
MONUMENT DESCRIPTION AND HOW ESTABLISHED \_\_\_\_\_

**CORNERS TO BE INDEXED**

CORNER	SECTION	TOWNSHIP	RANGE
--------	---------	----------	-------

OFFICE FILE NO. \_\_\_\_\_

PREVIOUSLY RECORDED IN BOOK \_\_\_\_\_, PAGE \_\_\_\_\_  
MONUMENT DESCRIPTION AND HOW ESTABLISHED \_\_\_\_\_

~~I hereby declare that this plat, survey or report was made by me or under my direct personal supervision and that I am a duly registered Land Surveyor under the laws of the State of Iowa.~~

Signed: \_\_\_\_\_

SEAL

JONES COUNTY ENGINEER'S OFFICE

19501 HWY. 64,  
ANAMOSA, IOWA,  
52205 (319)462-3785