

UNITED STATES PUBLIC LAND SURVEY CORNER CERTIFICATE

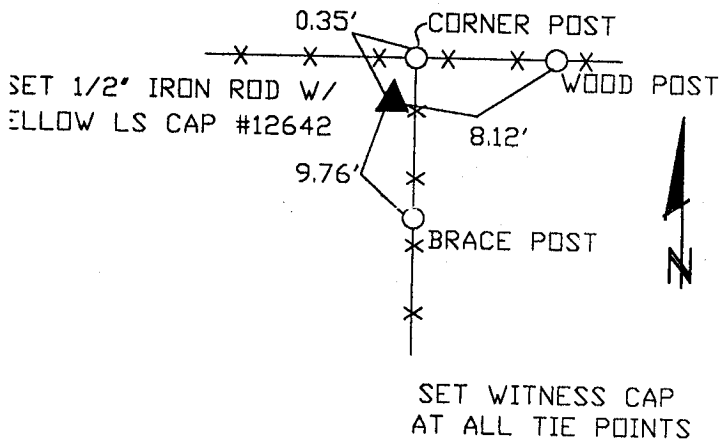
Land Survey Monuments situated in Section 13, Township 86N, Range 2W, of the Fifth Principal Meridian, Jones County, Iowa. Previously recorded in N/A in the Office of the County Recorder

Monument Description and Remarks: (No Corner Certificates found at the County Recorder's Office)

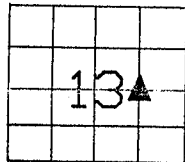
NW CORNER NE1/4 SE1/4 - SET 1/2" IRON ROD W/YELLOW LS CAP #12642 - USED EXISTING FENCELINE INFORMATION AND SET MONUMENT AT CORNER POST

PLAN VIEW

NW CORNER NE1/4 SE1/4



86213n



SEAL SEC. 13 TWP. 86N RANGE 2W

I hereby certify that this land surveying document was prepared and related survey work was performed by me or under my direct personal supervision and that I am a duly licensed Land Surveyor under the laws of the State of Iowa.

William H. Burger 4/24/02
 William H. Burger Date

License number 12642

My license renewal date is December 31, 2002

Pages or Sheets covered by this seal: Sheet 1 of 1

CORNERS TO BE INDEXED

NW CORNER NE1/4 SE1/4 13 86N 2W