

Marie Krutzfield, Recorder  
 Jones County, Iowa

Prepared by Wm. Burger LandSurveyors 510 3rd Street West Court, Worthington, Iowa phone 505 - 555 2025

**UNITED STATES PUBLIC LAND SURVEY CORNER CERTIFICATE**

Land Survey Monuments situated in Section 15, Township 86N, Range 2W, of the Fifth Principal Meridian, Jones County, Iowa. Previously recorded in N/A in the Office of the County Recorder

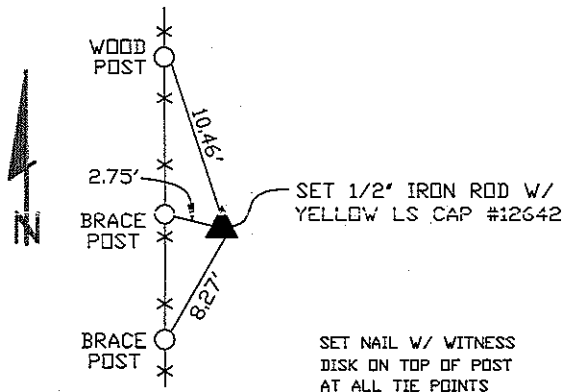
Monument Description and Remarks: (No Corner Certificates found at the County Recorders Office)

NE CORNER - SET 1/2" IRON ROD W/ YELLOW LS CAP #12642 - SET ON LINE WITH THE NW CORNER AND THE N1/4 CORNER AND DOUBLED THE DISTANCE

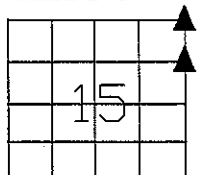
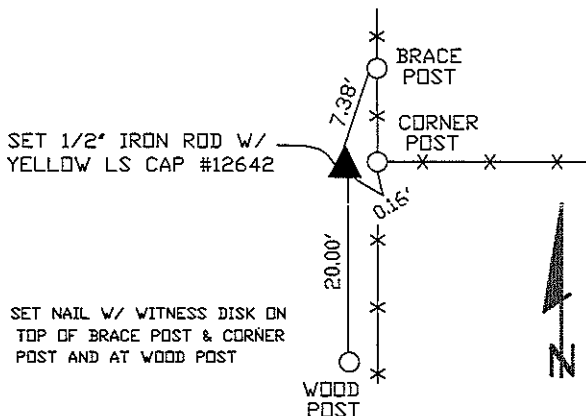
SE CORNER NE1/4 NE1/4 - SET 1/2" IRON ROD W/ YELLOW LS CAP #12642 - USED EXISTING FENCELINE EVIDENCE AND SET AT THE CORNER POST

**PLAN VIEW**

NE CORNER



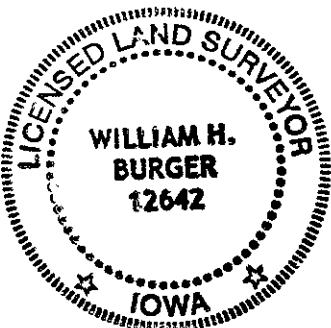
SE CORNER NE1/4 NE1/4



SEC. 15 TWP. 86N RANGE 2W

CORNERS TO BE INDEXED

NE CORNER	15	86N	2W
SE CORNER NE1/4 NE1/4	15	86N	2W



I hereby certify that this land surveying document was prepared and related survey work was performed by me or under my direct personal supervision and that I am a duly licensed Land Surveyor under the laws of the State of Iowa.

*William H. Burger* 4/12/07  
 William H. Burger Date

License number 12642

My license renewal date is December 31, 2008

Pages or Sheets covered by this seal: Sheet 1 of 1