

2006 0818

FILED
RECORDERS OFFICE
JONES COUNTY IOWA

06 MAR -7 AM 9:56

MARKIE KRUTZFIELD
RECORDER 7.00 pd

PREPARED BY: J. DAVID GIBBS 105 WEST MAIN STREET MANCHESTER, IA 52057, 563-927-2434

UNITED STATES PUBLIC LAND SURVEY CORNER CERTIFICATE OF

Land Survey Monuments situated in Section 16, Township T86N, Range R2W, of the Fifth Principal Meridian, Jones County, Iowa. Previously recorded in Not Recorded in County Recorder's Office.

(book, page, document number, etc.)

(Show reason for preparing this certificate, the evidence and detailed procedures used in establishing the corner positions monumentation found or placed.)

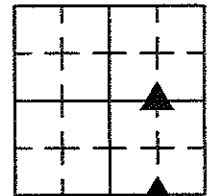
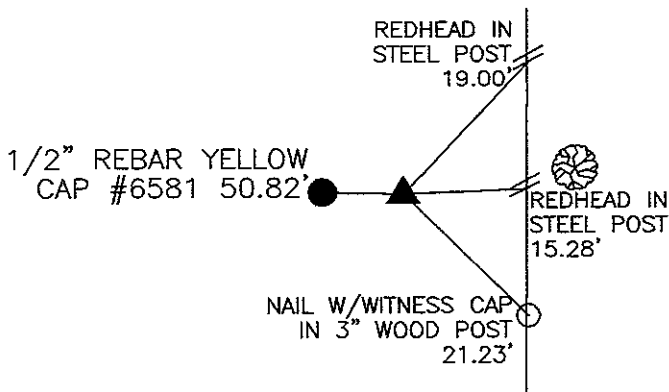
Monument Description and Remarks:

SW Corner SE 1/4 - SE 1/4, Set 1/2" Rebar w/Orange Cap #8419, at theoretical location.

NE Corner NW 1/4 - SE 1/4, Set 1/2" Rebar w/Orange Cap #8419, at theoretical location.

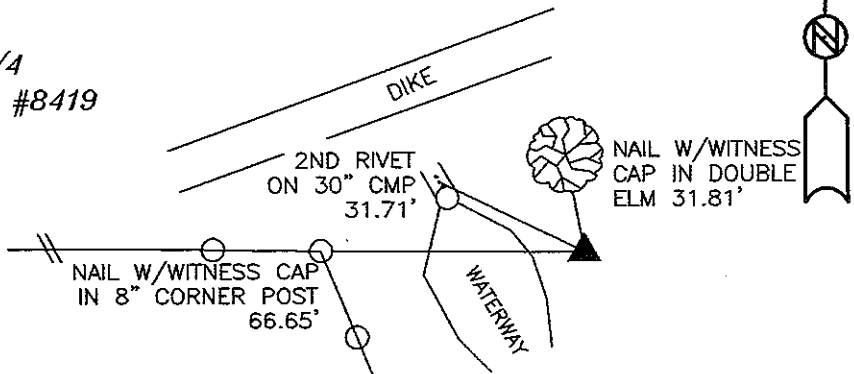
PLAN VIEW

(Show a minimum of three reference ties to durable physical objects, relevant monuments and physical conditions that will enable recovery of the corner.)



SECTION 16
T86N, R2W

NE CORNER NW 1/4 - SE 1/4
SET 1/2" REBAR W/ORANGE CAP #8419
BURIED 12"



SW CORNER SE 1/4 - SE 1/4
SET 1/2" REBAR W/ORANGE CAP #8419
ALL DISTANCES W/SLOPE CHAIN

TIES ARE TO CORNERS IN PLAT OF PARCEL #2006-20, SEC. 16, T88N, R2W. G.E.S. #05-91

I hereby certify that this land surveying document was prepared and the related survey work was performed by me or under my direct personal supervision and that I am a duly licensed land surveyor under the laws of the State of Iowa.

Signature

J. David Gibbs
J. David Gibbs

Seal

Date 3/1/06 Lic. No. 8419

My license renewal date is December 31, 2006

List Corners to be Indexed:

Corners	Section	Township	Range
SW COR. SE1/4-SE1/4	16	T86N	R2W
NE COR. NW1/4-SE1/4			

