

2006 0815

FILED
RECORDERS OFFICE
JONES COUNTY IOWA

05 MAR -7 AM 9:53

MARIE KRUTZFIELD
RECORDER 7.00 pd

PREPARED BY: J. DAVID GIBBS 105 WEST MAIN STREET MANCHESTER, IA 52057. 563-927-2434

UNITED STATES PUBLIC LAND SURVEY CORNER CERTIFICATE OF

Land Survey Monuments situated in Section 16, Township T86N, Range R2W of the Fifth Principal Meridian, Jones County, Iowa. Previously recorded in Not Recorded in County Recorder's Office.

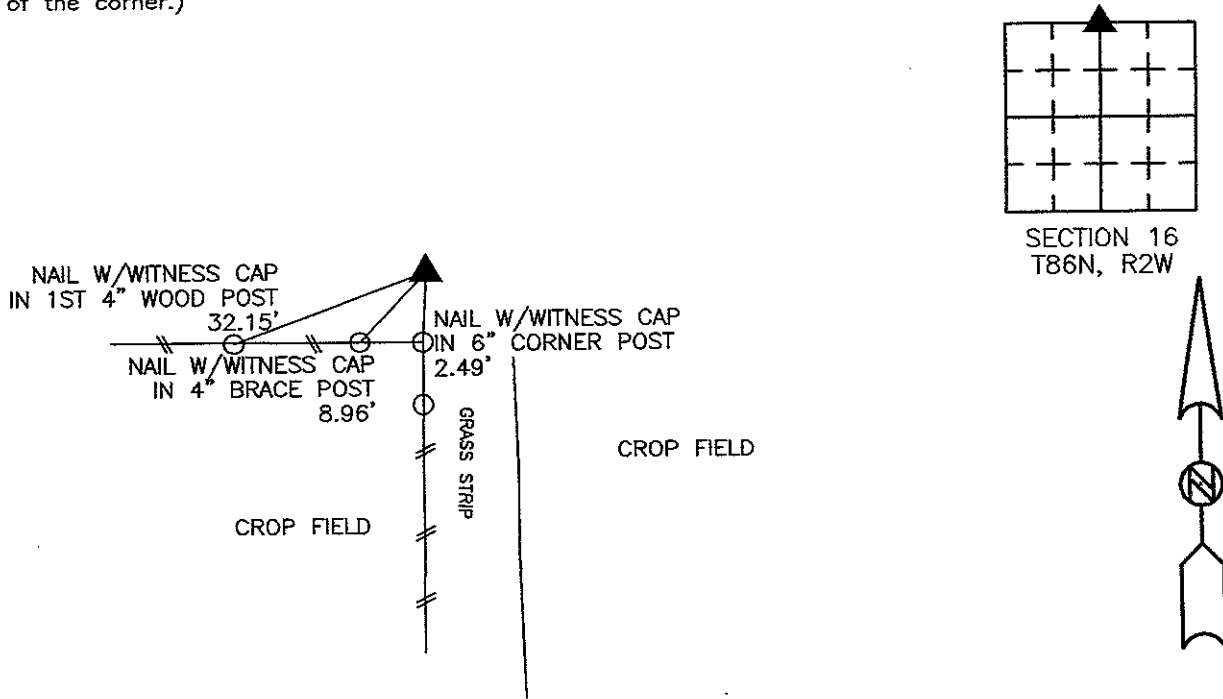
(book, page, document number, etc.)

(Show reason for preparing this certificate, the evidence and detailed procedures used in establishing the corner positions monumentation found or placed.)

Monument Description and Remarks: N 1/4 Corner, Set 1/2" Rebar w/Orange Cap #8419 using the NW Corner and fenceline to locate the north line of the NW 1/4, then used original government distance of 39.82 chains (2628.12') from NE Corner and adding one chain (66.00'). This distance of 40.82 chains fits the fence corner and the southerly extension of Jay Road. This location for the N 1/4 Corner also fits the fence corner at the NE Corner NW 1/4 - NW 1/4 and subsequent breakdown of the section closely matches the fences in the SE 1/4.

PLAN VIEW

(Show a minimum of three reference ties to durable physical objects, relevant monuments and physical conditions that will enable recovery of the corner.)



**N 1/4 CORNER
SET 1/2" REBAR W/ORANGE CAP #8419**

TIES ARE TO CORNERS IN PLAT OF PARCEL #2006-20, SEC. 16, T88N, R2W. G.E.S. #05-91

I hereby certify that this land surveying document was prepared and the related survey work was performed by me or under my direct personal supervision and that I am a duly licensed land surveyor under the laws of the State of Iowa.

Signature J. David Gibbs
J. David Gibbs

Seal

Date 3/1/06 Lic. No. 8419

My license renewal date is December 31, 2006

List Corners to be Indexed:

Corners	Section	Township	Range
N 1/4 Corner	16	T86N	R2W

