

06 MAR -7 AM 9:52

MARIE KRUTZFIELL
RECORDER 7.00 pd

PREPARED BY: J. DAVID GIBBS 105 WEST MAIN STREET MANCHESTER, IA 52057, 563-927-2434

UNITED STATES PUBLIC LAND SURVEY CORNER CERTIFICATE OF

Land Survey Monuments situated in Section 16, Township T86N, Range R2W, of the Fifth Principal Meridian, Jones County, Iowa. Previously recorded in Not Recorded in County Recorder's Office.

(book, page, document number, etc.)

(Show reason for preparing this certificate, the evidence and detailed procedures used in establishing the corner positions monumentation found or placed.)

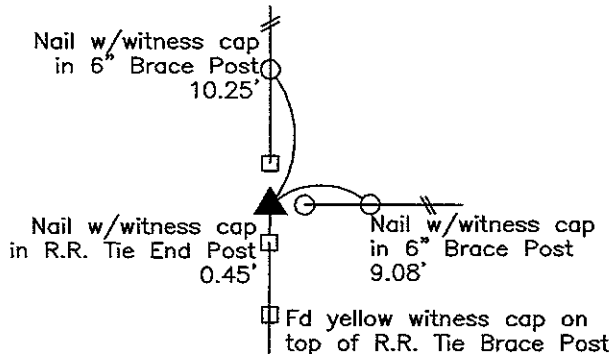
Monument Description and Remarks: NW Corner, Found 5/8" Rebar

NE Corner - NW 1/4 - SW 1/4, Found 1/2" Rebar w/Alum. Cap #5227

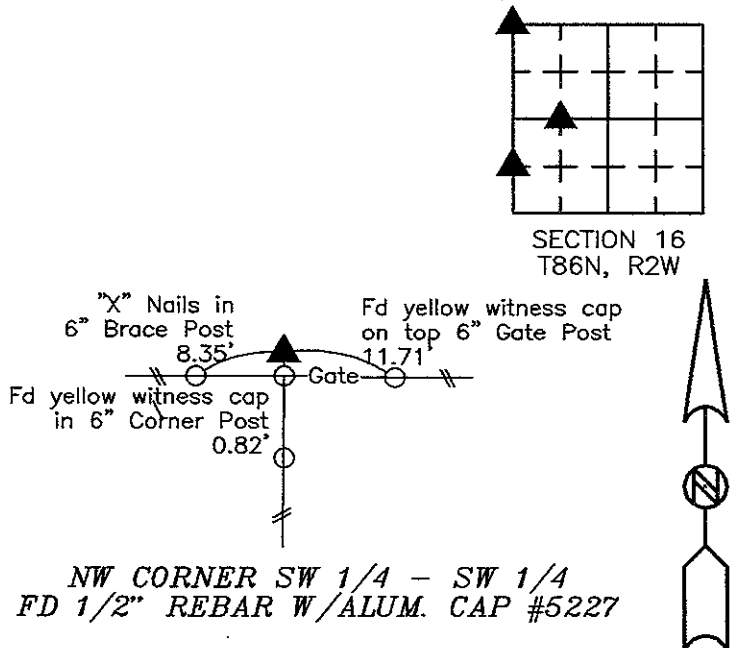
NW Corner - SW 1/4 - SW 1/4, Found 1/2" Rebar w/Alum. Cap #5227

PLAN VIEW

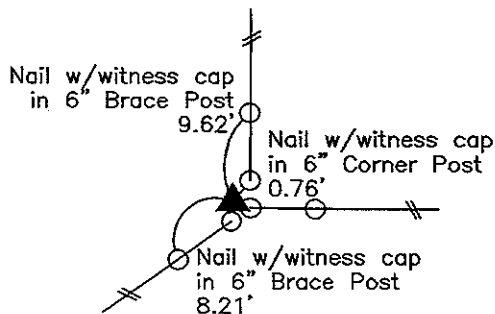
(Show a minimum of three reference ties to durable physical objects, relevant monuments and physical conditions that will enable recovery of the corner.)



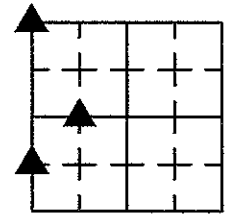
**NW CORNER
FOUND 5/8" REBAR**



**NW CORNER SW 1/4 - SW 1/4
FD 1/2" REBAR W/ALUM. CAP #5227**



**NE CORNER NW 1/4 - SW 1/4
FD 1/2" REBAR W/ALUM. CAP #5227**



SECTION 16
T86N, R2W



TIES ARE TO CORNERS IN PLAT OF PARCEL #2006-20, SEC. 16, T86N, R2W. G.E.S. #05-91

I hereby certify that this land surveying document was prepared and the related survey work was performed by me or under my direct personal supervision and that I am a duly licensed land surveyor under the laws of the State of Iowa.

Signature J. David Gibbs
J. David Gibbs

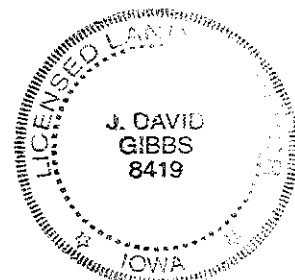
Seal

Date 3/1/06 Lic. No. 8419

My license renewal date is December 31, 2006

List Corners to be Indexed:

Corners	Section	Township	Range
NW Corner	16	T86N	R2W
NW Cor. SW1/4-SW1/4			
NE Cor. NW1/4-SW1/4			



THIS IS NOT A CERTIFICATION

D

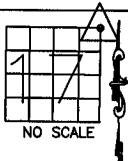
JONES COUNTY ENGINEER'S OFFICE, 19501 HWY. 64, ANAMOSA, IOWA, 52205 (319)462-3785

UNITED STATES PUBLIC LAND SURVEY CORNER CERTIFICATE

LAND SURVEY MONUMENTS SITUATED IN SECTION 17, TOWNSHIP 86 NORTH, RANGE 2 WEST OF THE 5TH P.M., JONES COUNTY, IOWA

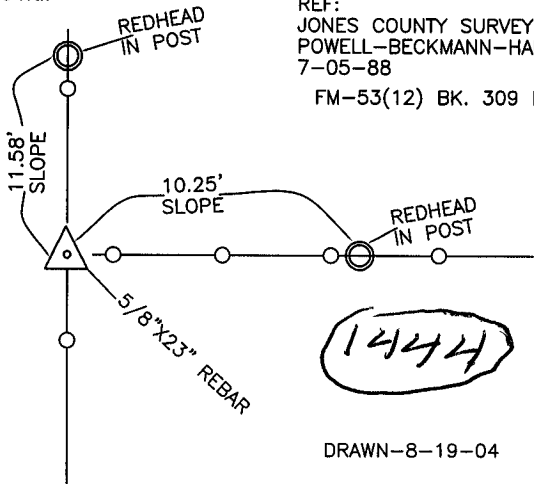
CORNERS TO BE INDEXED

CORNER SECTION TOWNSHIP RANGE
NORTHEAST 17 86N 2W
OFFICE FILE NO.



86217e_081904.tif

REF:
JONES COUNTY SURVEY CREW:
POWELL-BECKMANN-HAUGLIE
7-05-88
FM-53(12) BK. 309 P-46



DRAWN-8-19-04

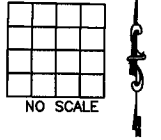
PREVIOUSLY RECORDED IN BOOK _____, PAGE _____
MONUMENT DESCRIPTION AND HOW ESTABLISHED SET OR FOUND _____

NOT INDICATED ON TIE SHEET. TIES SLOPE MEASURED BY JONES COUNTY SURVEY CREW (7-05-88) NORTHEAST CORNER SECTION 17, TOWNSHIP 86 NORTH, RANGE 2 WEST OF 5TH PRINCIPAL MERIDIAN, JONES COUNTY, IOWA.

86217e-011904.tif

CORNERS TO BE INDEXED

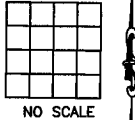
CORNER SECTION TOWNSHIP RANGE
OFFICE FILE NO.



PREVIOUSLY RECORDED IN BOOK _____, PAGE _____
MONUMENT DESCRIPTION AND HOW ESTABLISHED _____

CORNERS TO BE INDEXED

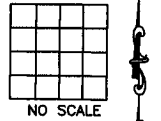
CORNER SECTION TOWNSHIP RANGE
OFFICE FILE NO.



PREVIOUSLY RECORDED IN BOOK _____, PAGE _____
MONUMENT DESCRIPTION AND HOW ESTABLISHED _____

CORNERS TO BE INDEXED

CORNER SECTION TOWNSHIP RANGE
OFFICE FILE NO.



PREVIOUSLY RECORDED IN BOOK _____, PAGE _____
MONUMENT DESCRIPTION AND HOW ESTABLISHED _____

~~I hereby declare that this plat, survey or report was made by me or under my direct personal supervision and that I am a duly registered Land Surveyor under the laws of the State of Iowa.~~

Signed:

SEAL

JONES COUNTY ENGINEER'S OFFICE

19501 HWY. 64,
ANAMOSA, IOWA,
52205 (319)462-3785