

2006 1205

FILED
RECORDERS OFFICE
JONES COUNTY IOWA

06 APR -3 PH 3:20

MARIE KRUTZFIELD
RECORDER 7.00 Pd

Prepared by Wm. Burger Land Surveyors 510 3rd Street West Court, Worthington, Iowa Phone 563 - 855 2828

UNITED STATES PUBLIC LAND SURVEY CORNER CERTIFICATE

Land Survey Monuments situated in Section 18, Township 86N, Range 2W, of the Fifth Principal Meridian, Jones County, Iowa. Previously recorded in SEE NOTE. In the Office of the County Recorder

Monument Description and Remarks:

NE CORNER - FOUND 5/8" IRON ROD W/ NO CAP

NW CORNER NE1/4 NE1/4 - SET 1/2" IRON ROD W/ YELLOW LS CAP #12642 - USED EXISTING FENCE LINE EVIDENCE AND SET MIDWAY BETWEEN THE NE1/4 CORNER AND THE NE CORNER

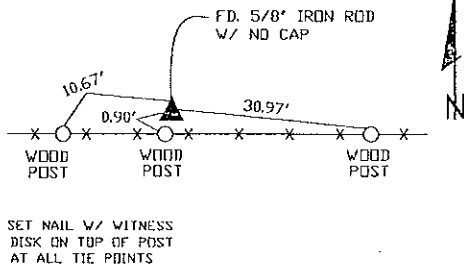
SW CORNER NE1/4 NE1/4 - SET 1/2" IRON ROD W/ YELLOW LS CAP #12642 - RUN STRAIGHT LINES FROM OPPOSITE 1/4 1/4 CORNERS AND SET AT THE POINT OF INTERSECTION

SE CORNER SW1/4 NE1/4 - SET 1/2" IRON ROD W/ YELLOW LS CAP #12642 - SET ON LINE AND MIDWAY BETWEEN THE CENTER OF SECTION AND THE E1/4 CORNER

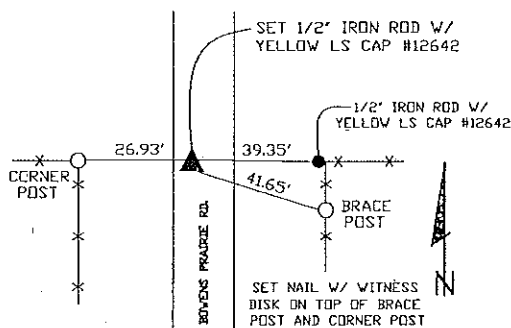
NOTE: THE NE CORNER WAS PREVIOUSLY RECORDED IN THE OFFICE OF THE JONES COUNTY RECORDER INST. # 2000-3408

PLAN VIEW

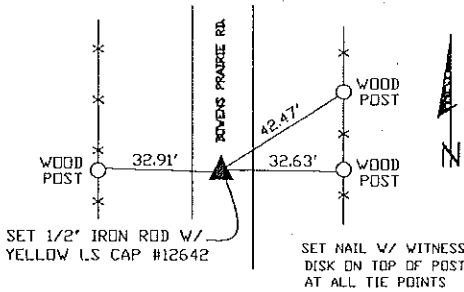
NE CORNER



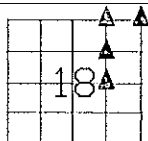
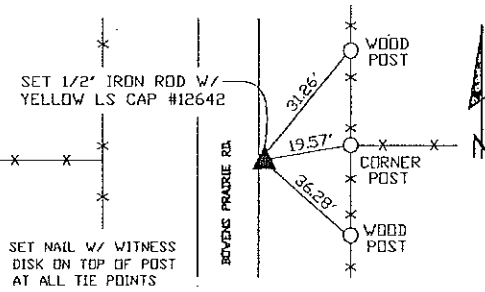
NW CORNER NE1/4 NE1/4



SW CORNER NE1/4 NE1/4



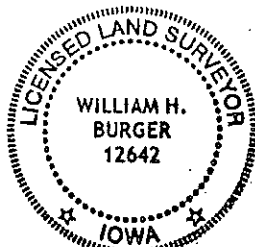
SE CORNER SW1/4 NE1/4



SEC. 18 TWP. 86N RANGE 2W

CORNERS TO BE INDEXED

| | | | |
|-----------------------|----|-----|----|
| NE CORNER | 18 | 86N | 2W |
| NW CORNER NE1/4 NE1/4 | 18 | 86N | 2W |
| SW CORNER NE1/4 NE1/4 | 18 | 86N | 2W |
| SE CORNER SW1/4 NE1/4 | 18 | 86N | 2W |



I hereby certify that this land surveying document was prepared and related survey work was performed by me or under my direct personal supervision and that I am a duly licensed Land Surveyor under the laws of the State of Iowa.

William H. Burger 3/31/06
Date

License number 12642

My license renewal date is December 31, 2006

Pages or Sheets covered by this seal Sheet 1 of 1