

UNITED STATES PUBLIC LAND SURVEY CORNER CERTIFICATE

OF

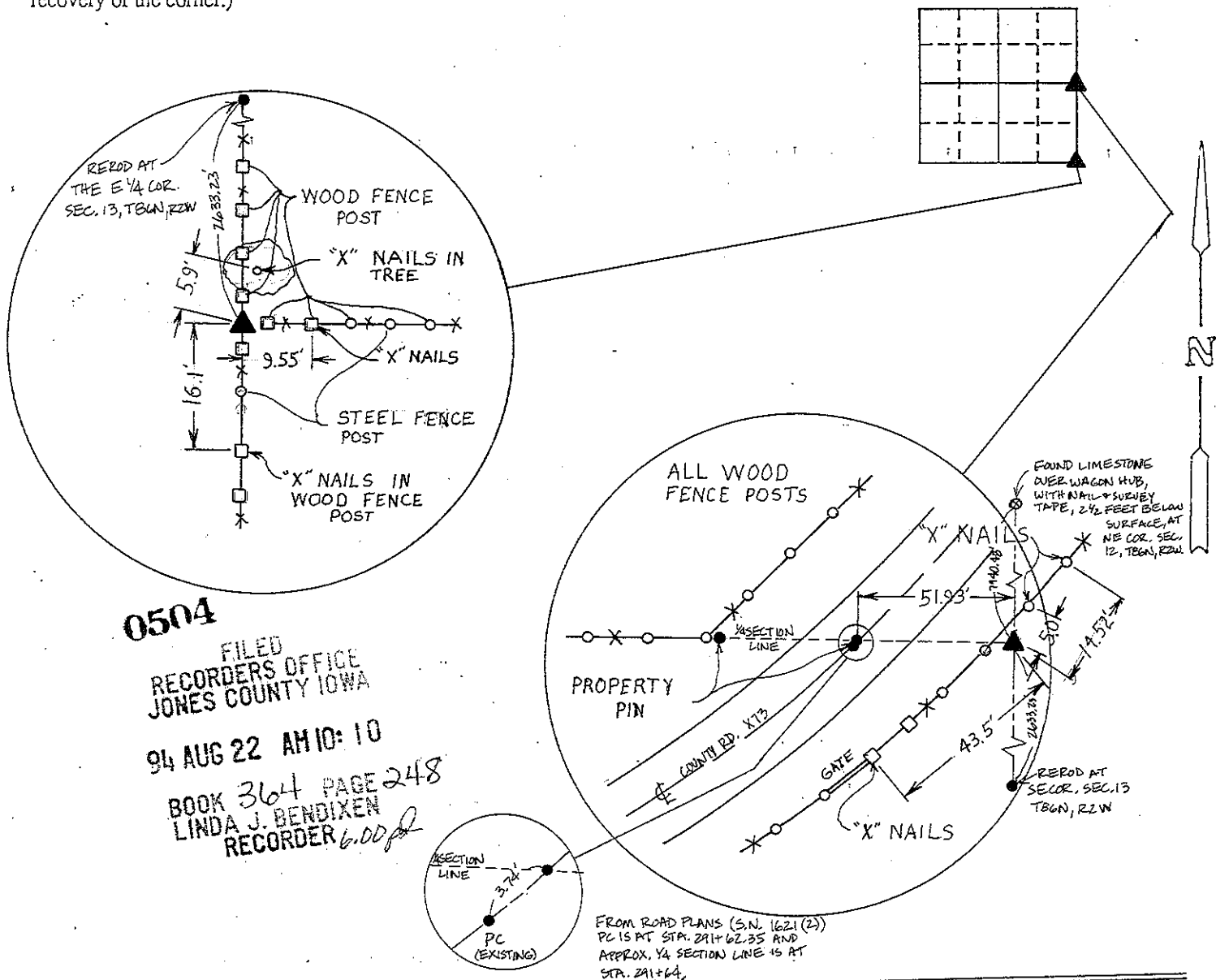
Land Survey Monuments situated in Section 13, Township 86, Range 2W, of the Fifth Principal Meridian, JONES County, Iowa. Previously recorded in Book _____, Page _____.

(Show reason for preparing this certificate, the evidence and detailed procedures used in establishing the corner positions and monumentation found or placed.)

Monument Description and Remarks: PLACED 5/8" ROD @ SE CORNER SECTION 13, T86N, R2W AND @ E 1/4 CORNER SECTION 13, T86N, R2W. BOTH w/ CAP #4016.

PLAN - VIEW

(Show a minimum of three reference ties to durable physical objects, relevant monuments and physical conditions that will enable recovery of the corner.)



0504
 FILED
 RECORDERS OFFICE
 JONES COUNTY IOWA
 94 AUG 22 AM 10:10
 BOOK 364 PAGE 248
 LINDA J. BENDIXEN
 RECORDER *b.o.d.*

I hereby certify that the survey work was completed and this certificate was prepared by me or under my direct personal supervision and that I am a duly registered land surveyor under the laws of the state of Iowa.

John L. White

REGISTERED LAND SURVEYOR NO. 4016

SEAL



List Corners to be Indexed

Corners	Section	Twp	Range
SE	13	86N	2W
E 1/4	13	86N	2W