

Jones County Marie Krutzfield Recorder  
 Fee Book 2012 1407  
 05/17/2012 @1035AM # Pages 1  
 ZSC SEC COR CERT  
 Total Fees: \$0.00

COPY

PREPARED BY  
 CLARENCE J. WALTON, JONES COUNTY ENGINEER'S OFFICE, 19501 HWY. 64, ANAMOSA, IOWA, 52205 (319) 462-3785

# UNITED STATES PUBLIC LAND SURVEY CORNER CERTIFICATE

LAND SURVEY MONUMENTS SITUATED IN SECTION 22, TOWNSHIP 86 NORTH,  
 RANGE 2 WEST OF THE 5TH PRINCIPAL MERIDIAN, JONES COUNTY, IOWA.

STATE PLANE COORDINATE  
 NAD 83 IOWA NORTH  
 N 3562047.83  
 E 5583672.47

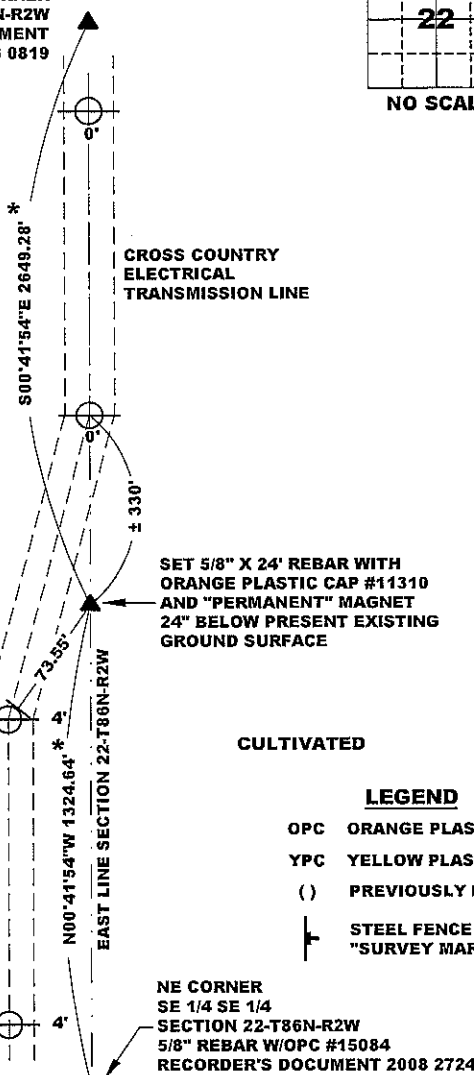
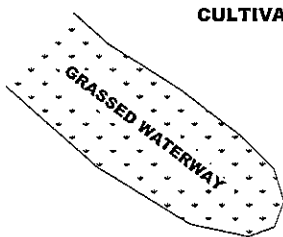
CORNER SECTION TOWNSHIP RANGE  
 E 1/4 CORNER 22 T86N R2W



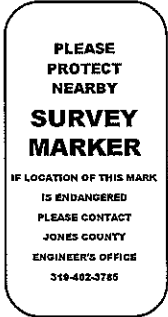
NOTES:

- 1) THE STATE PLANE COORDINATES AS SHOWN ARE FOR CONVENIENCE ONLY. THE TIES AS SHOWN SHOULD BE USED TO REPLACE THE CORNER, IF DESTROYED.
- 2) COORDINATES AS SHOWN ARE GRID COORDINATES AND BASED ON JONES COUNTY G.P.S. CONTROL NETWORK WHICH IN TURN IS BASED ON NAD 83 IOWA NORTH DATUM.
- 3) ALL MEASUREMENTS ARE IN FEET AND DECIMALS THEREOF.
- 4) \* GRID DISTANCE, BASED ON JONES COUNTY G.P.S. CONTROL NETWORK.

NE CORNER  
 SECTION 22-T86N-R2W  
 BROKEN CONCRETE MONUMENT  
 RECORDER'S DOCUMENT 2006 0819



"SURVEY MARKER" SIGN



SURVEY DISC



SET "SURVEY MARKER" SIGN AND PLASTIC SURVEY DISC IN 6TH CROSS COUNTRY ELECTRICAL TRANSMISSION POLE SOUTH OF CROSSING WITH BUTTERFIELD ROAD

SET 5/8" X 24' REBAR WITH ORANGE PLASTIC CAP #11310 AND "PERMANENT" MAGNET 24" BELOW PRESENT EXISTING GROUND SURFACE

CULTIVATED

LEGEND

- OPC ORANGE PLASTIC CAP
- YPC YELLOW PLASTIC CAP
- ( ) PREVIOUSLY RECORDED AS
- STEEL FENCE POST W/ "SURVEY MARKER" SIGN

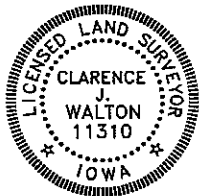
NE CORNER  
 SE 1/4 SE 1/4  
 SECTION 22-T86N-R2W  
 5/8" REBAR W/OPC #15084  
 RECORDER'S DOCUMENT 2008 2724

PREVIOUSLY RECORDED IN N/A

PAGE 1 of 1

MONUMENT DESCRIPTION AND HOW ESTABLISHED SET 5/8" X 24" REBAR WITH ORANGE PLASTIC CAP # 11310 AND "PERMANENT" MAGNET 24" BELOW PRESENT EXISTING GROUND SURFACE ON LINE AND AT PROPORTIONATE DISTANCE BETWEEN THE NE CORNER OF SECTION 22-T86N-R2W AND THE NE CORNER OF THE SE 1/4 SE 1/4 OF SAID SECTION 22. NO EVIDENCE WAS FOUND IN VICINITY OF WHERE CORNER WAS SET DUE TO CULTIVATION.

FIELD BOOK 341, PAGE 53 DATE OF SURVEY: 4/26/12



I hereby certify that this land surveying document and the related survey work was performed by me or under my direct personal supervision and that I am a duly registered Land Surveyor under the laws of the State of Iowa.  
 Signed: *Clarence J. Walton* 5/17/12  
 Clarence J. Walton, L.S.  
 My Registration Renewal Date is December 31, 2013  
 Iowa License Number 11310  
 Pages or sheets covered by this seal: 1 of 1.

- A. THERE IS NO CERTIFICATE FOR THE CORNER ON FILE WITH THE RECORDER OF THE COUNTY IN WHICH THE CORNER IS LOCATED.
- B. THE CORNER MONUMENT HAS BEEN REPLACED OR MODIFIED.
- C. THE SURVEYOR IN RESPONSIBLE CHARGE OF THE LAND SURVEYING ACCEPTS A CORNER POSITION THAT DIFFERS FROM THAT SHOWN IN THE PUBLIC RECORDS OF THE COUNTY IN WHICH THE CORNER IS LOCATED.
- D. THE REFERENCE TIES REFERRED TO IN AN EXISTING PUBLIC RECORD NO LONGER EXIST.
- E. THIS CERTIFICATE FILED TO CORRECT PREVIOUS CERTIFICATE.

CORNER	SECTION	TOWNSHIP	RANGE
E 1/4 CORNER	22	86N	2W
W 1/4 CORNER	23	86N	2W

JONES COUNTY ENGINEER'S OFFICE



19501 HWY. 64, ANAMOSA, IOWA 52205  
 (319) 462-3785