

COPY

Marie Krutzfield, Recorder
Jones County, Iowa

PREPARED BY: MICHAEL J. WEBER, WEBER SURVEYING, LLC, 26789 46TH AVE, BERNARD, IA 52032 (563) 879-4173

UNITED STATES PUBLIC LAND SURVEY CORNER CERTIFICATE OF

LAND SURVEY MONUMENTS SITUATED IN SECTION 22, TOWNSHIP 86 NORTH, RANGE 2 WEST
OF THE FIFTH PRINCIPAL MERIDIAN, JONES COUNTY, IOWA.
PREVIOUSLY RECORDED NONE UNLESS OTHERWISE NOTED

(book, page, document number, etc.)

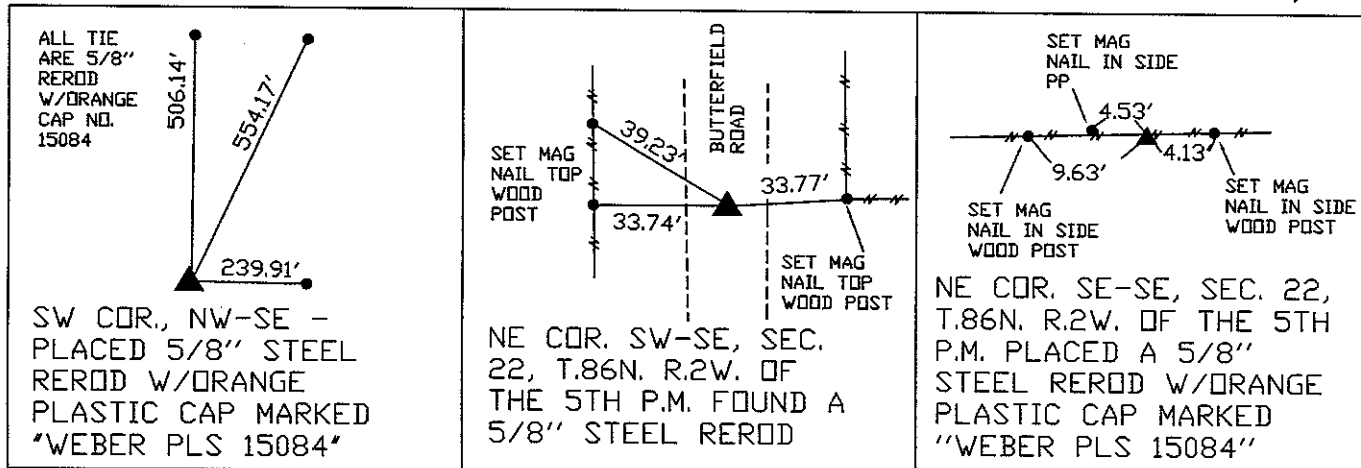
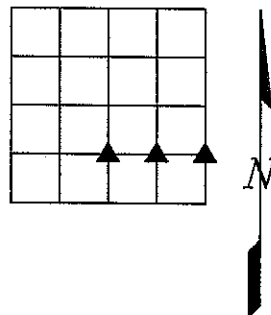
(Show reason for preparing this certificate, the evidence and detailed procedures used in establishing the corner positions and monumentation found or placed.)

Monument Description and Remarks:

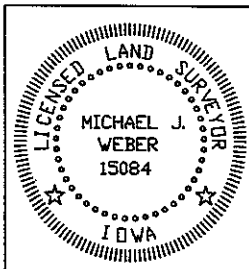
- NE COR. SE-SE, SEC. 22, T.86N. R.2W. OF THE 5TH P.M. PLACED A 5/8" STEEL REROD W/ORANGE PLASTIC CAP MARKED "WEBER PLS 15084" USING PLAT BK P PG 3
- NE COR. SW-SE, SEC. 22, T.86N. R.2W. OF THE 5TH P.M. FOUND A 5/8" STEEL REROD AS SHOWN ON PLAT BK P PG 3
- SW COR., NW-SE - PLACED 5/8" STEEL REROD W/ORANGE PLASTIC CAP MARKED "WEBER PLS 15084" ESTABLISHED CORNER ONLINE BETWEEN THE NE CORNER OF THE SE-SE AND THE NE CORNER OF THE SW-SE AND DOUBLING THE DISTANCE BETWEEN SAID CORNERS

PLAN - VIEW

(Show a minimum of three reference ties to durable physical objects, relevant monuments and physical conditions that will enable recovery of the corner.)



DWG NO: MAN-RAL
PARCEL 2008-107
PARCEL 2008-111



I HEREBY CERTIFY THAT THIS LAND SURVEYING DOCUMENT WAS PREPARED AND THE RELATED SURVEY WORK WAS PERFORMED BY ME OR UNDER MY DIRECT PERSONAL SUPERVISION AND THAT I AM A DULY LICENSED LAND SURVEYOR UNDER THE LAWS OF THE STATE OF IOWA.

Michael J. Weber September 15, 2008
MICHAEL J. WEBER (DATE)
LICENSE NUMBER 15084
MY LICENSE RENEWAL DATE IS DECEMBER 31, 2009

SHEETS COVERED BY THIS SEAL: This sheet

Corner	Sec	Twp	Range
NE Cor. SE-SE	22	86N	2W
NE Cor. SW-SE	22	86N	2W
SW Cor. NW-SE	22	86N	2W