

Jones County Marie Krutzfield Recorder
 Fee Book 2012 1410
 05/17/2012 @1039AM # Pages 1
 ZSC SEC COR CERT
 Total Fees: \$0.00

COPY

PREPARED BY
 CLARENCE J. WALTON, JONES COUNTY ENGINEER'S OFFICE, 19501 HWY. 64, ANAMOSA, IOWA, 52205 (319) 462-3785

UNITED STATES PUBLIC LAND SURVEY CORNER CERTIFICATE

LAND SURVEY MONUMENTS SITUATED IN SECTION 23, TOWNSHIP 86 NORTH,
 RANGE 2 WEST OF THE 5TH PRINCIPAL MERIDIAN, JONES COUNTY, IOWA.

STATE PLANE COORDINATE
 NAD 83 IOWA NORTH
 N 3563406.15
 E 5589051.53

CORNER SECTION TOWNSHIP RANGE
 NE CORNER 23 T86N R2W
 SE 1/4 NE 1/4

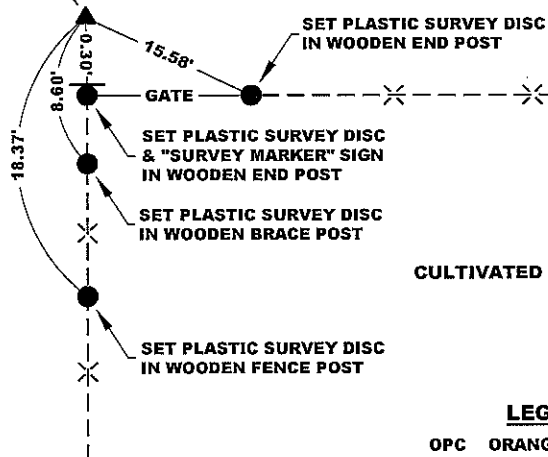


NOTES:

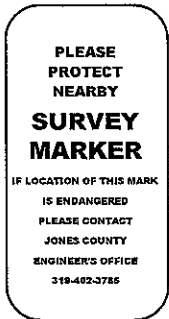
- 1) THE STATE PLANE COORDINATES AS SHOWN ARE FOR CONVENIENCE ONLY. THE TIES AS SHOWN SHOULD BE USED TO REPLACE THE CORNER, IF DESTROYED.
- 2) COORDINATES AS SHOWN ARE GRID COORDINATES AND BASED ON JONES COUNTY G.P.S. CONTROL NETWORK WHICH IN TURN IS BASED ON NAD 83 IOWA NORTH DATUM.
- 3) ALL MEASUREMENTS ARE IN FEET AND DECIMALS THEREOF.
- 4) * GRID DISTANCE, BASED ON JONES COUNTY G.P.S. CONTROL NETWORK.

CULTIVATED

NE CORNER
 SE 1/4 NE 1/4
 SECTION 23-T86N-R2W
 5/8" X 24" REBAR W/OPC #11310
 FLUSH WITH PRESENT EXISTING GROUND



"SURVEY MARKER" SIGN



SURVEY DISC



CULTIVATED

LEGEND

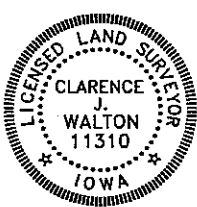
- OPC ORANGE PLASTIC CAP
- YPC YELLOW PLASTIC CAP
- () PREVIOUSLY RECORDED AS
- STEEL FENCE POST W/ "SURVEY MARKER" SIGN

PREVIOUSLY RECORDED IN N/A

PAGE 1 of 1

MONUMENT DESCRIPTION AND HOW ESTABLISHED SET 5/8" X 24" REBAR WITH ORANGE PLASTIC CAP # 11310 FLUSH WITH PRESENT EXISTING GROUND SURFACE NEXT TO END POST OF FENCE FROM SOUTH, IN LINE WITH FENCE FROM EAST AS THERE WAS NO BETTER EVIDENCE. PROBING AND SEARCHING WITH METAL DETECTOR REVEALED NOTHING OF INTEREST. SET "SURVEY MARKER" SIGN IN END POST AS WITNESS TO CORNER. COUNTY RECORDS DO NOT SHOW THERE HAVING BEEN SET ANY CORNER HERE. IF FENCE LINE FROM SOUTH PROJECTED NORTH, IT MATCHES WELL WITH FENCE CORNERS AND FENCE LINES ALONG THE WAY TO THE NE CORNER OF SECTION 14-T86N-R2W.

FIELD BOOK 341, PAGE 59 DATE OF SURVEY: 4/24/12



I hereby certify that this land surveying document and the related survey work was performed by me or under my direct personal supervision and that I am a duly registered Land Surveyor under the laws of the State of Iowa.

Signed: *Clarence J. Walton* 5/16/12
 Clarence J. Walton, L.S.
 My Registration Renewal Date is December 31, 2013
 Iowa License Number 11310
 Pages or sheets covered by this seal: 1 of 1.

- A. THERE IS NO CERTIFICATE FOR THE CORNER ON FILE WITH THE RECORDER OF THE COUNTY IN WHICH THE CORNER IS LOCATED.
- B. THE CORNER MONUMENT HAS BEEN REPLACED OR MODIFIED.
- C. THE SURVEYOR IN RESPONSIBLE CHARGE OF THE LAND SURVEYING ACCEPTS A CORNER POSITION THAT DIFFERS FROM THAT SHOWN IN THE PUBLIC RECORDS OF THE COUNTY IN WHICH THE CORNER IS LOCATED.
- D. THE REFERENCE TIES REFERRED TO IN AN EXISTING PUBLIC RECORD NO LONGER EXIST.
- E. THIS CERTIFICATE FILED TO CORRECT PREVIOUS CERTIFICATE.

CORNERS TO BE INDEXED

CORNER	SECTION	TOWNSHIP	RANGE
NE CORNER SE 1/4 NE 1/4	23	86N	2W
SE CORNER NE 1/4 NE 1/4	23	86N	2W
SW CORNER NW 1/4 NW 1/4	24	86N	2W
NW CORNER SW 1/4 NW 1/4	24	86N	2W

JONES COUNTY ENGINEER'S OFFICE



19501 HWY. 64, ANAMOSA, IOWA 52205
 (319) 462-3785