

Jones County Marie Krutzfield Recorder
 Fee Book 2012 1408
 05/17/2012 @1036AM # Pages 2
 ZSC SEC COR CERT
 Total Fees: \$0.00

COPY

PREPARED BY
 CLARENCE J. WALTON, JONES COUNTY ENGINEER'S OFFICE, 19501 HWY. 64, ANAMOSA, IOWA, 52205 (319) 462-3785

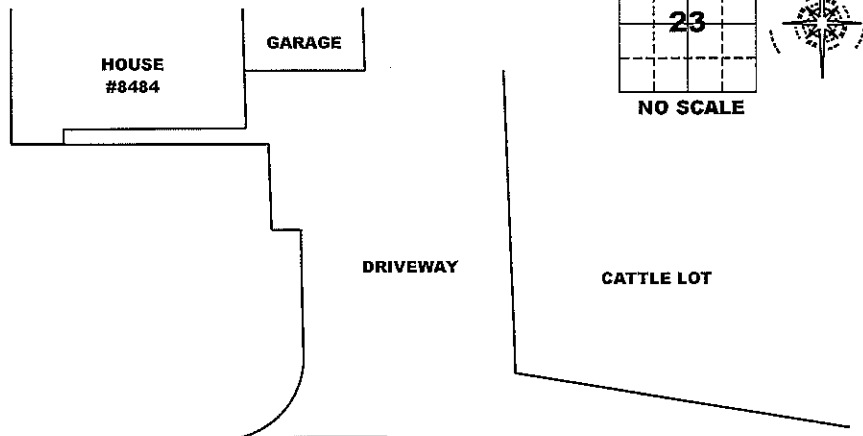
**UNITED STATES PUBLIC LAND
 SURVEY CORNER CERTIFICATE**
 LAND SURVEY MONUMENTS SITUATED IN SECTION 23, TOWNSHIP 86 NORTH,
 RANGE 2 WEST OF THE 5TH PRINCIPAL MERIDIAN, JONES COUNTY, IOWA.

STATE PLANE COORDINATE
 NAD 83 IOWA NORTH
 N 3564721.37
 E 5586319.92

CORNER SECTION TOWNSHIP RANGE
 N 1/4 CORNER 23 T86N R2W



- NOTES:
- 1) THE STATE PLANE COORDINATES AS SHOWN ARE FOR CONVENIENCE ONLY. THE TIES AS SHOWN SHOULD BE USED TO REPLACE THE CORNER, IF DESTROYED.
 - 2) COORDINATES AS SHOWN ARE GRID COORDINATES AND BASED ON JONES COUNTY G.P.S. CONTROL NETWORK WHICH IN TURN IS BASED ON NAD 83 IOWA NORTH DATUM.
 - 3) ALL MEASUREMENTS ARE IN FEET AND DECIMALS THEREOF.
 - 4) * GRID DISTANCE, BASED ON JONES COUNTY G.P.S. CONTROL NETWORK.



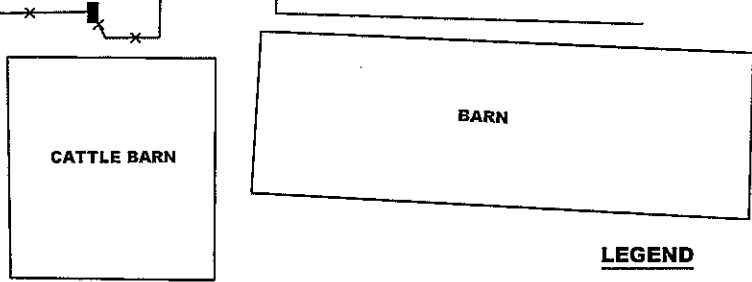
RICHLAND ROAD

N 1/4 CORNER SECTION 23-T86N-R2W
 SET 5/8" X 24" REBAR WITH OPC #11310
 2" BELOW PRESENT EXISTING GROUND SURFACE

"SURVEY MARKER" SIGN



SURVEY DISC



- LEGEND**
- OPC ORANGE PLASTIC CAP
 - () PREVIOUSLY RECORDED AS
 - ⌞ STEEL FENCE POST W/ "SURVEY MARKER" SIGN

PAGE 1 of 2

PREVIOUSLY RECORDED IN N/A
 MONUMENT DESCRIPTION AND HOW ESTABLISHED SET 5/8" X 24" REBAR WITH ORANGE PLASTIC CAP #11310 2" BELOW PRESENT EXISTING GROUND SURFACE ON THE NORTH LINE OF THE NW 1/4 NW 1/4 OF SECTION 23-T86N-R2W EXTENDED TO A POINT EQUIDISTANT FROM THE NW CORNER OF SAID SECTION 23 AND FROM THE NE CORNER OF SAID SECTION 23. NO ROAD RECORD MENTIONS THE RELATIONSHIP OF RICHLAND ROAD TO THE NORTH LINE OF SAID SECTION 23. NONE-THE-LESS, WE DUG EXTENSIVELY IN THE ROAD LOOKING FOR ANY SIGN OF A CORNER. NOTHING WAS FOUND. WE WERE RETICENT ABOUT DIGGING IN THE OF THE SET REBAR BECAUSE OF POSSIBLE WATER LINES, GAS LINES, ETC.

FIELD BOOK 341, PAGE 60 DATE OF SURVEY: 4/24/12



I hereby certify that this land surveying document and the related survey work was performed by me or under my direct personal supervision and that I am a duly registered Land Surveyor under the laws of the State of Iowa.
 Signed: *Clarence J. Walton* 5/16/12
 Clarence J. Walton, L.S.
 My Registration Renewal Date is December 31, 2013
 Iowa License Number 11310
 Pages or sheets covered by this seal: 1 of 2.

- A. THERE IS NO CERTIFICATE FOR THE CORNER ON FILE WITH THE RECORDER OF THE COUNTY IN WHICH THE CORNER IS LOCATED.
- B. THE CORNER MONUMENT HAS BEEN REPLACED OR MODIFIED.
- C. THE SURVEYOR IN RESPONSIBLE CHARGE OF THE LAND SURVEYING ACCEPTS A CORNER POSITION THAT DIFFERS FROM THAT SHOWN IN THE PUBLIC RECORDS OF THE COUNTY IN WHICH THE CORNER IS LOCATED.
- D. THE REFERENCE TIES REFERRED TO IN AN EXISTING PUBLIC RECORD NO LONGER EXIST.
- E. THIS CERTIFICATE FILED TO CORRECT PREVIOUS CERTIFICATE.

CORNERS TO BE INDEXED

CORNER	SECTION	TOWNSHIP	RANGE
NE CORNER	23	86N	2W
SE CORNER	14	86N	2W
SW CORNER	13	86N	2W
NW CORNER	24	86N	2W

JONES COUNTY ENGINEER'S OFFICE



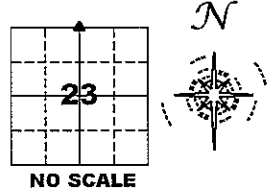
19501 HWY. 64, ANAMOSA, IOWA 52205
 (319) 462-3785

UNITED STATES PUBLIC LAND SURVEY CORNER CERTIFICATE

**LAND SURVEY MONUMENTS SITUATED IN SECTION 23, TOWNSHIP 86 NORTH,
 RANGE 2 WEST OF THE 5TH PRINCIPAL MERIDIAN, JONES COUNTY, IOWA.**

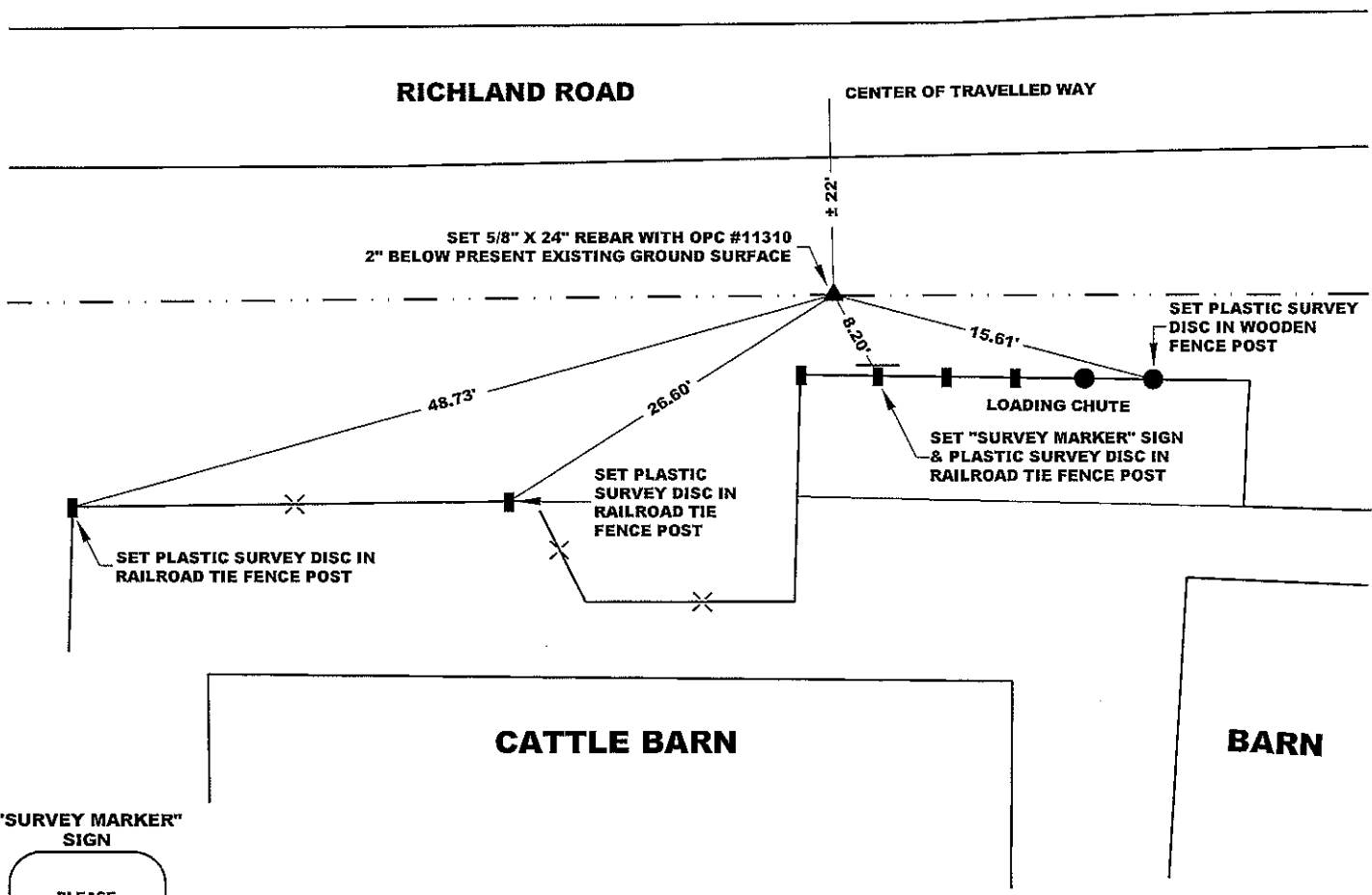
STATE PLANE COORDINATE
 NAD 83 IOWA NORTH
 N 3564721.37
 E 5586319.92

CORNER SECTION TOWNSHIP RANGE
 N 1/4 CORNER 23 T86N R2W

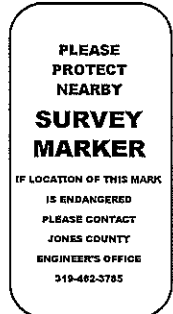


NOTES:

- 1) THE STATE PLANE COORDINATES AS SHOWN ARE FOR CONVENIENCE ONLY. THE TIES AS SHOWN SHOULD BE USED TO REPLACE THE CORNER, IF DESTROYED.
- 2) COORDINATES AS SHOWN ARE GRID COORDINATES AND BASED ON JONES COUNTY G.P.S. CONTROL NETWORK WHICH IN TURN IS BASED ON NAD 83 IOWA NORTH DATUM.
- 3) ALL MEASUREMENTS ARE IN FEET AND DECIMALS THEREOF.
- 4) * GRID DISTANCE, BASED ON JONES COUNTY G.P.S. CONTROL NETWORK.



"SURVEY MARKER" SIGN



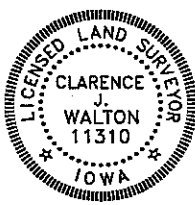
SURVEY DISC



LEGEND

- OPC ORANGE PLASTIC CAP
- () PREVIOUSLY RECORDED AS
- ⌋ STEEL FENCE POST W/ "SURVEY MARKER" SIGN

PAGE 2 of 2



I hereby certify that this land surveying document and the related survey work was performed by me or under my direct personal supervision and that I am a duly registered Land Surveyor under the laws of the State of Iowa.
 Signed: *Clarence J. Walton* 5/16/12
 Clarence J. Walton, L.S.
 My Registration Renewal Date is December 31, 2013
 Iowa License Number 11310
 Pages or sheets covered by this seal: 2 of 2.

- A. THERE IS NO CERTIFICATE FOR THE CORNER ON FILE WITH THE RECORDER OF THE COUNTY IN WHICH THE CORNER IS LOCATED.
- B. THE CORNER MONUMENT HAS BEEN REPLACED OR MODIFIED.
- C. THE SURVEYOR IN RESPONSIBLE CHARGE OF THE LAND SURVEYING ACCEPTS A CORNER POSITION THAT DIFFERS FROM THAT SHOWN IN THE PUBLIC RECORDS OF THE COUNTY IN WHICH THE CORNER IS LOCATED.
- D. THE REFERENCE TIES REFERRED TO IN AN EXISTING PUBLIC RECORD NO LONGER EXIST.
- E. THIS CERTIFICATE FILED TO CORRECT PREVIOUS CERTIFICATE.

CORNERS TO BE INDEXED

CORNER	SECTION	TOWNSHIP	RANGE
NE CORNER	23	86N	2W
SE CORNER	14	86N	2W
SW CORNER	13	86N	2W
NW CORNER	24	86N	2W

JONES COUNTY ENGINEER'S OFFICE



19501 HWY. 64, ANAMOSA, IOWA 52205
 (319) 462-3785