

Jones County Marie Krutzfield Recorder
 Fee Book 2012 1409
 05/17/2012 @1038AM # Pages 1
 ZSC SEC COR CERT
 Total Fees: \$0.00

COPY

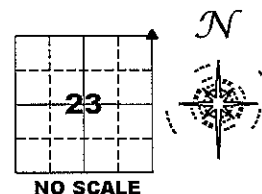
PREPARED BY
 CLARENCE J. WALTON, JONES COUNTY ENGINEER'S OFFICE, 19501 HWY. 64, ANAMOSA, IOWA, 52205 (319) 462-3785

UNITED STATES PUBLIC LAND SURVEY CORNER CERTIFICATE

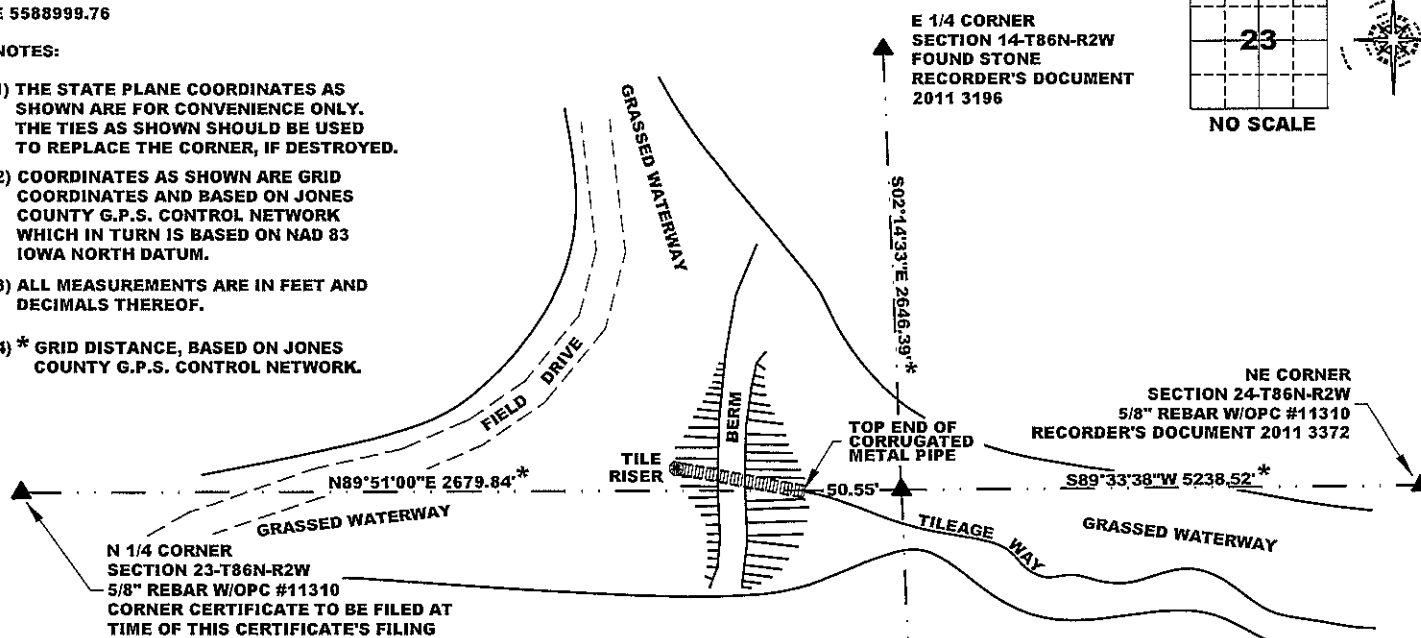
LAND SURVEY MONUMENTS SITUATED IN SECTION 23, TOWNSHIP 86 NORTH, RANGE 2 WEST OF THE 5TH PRINCIPAL MERIDIAN, JONES COUNTY, IOWA.

STATE PLANE COORDINATE
 NAD 83 IOWA NORTH
 N 3564728.34
 E 5588999.76

CORNER SECTION TOWNSHIP RANGE
 NE CORNER 23 T86N R2W



- NOTES:
- 1) THE STATE PLANE COORDINATES AS SHOWN ARE FOR CONVENIENCE ONLY. THE TIES AS SHOWN SHOULD BE USED TO REPLACE THE CORNER, IF DESTROYED.
 - 2) COORDINATES AS SHOWN ARE GRID COORDINATES AND BASED ON JONES COUNTY G.P.S. CONTROL NETWORK WHICH IN TURN IS BASED ON NAD 83 IOWA NORTH DATUM.
 - 3) ALL MEASUREMENTS ARE IN FEET AND DECIMALS THEREOF.
 - 4) * GRID DISTANCE, BASED ON JONES COUNTY G.P.S. CONTROL NETWORK.



"SURVEY MARKER" SIGN



SURVEY DISC



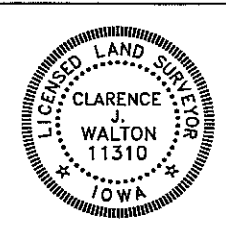
NE CORNER
 SE 1/4 NE 1/4
 SECTION 23-T86N-R2W
 5/8" REBAR W/OPC #11310
 CORNER CERTIFICATE TO BE FILED AT
 TIME OF THIS CERTIFICATE'S FILING

LEGEND

- OPC ORANGE PLASTIC CAP
- YPC YELLOW PLASTIC CAP
- () PREVIOUSLY RECORDED AS
- STEEL FENCE POST W/ "SURVEY MARKER" SIGN

PREVIOUSLY RECORDED IN N/A
PAGE 1 of 1
 MONUMENT DESCRIPTION AND HOW ESTABLISHED SET 5/8" X 24" REBAR WITH ORANGE PLASTIC CAP # 11310 FLUSH WITH PRESENT EXISTING GROUND SURFACE ON LINE AND AT PROPORTIONATE DISTANCE BETWEEN STONE AT THE E 1/4 CORNER OF SECTION 14-T86N-R2W AND A 5/8" REBAR W/OPC #11310 SET BY AN OLD FENCE CORNER AT THE SE 1/4 NE 1/4 OF SAID SECTION 23. FENCES ARE SCARCE AS HEN'S TEETH TO THE WEST AND TO THE EAST AND I AM OF THE OPINION THAT THIS IS A MORE SATISFACTORY SOLUTION FOR SETTING THIS CORNER AS IT PAYS HEED TO WHAT EVIDENCE THERE IS AND WHAT IT INDICATES THAN DOUBLE PROPORTIONING IN FROM A MILE WEST, A MILE FROM THE EAST, 3 MILES FROM THE SOUTH, AND 3/4 OF A MILE FROM THE NORTH.

FIELD BOOK 341, PAGE 60 DATE OF SURVEY: 4/24/12



I hereby certify that this land surveying document and the related survey work was performed by me or under my direct personal supervision and that I am a duly registered Land Surveyor under the laws of the State of Iowa.
 Signed: *Clarence J. Walton* 5/16/12
 Clarence J. Walton, L.S.
 My Registration Renewal Date is December 31, 2013
 Iowa License Number 11310
 Pages or sheets covered by this seal: 1 of 1.

- A. THERE IS NO CERTIFICATE FOR THE CORNER ON FILE WITH THE RECORDER OF THE COUNTY IN WHICH THE CORNER IS LOCATED.
- B. THE CORNER MONUMENT HAS BEEN REPLACED OR MODIFIED.
- C. THE SURVEYOR IN RESPONSIBLE CHARGE OF THE LAND SURVEYING ACCEPTS A CORNER POSITION THAT DIFFERS FROM THAT SHOWN IN THE PUBLIC RECORDS OF THE COUNTY IN WHICH THE CORNER IS LOCATED.
- D. THE REFERENCE TIES REFERRED TO IN AN EXISTING PUBLIC RECORD NO LONGER EXIST.
- E. THIS CERTIFICATE FILED TO CORRECT PREVIOUS CERTIFICATE.

CORNER	CORNERS TO BE INDEXED		
	SECTION	TOWNSHIP	RANGE
NE CORNER	23	86N	2W
SE CORNER	14	86N	2W
SW CORNER	13	86N	2W
NW CORNER	24	86N	2W

JONES COUNTY ENGINEER'S OFFICE



19501 HWY. 64, ANAMOSA, IOWA 52205
 (319) 462-3785