

COPY

Jones County Marie Krutzfield Recorder
Fee Book 2012 1465
05/22/2012 @0914AM # Pages 1
ZSC SEC COR CERT
Total Fees: \$7.00

PREPARED BY: MICHAEL J. WEBER, WEBER SURVEYING, LLC, 26789 46TH AVE, BERNARD, IA 52032 (563) 879-4173

UNITED STATES PUBLIC LAND SURVEY CORNER CERTIFICATE OF

LAND SURVEY MONUMENTS SITUATED IN SECTION 24, TOWNSHIP 86 NORTH, RANGE 2 WEST
OF THE FIFTH PRINCIPAL MERIDIAN, JONES COUNTY, IOWA.
PREVIOUSLY RECORDED NONE UNLESS OTHERWISE NOTED
(book, page, document number, etc.)

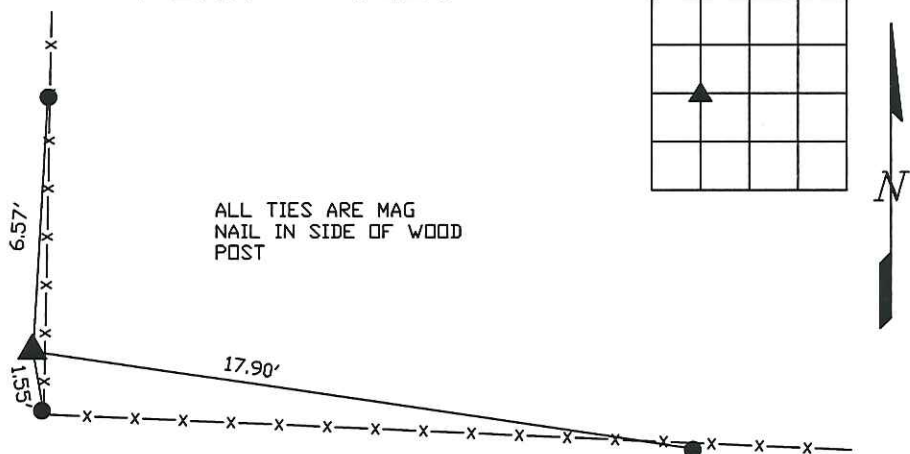
(Show reason for preparing this certificate, the evidence and detailed procedures used in establishing the corner positions and monumentation found or placed.)

Monument Description and Remarks:

-SW COR. SE-NW, SEC. 24, T.86N. R.2W. OF THE 5TH P.M. PLACED 5/8" REROD W/ORANGE CAP NO. 15084, ESTABLISHED CORNER MIDWAY AND ONLINE BETWEEN THE CENTER AND W 1/4 CORNER OF SECTION 24

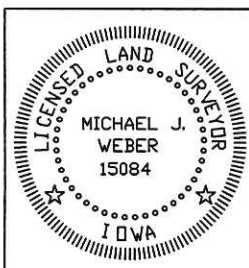
(Show a minimum of three reference ties to durable physical objects, relevant monuments and physical conditions that will enable recovery of the corner.)

PLAN - VIEW



SW COR. SE-NW, SEC. 24, T.86N.
R.2W. OF THE 5TH P.M. PLACED 5/8"
REROD W/ORANGE CAP NO. 15084

DWG. NO.
2012\TALBERT\RAY-MAN



I HEREBY CERTIFY THAT THIS LAND SURVEYING DOCUMENT WAS PREPARED AND THE RELATED SURVEY WORK WAS PERFORMED BY ME OR UNDER MY DIRECT PERSONAL SUPERVISION AND THAT I AM A DULY LICENSED LAND SURVEYOR UNDER THE LAWS OF THE STATE OF IOWA.

Michael J. Weber *May 22, 2012*
MICHAEL J. WEBER (DATE)
LICENSE NUMBER 15084

MY LICENSE RENEWAL DATE IS DECEMBER 31, 2013

SHEETS COVERED BY THIS SEAL : Sheet 1

List Corners to be Indexed
Corner Sec Twp Range
SW Cor. SE-NW 24 86N 2W