

FEEBOOK: 2006 4418 11/28/2006 10:30 AM  
 REC FEES: \$7.00 PL BK PG  
 PAGES: 1

Marie Krutzfield, Recorder  
 Jones County, Iowa

PREPARED BY: MICHAEL J. WEBER, WEBER SURVEYING, LLC, 26789 46TH AVE, BERNARD, IA 52032 (563) 879-4173

## UNITED STATES PUBLIC LAND SURVEY CORNER CERTIFICATE OF

LAND SURVEY MONUMENTS SITUATED IN SECTION 19, TOWNSHIP 86 NORTH, RANGE 1 WEST  
 OF THE FIFTH PRINCIPAL MERIDIAN, JONES COUNTY, IOWA.  
 PREVIOUSLY RECORDED NONE UNLESS OTHERWISE NOTED

(book, page, document number, etc.)

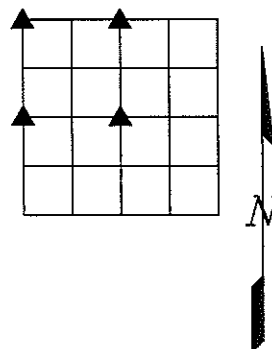
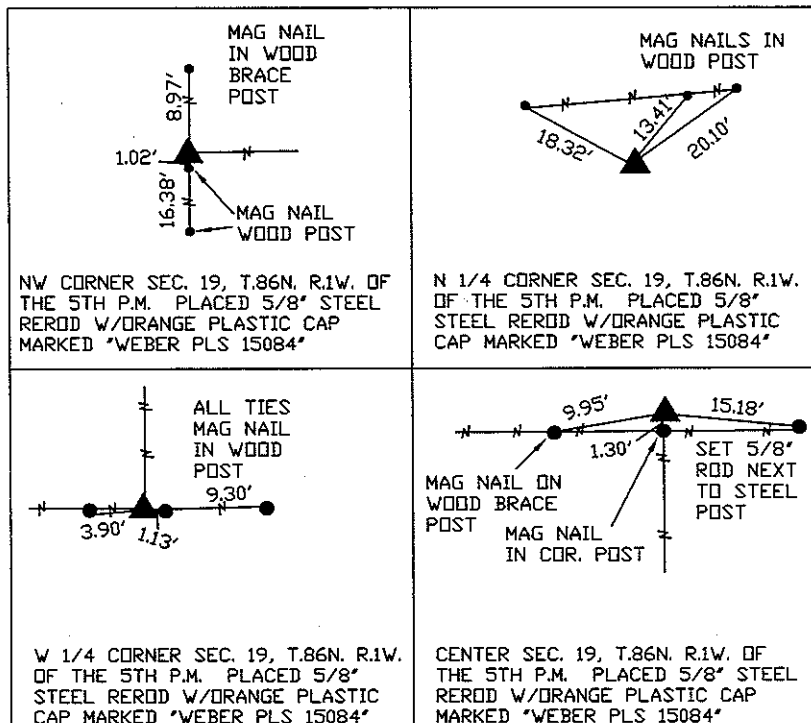
(Show reason for preparing this certificate, the evidence and detailed procedures used in establishing the corner positions and monumentation found or placed.)

**Monument Description and Remarks:**

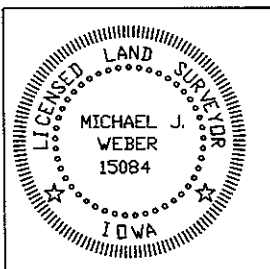
- NW CORNER SEC. 19, T.86N. R.1W. OF THE 5TH P.M. PLACED 5/8" STEEL REROD W/ORANGE PLASTIC CAP MARKED "WEBER PLS 15084" NO PIN COULD BE FOUND AS SHOWN ON PLAT OF SURVEY OF PARCEL 96-10 IN PLAT BOOK L PAGE 139 AND BOOK 392 PAGE 97 OF THE JONES COUNTY RECORDER'S OFFICE ESTABLISHED CORNER USING SAID PLAT.
- W 1/4 CORNER SEC. 19, T.86N. R.1W. OF THE 5TH P.M. PLACED 5/8" STEEL REROD W/ORANGE PLASTIC CAP MARKED "WEBER PLS 15084", ESTABLISHED CORNER USING EXISTING OCCUPATION FENCELINE CORNER
- N 1/4 CORNER SEC. 19, T.86N. R.1W. OF THE 5TH P.M. PLACED 5/8" STEEL REROD W/ORANGE PLASTIC CAP MARKED "WEBER PLS 15084", ESTABLISHED CORNER USING EXISTING OCCUPATION FENCELINE.
- CENTER SEC. 19, T.86N. R.1W. OF THE 5TH P.M. PLACED 5/8" STEEL REROD W/ORANGE PLASTIC CAP MARKED "WEBER PLS 15084" ESTABLISHED CORNER USING EXISTING OCCUPATION FENCELINE CORNER

(Show a minimum of three reference ties to durable physical objects, relevant monuments and physical conditions that will enable recovery of the corner.)

### PLAN - VIEW



DWG. NO. MAN-JOE



I HEREBY CERTIFY THAT THIS LAND SURVEYING DOCUMENT WAS PREPARED AND THE RELATED SURVEY WORK WAS PERFORMED BY ME OR UNDER MY DIRECT PERSONAL SUPERVISION AND THAT I AM A DULY LICENSED LAND SURVEYOR UNDER THE LAWS OF THE STATE OF IOWA.

*Michael J. Weber* November 27, 2006  
 MICHAEL J. WEBER (DATE)  
 LICENSE NUMBER 15084

MY LICENSE RENEWAL DATE IS DECEMBER 31, 2007

SHEETS COVERED BY THIS SEAL : 1

List Corners to be Indexed		
Corner	Sec	Twp Range
NW Cor.	19	86N 1W
WEST 1/4 COR.	19	86N 1W
NORTH 1/4 COR.	19	86N 1W
CENTER	19	86N 1W