

COPY

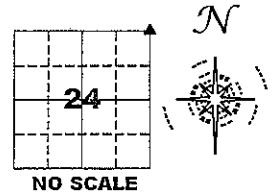
☐☐ Jones County Marie Krutzfield Recorder
 Fee Book 2011 3372
 12/30/2011 @1155AM # Pages 1
 ZSC SEC COR CERT
 Total Fees: \$0.00

PREPARED BY
 CLARENCE J. WALTON, JONES COUNTY ENGINEER'S OFFICE, 19501 HWY. 64, ANAMOSA, IOWA, 52205 (319) 462-3785

**UNITED STATES PUBLIC LAND
 SURVEY CORNER CERTIFICATE**
**LAND SURVEY MONUMENTS SITUATED IN SECTION 24, TOWNSHIP 86 NORTH,
 RANGE 2 WEST OF THE 5TH PRINCIPAL MERIDIAN, JONES COUNTY, IOWA.**

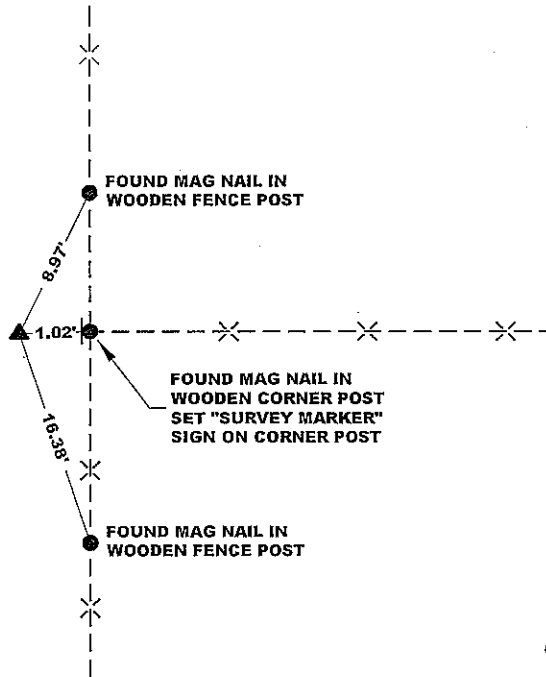
STATE PLANE COORDINATE
 NAD 83 IOWA NORTH
 N: 3564768.52
 E: 5594238.12

CORNER SECTION TOWNSHIP RANGE
 NE CORNER 24 T86N R2W

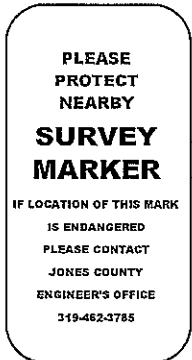


NOTES:

- 1) THE STATE PLANE COORDINATES AS SHOWN ARE FOR CONVENIENCE ONLY. THE TIES AS SHOWN SHOULD BE USED TO REPLACE THE CORNER, IF DESTROYED.
- 2) COORDINATES AS SHOWN ARE GRID COORDINATES AND BASED ON JONES COUNTY G.P.S. CONTROL NETWORK WHICH IN TURN IS BASED ON NAD 83 IOWA NORTH DATUM.
- 3) ALL MEASUREMENTS ARE IN FEET AND DECIMALS THEREOF.
- 4) * GRID DISTANCE, BASED ON JONES COUNTY G.P.S. CONTROL NETWORK.



"SURVEY MARKER" SIGN



SURVEY DISC



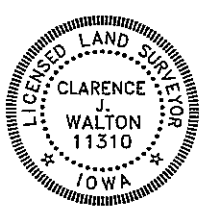
LEGEND

- OPC ORANGE PLASTIC CAP
- () RECORDED AS
- FOUND MAG NAIL IN WOODEN CORNER POST SET "SURVEY MARKER" SIGN ON CORNER POST
- FOUND MAG NAIL IN WOODEN FENCE POST

PREVIOUSLY RECORDED IN RECORDER'S DOCUMENT 2006 4418

MONUMENT DESCRIPTION AND HOW ESTABLISHED FOUND 5/8" REBAR WITH ORANGE PLASTIC CAP #15084 6" BELOW PRESENT GROUND SURFACE. PROXIMITY TO FENCE WIRE AND OTHER STEEL APPURTENANCES MAKES IT NEARLY IMPOSSIBLE TO DETECT MONUMENT. THEREFORE LOWERED FOUND REBAR AND SET 5/8" X24" REBAR WITH ORANGE PLASTIC CAP #11310 ±6" ABOVE PRESENT GROUND SURFACE DIRECTLY ATOP THE FOUND REBAR. A "SURVEY MARKER" SIGN WAS SET ON THE CORNER POST TO SERVE AS A WITNESS TO THE MONUMENTS.

FIELD BOOK 341, PAGE 71 DATE OF SURVEY: 9/13/11



I hereby certify that this land surveying document and the related survey work was performed by me or under my direct personal supervision and that I am a duly registered Land Surveyor under the laws of the State of Iowa.
 Signed: *Clarence J. Walton* 12/30/11
 Clarence J. Walton, L.S.
 My Registration Renewal Date is December 31, 2011
 Iowa License Number 11310
 Pages or sheets covered by this seal: 1 of 1.

- A. THERE IS NO CERTIFICATE FOR THE CORNER ON FILE WITH THE RECORDER OF THE COUNTY IN WHICH THE CORNER IS LOCATED.
- B. THE CORNER MONUMENT HAS BEEN REPLACED OR MODIFIED.
- C. THE SURVEYOR IN RESPONSIBLE CHARGE OF THE LAND SURVEYING ACCEPTS A CORNER POSITION THAT DIFFERS FROM THAT SHOWN IN THE PUBLIC RECORDS OF THE COUNTY IN WHICH THE CORNER IS LOCATED.
- D. THE REFERENCE TIES REFERRED TO IN AN EXISTING PUBLIC RECORD NO LONGER EXIST.
- E. EXISTING CORNER TIES UPDATED.

CORNERS TO BE INDEXED

CORNER	SECTION	TOWNSHIP	RANGE
NE	24	86N	2W
SE	13	86N	2W
SW	18	86N	1W
NE	19	86N	1W

JONES COUNTY ENGINEER'S OFFICE



19501 HWY. 64, ANAMOSA, IOWA 52205
 (319) 462-3785

FEEBOOK: 2006 4418 11/28/2006 10:30 AM
 REC FEES: \$7.00 PL BK PG
 PAGES: 1

Marie Krutzfield, Recorder
 Jones County, Iowa

PREPARED BY: MICHAEL J. WEBER, WEBER SURVEYING, LLC, 26789 46TH AVE, BERNARD, IA 52032 (563) 879-4173

UNITED STATES PUBLIC LAND SURVEY CORNER CERTIFICATE OF

LAND SURVEY MONUMENTS SITUATED IN SECTION 19, TOWNSHIP 86 NORTH, RANGE 1 WEST
 OF THE FIFTH PRINCIPAL MERIDIAN, JONES COUNTY, IOWA.
 PREVIOUSLY RECORDED NONE UNLESS OTHERWISE NOTED

(book, page, document number, etc.)

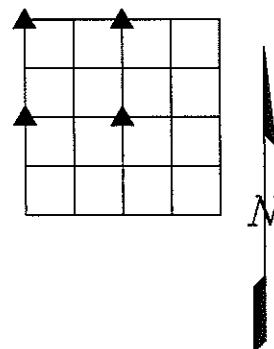
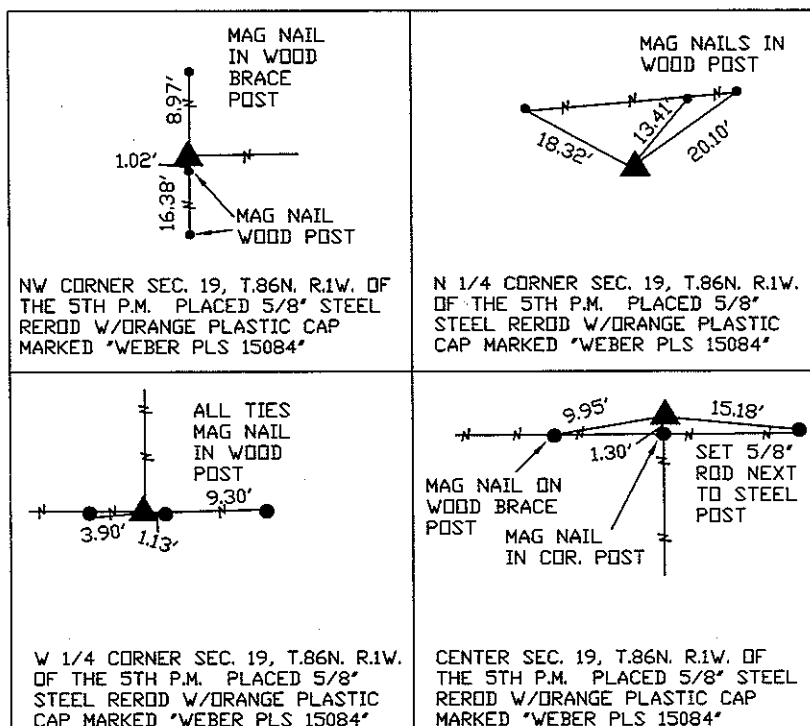
(Show reason for preparing this certificate, the evidence and detailed procedures used in establishing the corner positions and monumentation found or placed.)

Monument Description and Remarks:

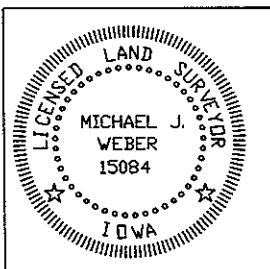
- NW CORNER SEC. 19, T.86N. R.1W. OF THE 5TH P.M. PLACED 5/8" STEEL REROD W/ORANGE PLASTIC CAP MARKED "WEBER PLS 15084" NO PIN COULD BE FOUND AS SHOWN ON PLAT OF SURVEY OF PARCEL 96-10 IN PLAT BOOK L PAGE 139 AND BOOK 392 PAGE 97 OF THE JONES COUNTY RECORDER'S OFFICE ESTABLISHED CORNER USING SAID PLAT.
- W 1/4 CORNER SEC. 19, T.86N. R.1W. OF THE 5TH P.M. PLACED 5/8" STEEL REROD W/ORANGE PLASTIC CAP MARKED "WEBER PLS 15084", ESTABLISHED CORNER USING EXISTING OCCUPATION FENCELINE CORNER
- N 1/4 CORNER SEC. 19, T.86N. R.1W. OF THE 5TH P.M. PLACED 5/8" STEEL REROD W/ORANGE PLASTIC CAP MARKED "WEBER PLS 15084", ESTABLISHED CORNER USING EXISTING OCCUPATION FENCELINE.
- CENTER SEC. 19, T.86N. R.1W. OF THE 5TH P.M. PLACED 5/8" STEEL REROD W/ORANGE PLASTIC CAP MARKED "WEBER PLS 15084" ESTABLISHED CORNER USING EXISTING OCCUPATION FENCELINE CORNER

(Show a minimum of three reference ties to durable physical objects, relevant monuments and physical conditions that will enable recovery of the corner.)

PLAN - VIEW



DWG. NO. MAN-JOE



I HEREBY CERTIFY THAT THIS LAND SURVEYING DOCUMENT WAS PREPARED AND THE RELATED SURVEY WORK WAS PERFORMED BY ME OR UNDER MY DIRECT PERSONAL SUPERVISION AND THAT I AM A DULY LICENSED LAND SURVEYOR UNDER THE LAWS OF THE STATE OF IOWA.

Michael J. Weber
 MICHAEL J. WEBER
 LICENSE NUMBER 15084
 MY LICENSE RENEWAL DATE IS DECEMBER 31, 2007

SHEETS COVERED BY THIS SEAL : 1

List Corners to be Indexed

Corner	Sec	Twp	Range
NW Cor.	19	86N	1W
WEST 1/4 COR.	19	86N	1W
NORTH 1/4 COR.	19	86N	1W
CENTER	19	86N	1W

UNITED STATES PUBLIC LAND SURVEY CORNER CERTIFICATE

OF

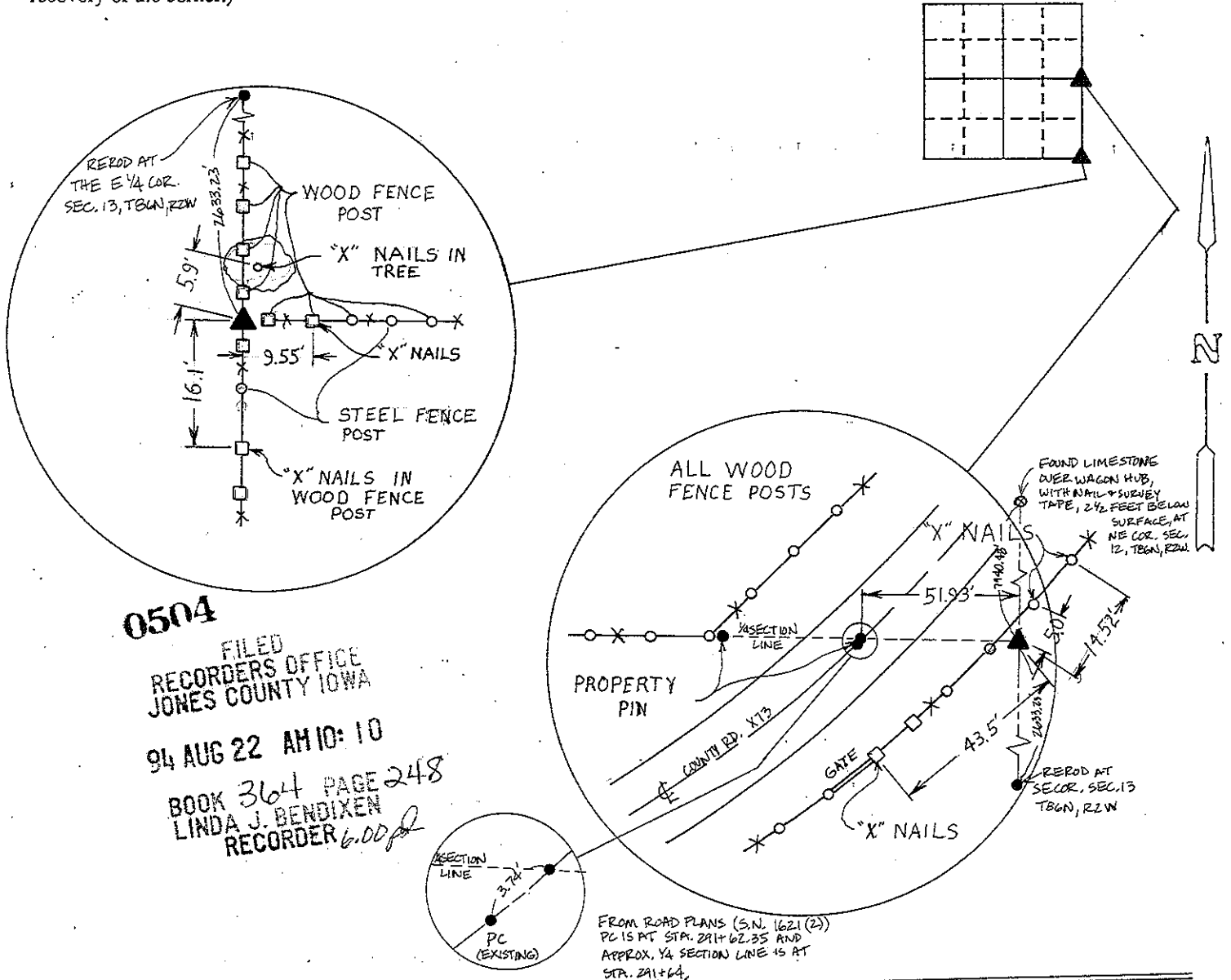
Land Survey Monuments situated in Section 13, Township 86, Range 2W, of the Fifth Principal Meridian, JONES County, Iowa. Previously recorded in Book _____, Page _____.

(Show reason for preparing this certificate, the evidence and detailed procedures used in establishing the corner positions and monumentation found or placed.)

Monument Description and Remarks: PLACED 5/8" ROD @ SE CORNER SECTION 13, T86N, R2W AND @ E 1/4 CORNER SECTION 13, T86N, R2W. BOTH w/ CAP #4016.

PLAN - VIEW

(Show a minimum of three reference ties to durable physical objects, relevant monuments and physical conditions that will enable recovery of the corner.)



0504
 FILED
 RECORDERS OFFICE
 JONES COUNTY IOWA
 94 AUG 22 AM 10:10
 BOOK 364 PAGE 248
 LINDA J. BENDIXEN
 RECORDER *b.o.d.*

FROM ROAD PLANS (S.N. 1621 (2))
 PC IS AT STA. 291+62.35 AND
 APPROX. 1/4 SECTION LINE IS AT
 STA. 291+64.

I hereby certify that the survey work was completed and this certificate was prepared by me or under my direct personal supervision and that I am a duly registered land surveyor under the laws of the state of Iowa.

John L. White
 REGISTERED LAND SURVEYOR NO. 4016

SEAL



List Corners to be Indexed

Corners	Section	Twp	Range
SE	13	86N	2W
E 1/4	13	86N	2W