

Jones County Marie Krutzfield Recorder
 Fee Book 2012 1412
 05/17/2012 @1041AM # Pages 1
 ZSC SEC COR CERT
 Total Fees: \$0.00

COPY

PREPARED BY
 CLARENCE J. WALTON, JONES COUNTY ENGINEER'S OFFICE, 19501 HWY. 64, ANAMOSA, IOWA, 52205 (319) 462-3785

UNITED STATES PUBLIC LAND SURVEY CORNER CERTIFICATE

LAND SURVEY MONUMENTS SITUATED IN SECTION 25, TOWNSHIP 86 NORTH,
 RANGE 2 WEST OF THE 5TH PRINCIPAL MERIDIAN, JONES COUNTY, IOWA.

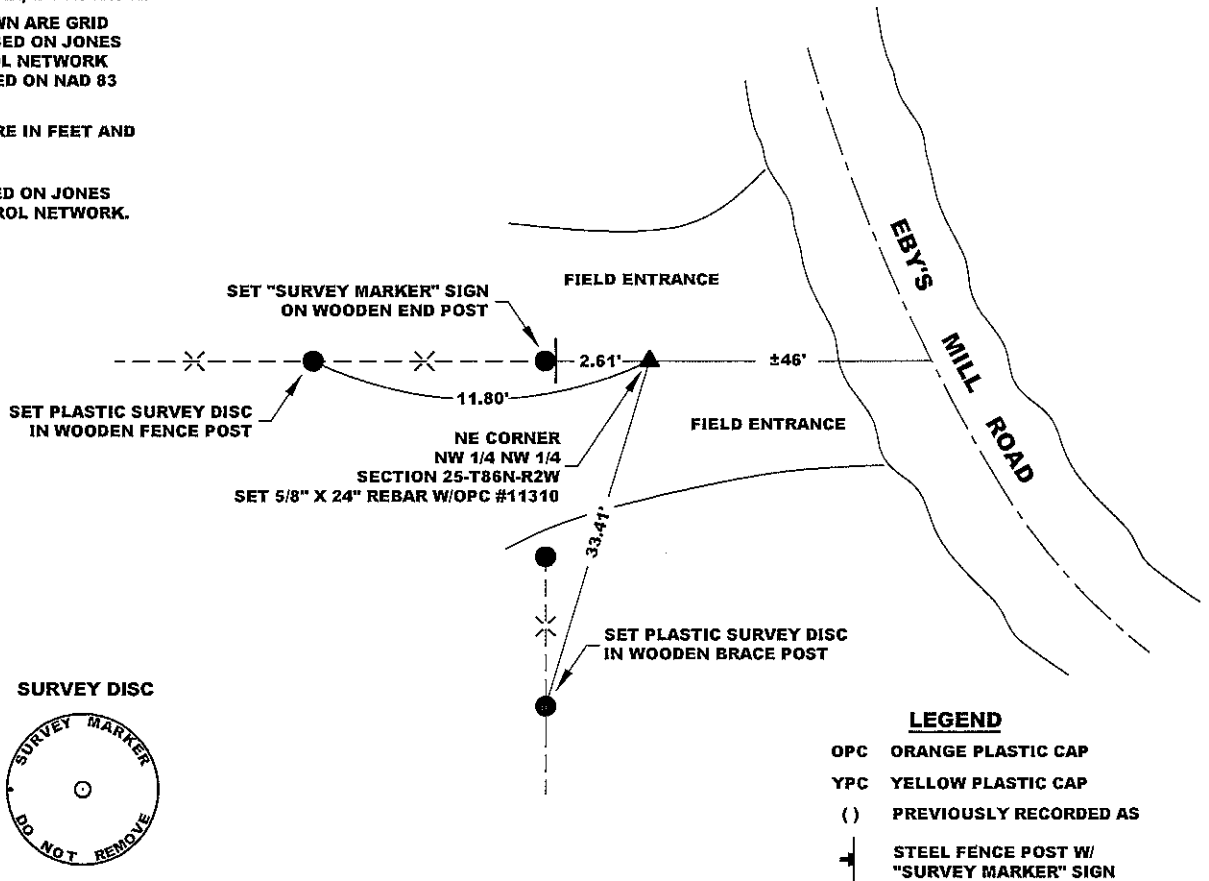
STATE PLANE COORDINATE
 NAD 83 IOWA NORTH
 N 3559561.67
 E 5590422.46

CORNER SECTION TOWNSHIP RANGE
 NE CORNER 25 T86N R2W
 NW 1/4 NW 1/4



NOTES:

- 1) THE STATE PLANE COORDINATES AS SHOWN ARE FOR CONVENIENCE ONLY. THE TIES AS SHOWN SHOULD BE USED TO REPLACE THE CORNER, IF DESTROYED.
- 2) COORDINATES AS SHOWN ARE GRID COORDINATES AND BASED ON JONES COUNTY G.P.S. CONTROL NETWORK WHICH IN TURN IS BASED ON NAD 83 IOWA NORTH DATUM.
- 3) ALL MEASUREMENTS ARE IN FEET AND DECIMALS THEREOF.
- 4) * GRID DISTANCE, BASED ON JONES COUNTY G.P.S. CONTROL NETWORK.



"SURVEY MARKER" SIGN



SURVEY DISC



LEGEND

- OPC ORANGE PLASTIC CAP
- YPC YELLOW PLASTIC CAP
- () PREVIOUSLY RECORDED AS
- STEEL FENCE POST W/ "SURVEY MARKER" SIGN

PREVIOUSLY RECORDED IN N/A
PAGE 1 of 1
 MONUMENT DESCRIPTION AND HOW ESTABLISHED SET 5/8" X 24" REBAR WITH ORANGE PLASTIC CAP # 11310 3" BELOW PRESENT EXISTING GROUND SURFACE ON LINE AND EQUIDISTANT BETWEEN THE NW CORNER OF SECTION 25-T86N-R2W AND THE N 1/4 CORNER OF SAME SAID SECTION. THIS LOCATION IS IN LINE WITH AVERAGE FENCE LINE COMING UP FROM THE SOUTH. A "SURVEY MARKER" SIGN WAS SET IN THE END POST OF A FENCE FROM THE WEST AS A WITNESS TO THIS CORNER.

FIELD BOOK 341, PAGE 58 DATE OF SURVEY: 4/25/12



I hereby certify that this land surveying document and the related survey work was performed by me or under my direct personal supervision and that I am a duly registered Land Surveyor under the laws of the State of Iowa.
 Signed: *Clarence J. Walton* 5/16/12
 Clarence J. Walton, L.S.
 My Registration Renewal Date is December 31, 2013
 Iowa License Number 11310
 Pages or sheets covered by this seal: 1 of 1.

- A. THERE IS NO CERTIFICATE FOR THE CORNER ON FILE WITH THE RECORDER OF THE COUNTY IN WHICH THE CORNER IS LOCATED.
- B. THE CORNER MONUMENT HAS BEEN REPLACED OR MODIFIED.
- C. THE SURVEYOR IN RESPONSIBLE CHARGE OF THE LAND SURVEYING ACCEPTS A CORNER POSITION THAT DIFFERS FROM THAT SHOWN IN THE PUBLIC RECORDS OF THE COUNTY IN WHICH THE CORNER IS LOCATED.
- D. THE REFERENCE TIES REFERRED TO IN AN EXISTING PUBLIC RECORD NO LONGER EXIST.
- E. THIS CERTIFICATE FILED TO CORRECT PREVIOUS CERTIFICATE.

CORNER	CORNERS TO BE INDEXED		
	SECTION	TOWNSHIP	RANGE
NE CORNER	25	86N	2W
NW 1/4 NW 1/4			
SE CORNER	24	86N	2W
SW 1/4 SW 1/4			
SW CORNER	24	86N	2W
SE 1/4 SW 1/4			
NW CORNER	25	86N	2W
NE 1/4 NW 1/4			

JONES COUNTY ENGINEER'S OFFICE

 19501 HWY. 64, ANAMOSA, IOWA 52205
 (319) 462-3785