

COPY

Jones County Marie Krutzfield Recorder
 Fee Book 2012 1414
 05/17/2012 @1044AM # Pages 1
 ZSC SEC COR CERT
 Total Fees: \$0.00

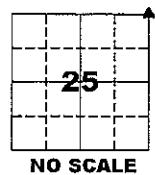
PREPARED BY
 CLARENCE J. WALTON, JONES COUNTY ENGINEER'S OFFICE, 19501 HWY. 64, ANAMOSA, IOWA, 52205 (319) 462-3785

UNITED STATES PUBLIC LAND SURVEY CORNER CERTIFICATE

LAND SURVEY MONUMENTS SITUATED IN SECTION 25, TOWNSHIP 86 NORTH,
 RANGE 2 WEST OF THE 5TH PRINCIPAL MERIDIAN, JONES COUNTY, IOWA.

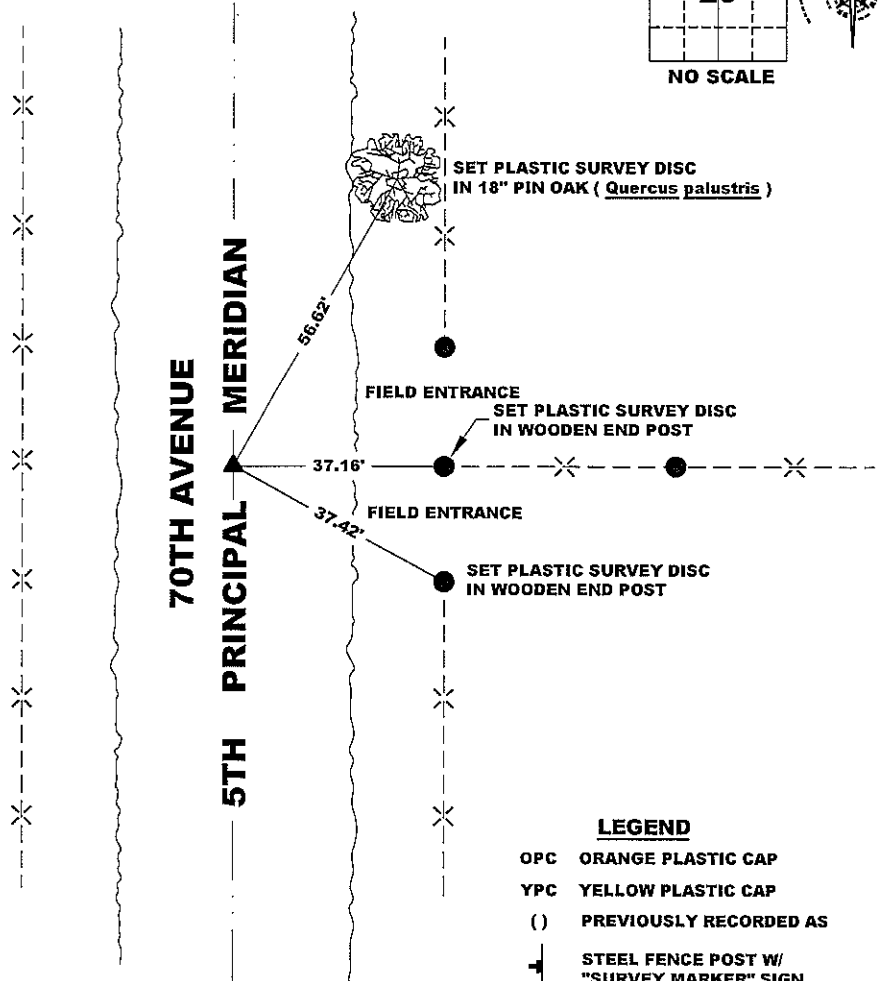
STATE PLANE COORDINATE
 NAD 83 IOWA NORTH
 N 3559476.80
 E 5594365.53

CORNER SECTION TOWNSHIP RANGE
 NE CORNER 25 T86N R2W

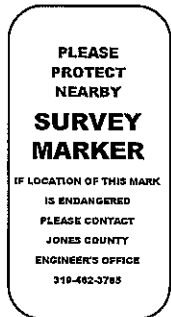


NOTES:

- 1) THE STATE PLANE COORDINATES AS SHOWN ARE FOR CONVENIENCE ONLY. THE TIES AS SHOWN SHOULD BE USED TO REPLACE THE CORNER, IF DESTROYED.
- 2) COORDINATES AS SHOWN ARE GRID COORDINATES AND BASED ON JONES COUNTY G.P.S. CONTROL NETWORK WHICH IN TURN IS BASED ON NAD 83 IOWA NORTH DATUM.
- 3) ALL MEASUREMENTS ARE IN FEET AND DECIMALS THEREOF.
- 4) * GRID DISTANCE, BASED ON JONES COUNTY G.P.S. CONTROL NETWORK.



"SURVEY MARKER" SIGN



SURVEY DISC



LEGEND

- OPC ORANGE PLASTIC CAP
- YPC YELLOW PLASTIC CAP
- () PREVIOUSLY RECORDED AS
- STEEL FENCE POST W/ "SURVEY MARKER" SIGN

PAGE 1 of 1

PREVIOUSLY RECORDED IN N/A
 MONUMENT DESCRIPTION AND HOW ESTABLISHED SET 5/8" X 24" REBAR WITH ORANGE PLASTIC CAP # 11310 4" BELOW PRESENT EXISTING ROAD SURFACE IN LINE WITH OLDER FENCE LINE TO EAST WHICH HAS BEEN IN PLACE SINCE THE 1940'S. THE EAST WEST POSITION WAS ESTABLISHED BY FINDING OLD CENTERLINE POINTS SET ACCORDING TO COUNTY ROAD RECORDS WHICH SAYS THE ROAD WAS ORIGINALLY LAID OUT CENTERED ON THE EAST LINE OF SECTION 25. THE 5TH P.M. WAS RUN FROM THE SE CORNER OF SECTION 36-T86N-R2W TO THE NE CORNER OF SECTION 1-T86N-R2W, TYING DOWN ALL CORNERS OF RECORD TO OBTAIN AN AVERAGE BEARING, WHICH WE COMPARED TO THAT ALONG 70TH AVENUE, WHICH COMPARED FAVORABLY WITH EACH OTHER.

FIELD BOOK 341, PAGE 57 DATE OF SURVEY: 4/25/12



I hereby certify that this land surveying document and the related survey work was performed by me or under my direct personal supervision and that I am a duly registered Land Surveyor under the laws of the State of Iowa.
 Signed: *Clarence J. Walton* 5/17/12

Clarence J. Walton, L.S.
 My Registration Renewal Date is December 31, 2013
 Iowa License Number 11310
 Pages or sheets covered by this seal: 1 of 1.

- A. THERE IS NO CERTIFICATE FOR THE CORNER ON FILE WITH THE RECORDER OF THE COUNTY IN WHICH THE CORNER IS LOCATED.
- B. THE CORNER MONUMENT HAS BEEN REPLACED OR MODIFIED.
- C. THE SURVEYOR IN RESPONSIBLE CHARGE OF THE LAND SURVEYING ACCEPTS A CORNER POSITION THAT DIFFERS FROM THAT SHOWN IN THE PUBLIC RECORDS OF THE COUNTY IN WHICH THE CORNER IS LOCATED.
- D. THE REFERENCE TIES REFERRED TO IN AN EXISTING PUBLIC RECORD NO LONGER EXIST.
- E. THIS CERTIFICATE FILED TO CORRECT PREVIOUS CERTIFICATE.

CORNER	SECTION	TOWNSHIP	RANGE
NE CORNER	25	86N	2W
SE CORNER	24	86N	2W
SW CORNER	19	86N	1W
NW CORNER	30	86N	1W

JONES COUNTY ENGINEER'S OFFICE



19501 HWY. 64, ANAMOSA, IOWA 52205
 (319) 462-3785