

Jones County Marie Krutzfield Recorder
 Fee Book 2012 1416
 05/17/2012 @1046AM # Pages 1
 ZSC SEC COR CERT
 Total Fees: \$0.00

COPY

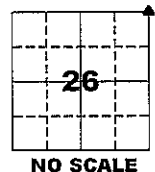
PREPARED BY
 CLARENCE J. WALTON, JONES COUNTY ENGINEER'S OFFICE, 19501 HWY. 64, ANAMOSA, IOWA, 52205 (319) 462-3785

UNITED STATES PUBLIC LAND SURVEY CORNER CERTIFICATE

LAND SURVEY MONUMENTS SITUATED IN SECTION 26, TOWNSHIP 86 NORTH, RANGE 2 WEST OF THE 5TH PRINCIPAL MERIDIAN, JONES COUNTY, IOWA.

STATE PLANE COORDINATE
 NAD 83 IOWA NORTH
 N 3559542.74
 E 5589103.02

CORNER SECTION TOWNSHIP RANGE
 NE CORNER 26 T86N R2W



NOTES:

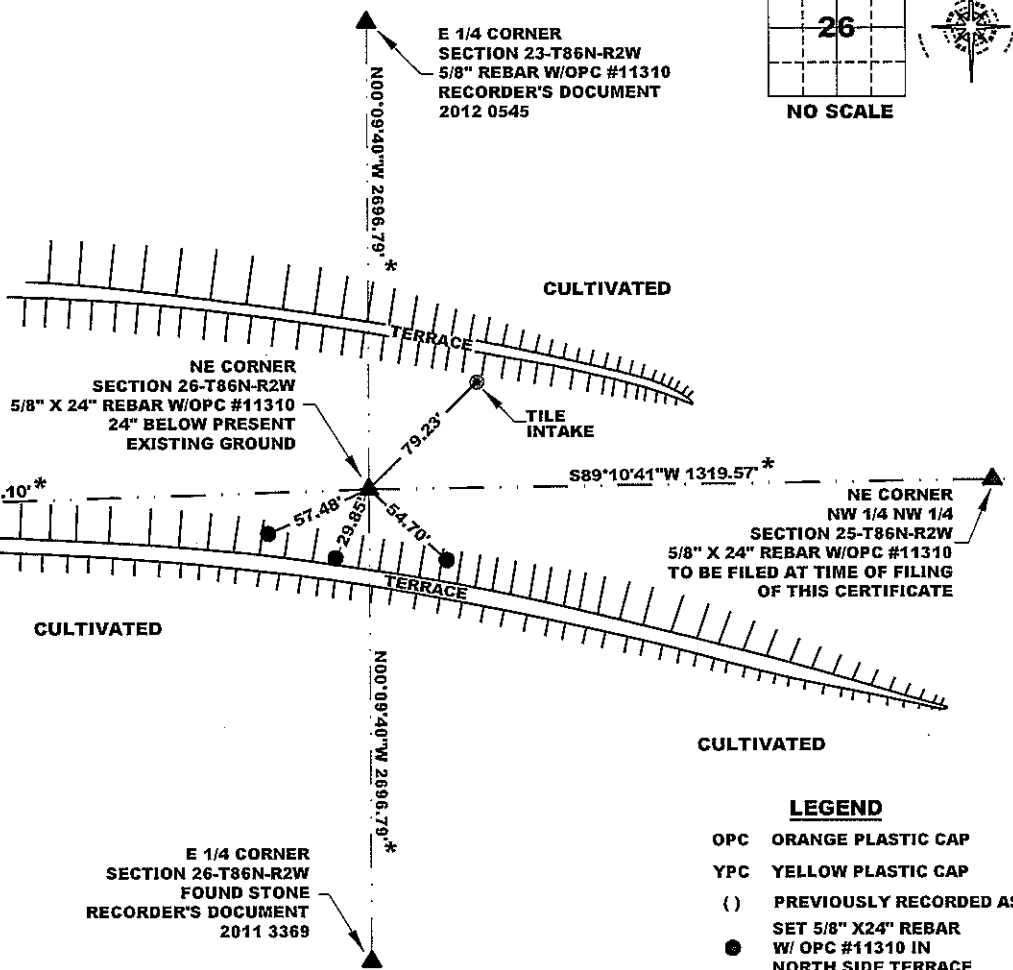
- 1) THE STATE PLANE COORDINATES AS SHOWN ARE FOR CONVENIENCE ONLY. THE TIES AS SHOWN SHOULD BE USED TO REPLACE THE CORNER, IF DESTROYED.
- 2) COORDINATES AS SHOWN ARE GRID COORDINATES AND BASED ON JONES COUNTY G.P.S. CONTROL NETWORK WHICH IN TURN IS BASED ON NAD 83 IOWA NORTH DATUM.
- 3) ALL MEASUREMENTS ARE IN FEET AND DECIMALS THEREOF.
- 4) * GRID DISTANCE, BASED ON JONES COUNTY G.P.S. CONTROL NETWORK.

N 1/4 CORNER SECTION 26-T86N-R2W
 FOUND STONE
 RECORDER'S DOCUMENT
 2011 3197

"SURVEY MARKER" SIGN



SURVEY DISC



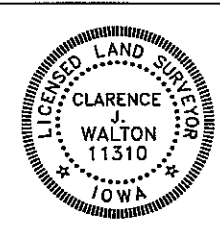
- LEGEND
- OPC ORANGE PLASTIC CAP
 - YPC YELLOW PLASTIC CAP
 - () PREVIOUSLY RECORDED AS SET 5/8" X 24" REBAR W/ OPC #11310 IN NORTH SIDE TERRACE

PREVIOUSLY RECORDED IN N/A

PAGE 1 of 1

MONUMENT DESCRIPTION AND HOW ESTABLISHED SET 5/8" X 24" REBAR WITH ORANGE PLASTIC CAP # 11310 24" BELOW PRESENT EXISTING GROUND SURFACE ALONG WITH A "PERMANENT" MAGNET IN CULTIVATED FIELD. CORNER WAS SET BY INTERSECTING LINE FROM STONE AT THE E 1/4 CORNER OF SECTION 26-T86N-R2W THROUGH FENCE SPLIT AT APPROXIMATE NE CORNER OF THE SE 1/4 NE 1/4 SAID SECTION 26 WITH THE EXTENSION OF A FENCE LINE FROM THE N 1/4 CORNER OF SAID SECTION 26 TO A VERY OLD FENCE CORNER AT THE APPROXIMATE NW CORNER OF THE NE 1/4 NE 1/4 OF SAID SECTION 26 EXTENDED E-LY, AND ALSO WITH INTERSECTION OF SAID LINE FROM STONE AT SAID E 1/4 CORNER WITH A FENCE LINE TO THE EAST EXTENDED W-LY. THESE EAST WEST EXTENDED FENCE LINES MEET VERY CLOSELY WITH THE EAST LINE OF THE NE 1/4 OF SAID SECTION 26 AS MONUMENTED. NOTE ALSO THE BEARING SAID EAST LINE WITH THAT OF THE EAST LINE OF THE SE 1/4 OF SECTION 23-T86N-R2W.

FIELD BOOK 341, PAGE 59 DATE OF SURVEY: 4/24/12



I hereby certify that this land surveying document and the related survey work was performed by me or under my direct personal supervision and that I am a duly registered Land Surveyor under the laws of the State of Iowa.
 Signed: *Clarence J. Walton* 5/16/12
 Clarence J. Walton, L.S.
 My Registration Renewal Date is December 31, 2013
 Iowa License Number 11310
 Pages or sheets covered by this seal: 1 of 1.

- A. THERE IS NO CERTIFICATE FOR THE CORNER ON FILE WITH THE RECORDER OF THE COUNTY IN WHICH THE CORNER IS LOCATED.
- B. THE CORNER MONUMENT HAS BEEN REPLACED OR MODIFIED.
- C. THE SURVEYOR IN RESPONSIBLE CHARGE OF THE LAND SURVEYING ACCEPTS A CORNER POSITION THAT DIFFERS FROM THAT SHOWN IN THE PUBLIC RECORDS OF THE COUNTY IN WHICH THE CORNER IS LOCATED.
- D. THE REFERENCE TIES REFERRED TO IN AN EXISTING PUBLIC RECORD NO LONGER EXIST.
- E. THIS CERTIFICATE FILED TO CORRECT PREVIOUS CERTIFICATE.

CORNER	SECTION	TOWNSHIP	RANGE
NE CORNER	26	86N	2W
SE CORNER	23	86N	2W
SW CORNER	24	86N	2W
NW CORNER	25	86N	2W

JONES COUNTY ENGINEER'S OFFICE

19501 HWY. 64, ANAMOSA, IOWA 52205
 (319) 462-3785